

# BLÜCHER® BALL VALVE

IN HIGH-QUALITY STAINLESS STEEL  
FOR **EASY** CONNECTION



**NEW**

# BLÜCHER® BALL VALVE

## IN HIGH-QUALITY STAINLESS STEEL FOR EASY CONNECTION

The ball valves give operational efficiency by allowing you to selectively isolate sections of your piping system aboard any vessel and are suitable for both vacuum- and gravity systems.

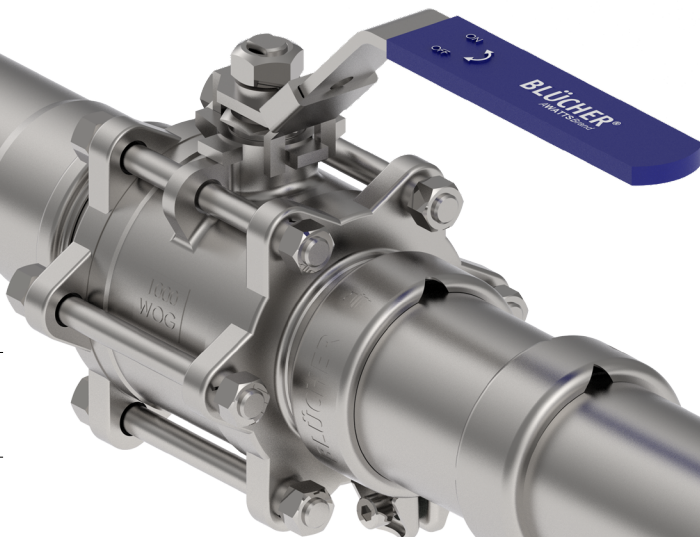
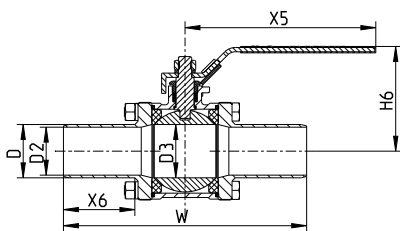
They are designed for simplicity, ensuring quick and straightforward installation. Ideal for use with both black- and grey water systems, as well as food waste systems, these valves can be connected seamlessly with existing BLÜCHER sockets in your piping system, eliminating the need for additional adapters or flanges.

These ball valves are available in different sizes and have now been added to our stainless steel marine drainage standard product range.

**With these ball valves, you get ONE complete system from ONE trusted supplier.**

### Why Choose BLÜCHER® Ball Valves?

- Many applications: black water, grey water, food waste systems etc.
- Suitable for both vacuum- and gravity systems
- Material quality: 316/CF8M
- Fast and simple installation due to push-fit socket and spigot end jointing
- Easy connection to the BLÜCHER socket in the piping system - no need for additional adapters or flanges.
- 3-piece ball valve - easy to disassemble for maintenance when used in conjunction with a type 842 slip coupling.
- Available in the dimensions from DN40 – DN100 (Ø40 – Ø110 mm)
- Operational temperature: -25°C to +180°C
- Long product-life expectancy
- Hygienic material
- Possible to lock the valve for secure operations
- ONE system from ONE supplier



Type no.	D	D2	D3	W	X5	X6	H6	KG
876.040.040 S	Ø40	Ø37	Ø40	197	185	56	90	2,49
876.050.050 S	Ø50	Ø45	Ø50	228	185	67	98	3,69
876.065.075 S	Ø75	Ø69	Ø65	250	260	66	138	7,18
876.080.075 S	Ø75	Ø69	Ø80	268	252	66	163	11,19
876.100.110 S	Ø110	Ø100	Ø100	308	295	75	116	19,25

[www.blucher.com](http://www.blucher.com)