

Customized Drainage Solution in a Special Floor Construction for a Modern Brewery

Case story: Channels, BA high-capacity drains, and a smart glass separator for a larger brewery in The Czech Republic delivered by BLÜCHER in close collaboration with Vibrofloors, Prague

What the client needed

The brewery had successfully worked with BLÜCHER and Vibrofloors before, but this time they needed a different solution where the new floor included a customized drainage solution. The channels should be placed around the bottling machines at the new filling line and simultaneously be part of a high-flow drainage area. Another essential premise for the unique solution was to make it fit a particular floor construction, including a deep membrane layer.

Solution

Channels, BA industrial high-capacity drains, and the glass catcher have been installed in a way so that different glass catchers are placed at one side of the channel and the BA drain at the other side of the channel. The BA type of high-capacity drains is designed to remove process and cleaning water from tanks safely and hygienically. As in this case, BA high-capacity drains can also be used as outlet drains for channel systems. The drainage capacity for these drains is very high.

In this new area, pieces of broken glass are falling from the filler, so regular filter baskets get clogged up quickly. To prevent this, the glass catchers are very deep to absorb large amounts of glass.

All outlets have a large horizontal lower part with a sheet membrane flange to secure waterproofing.

Vibrofloor and BLÜCHER engineers developed this pentagon shape channel where each connection is customized differently according to its capacity and requirement for the glass collection.

Result (ROI)

Within a short time from the first request to installation, the brewery got exactly the floor and drainage solution they wanted, thanks to the eminent collaboration between BLÜCHER Customer Center as a drainage specialist and Vibrofloors as a flooring specialist. An experienced product design engineer from BLÜCHER made visualized detailed technical drawings to smoothen the whole process.

Facts:

- Customer:** Pilsner Urquell
- Location:** Pilsen, Czech Republic
- Industry:** Brewery
- Category:** Drainage (land)
- Products Installed:**

BLÜCHER® Channels,
BA High-Capacity Drains
& Glass Separator



"We gave the customer the exact solution they wanted thanks to the eminent collaboration between BLÜCHER and Vibrofloors. It was a pleasure to see how our technical engineer, and a product design engineer, and intern sales from BLÜCHER handled this project".

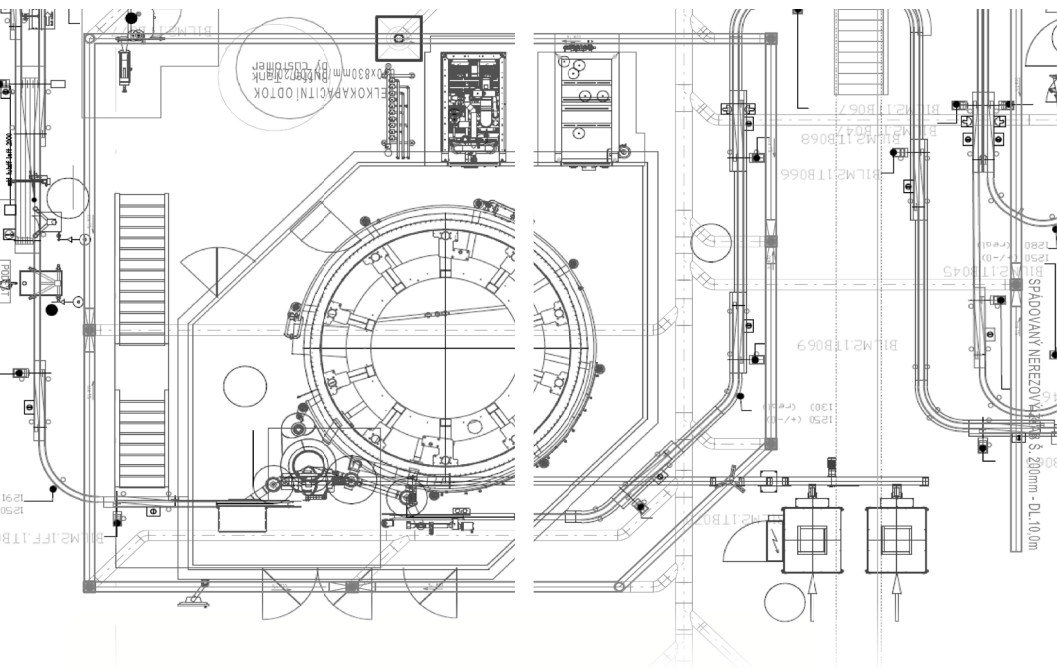
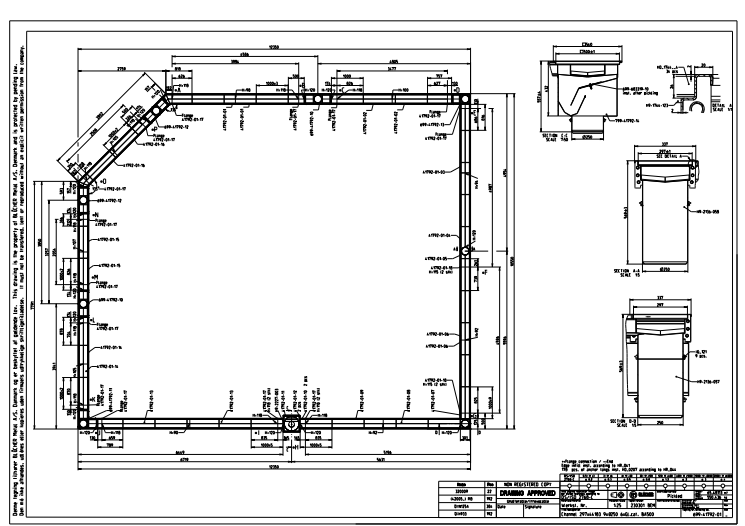
*Mario Cvitkovic,
Managing Director, Vibrofloors*

BLÜCHER®

A WATTS Brand

"This was an interesting project for us as it was the first time we had to make this particular combination as the channels are placed around the bottling machines and, at the same time, should be a part of the high flow drainage area. But we are always ready to take up any drainage challenge."

Micha Nierop,
Sales- & Logistic Coordinator, **BLÜCHER**



VIBROFLOORS®
WORLD GROUP

Further information:
www.blucher.com



BLÜCHER®

A WATTS Brand