

Industrial application

BLÜCHER® Drainage Systems



BLÜCHER®

A WATTS Brand

The logo for BLÜCHER, featuring the brand name in a bold, white, sans-serif font with a registered trademark symbol, set against a dark blue rectangular background.

BLÜCHER®

A **WATTS** Brand

The text 'BLÜCHER® EuroPipe' is displayed in white, bold, sans-serif font within a dark blue rectangular box.

BLÜCHER® EuroPipe

The text 'BLÜCHER® Channel' is displayed in white, bold, sans-serif font within a dark blue rectangular box.

BLÜCHER® Channel

The text 'BLÜCHER® Drain' is displayed in white, bold, sans-serif font within a dark blue rectangular box.

BLÜCHER® Drain

A low-angle photograph of a modern industrial building with a glass and steel facade, set against a clear blue sky. The building's structure is composed of a grid of blue steel beams and glass panels, with a large white cylindrical tank visible on the left side.

DRAINAGE SYSTEMS FOR **INDUSTRIAL APPLICATIONS** ALL OVER THE WORLD

BLÜCHER® drainage systems have proven their functionality and reliability in the industrial sector all over the world. Food factories, the beverage industry, pharmaceutical and chemical plants are some of the places where you will find a vast number of drainage solutions from BLÜCHER.



INDUSTRIAL

SPECIALISED IN STAINLESS STEEL

Hygienic

Clean and hygienic conditions in production facilities, kitchen areas and changing rooms are important elements contributing to efficiency. Properly treated stainless steel has a unique smooth surface that guarantees maximum flow capacity and excellent hygiene. Due to its low surface roughness bacterial growth on stainless steel is significantly less than on, for example, plastics.

Withstands high temperatures

Stainless steel can withstand a high degree of vibrations and it functions within a wide scale of temperatures. Being able to withstand temperatures over 800 °C, stainless steel can fulfill any demand for hot-water cleaning. In addition, it is a highly fire-resistant material that requires no further fire protection.

Strong and light-weight

Stainless steel is a strong, durable, pressure and chemical-resistant material. Due to the excellent material properties the weight of our products can be reduced by more than 20% as compared to cast iron making installation fast and easy.

Easy maintenance

Shaped without rough corners or edges, cleaning and maintaining stainless steel takes minimum effort and time. The removable water trap provides easy rodding access.

Design

If design is a parameter, which is becoming the case in more and more aspects of life, stainless steel is a durable and classic material that also stands the visual test of time.

Environmentally safe

Stainless steel is 100% recyclable and non-toxic.

Approvals

The BLÜCHER® drainage system carries the approvals of leading international classification authorities; for example ETA, SITAC, Byggforsk and BBA. Furthermore we carry out tests at international institutes, for example acoustic tests of BLÜCHER® EuroPipe at the International Fraunhofer Institut.

Fits everyone

The BLÜCHER® EuroPipe drainage pipework system can be used above and below ground, and it offers long-lasting and cost-efficient solutions for **all applications**.



HOUSING

Housing

Within the housing area BLÜCHER® EuroPipe is suitable for new building and renovation projects. BLÜCHER® EuroPipe provides the right flow in **single-family houses** and from the top floor to the basement in multi-storey housing.



COMMERCIAL

Commercial

The light-weight push-fit system combined with the exceptional fire resistant solution make BLÜCHER® EuroPipe the preferred pipe system in projects around the world. **Hospitals, schools, airports** and other **commercial customers** are among our loyal clients.



INDUSTRIAL

Industrial

The food, beverage and pharmaceutical industries value in particular the hygienic and sustainable BLÜCHER® EuroPipe solution. The smooth stainless steel surface and high flow capacity prevent deposits inside the pipework system, and the stainless steel provides a solution, which requires a minimum of maintenance and offers maximum longevity. In AISI 316L steel the pipe system also provides a durable solution for the chemical industry.



MARINE

Marine

The BLÜCHER® EuroPipe drainage pipework system is completely interchangeable between vacuum and gravity systems for black- and grey-water in marine applications. **Shipyards and owners** all over the world depend on longevity, low weight and the fire-resistant, hygienic and reliable solution for their sanitary discharge system.

KEEPING UP THE FLOW

BLÜCHER is committed to leading water away and keeping up the flow in the housing, commercial, industrial and marine sectors. The industrial sector depends on the performance of our solutions every day, where hygiene and durability are of great essence. Developing and producing drains, channels and pipes are BLÜCHER's core competence. We give you a wide and deep range of products to solve any drainage requirement within industrial applications.

BLÜCHER®

A WATTS Brand

Selected references within the Biotech and Pharmaceutical Industry



Johnson & Johnson

Unilever





INDUSTRIAL

BIOTECH AND PHARMA

BLÜCHER provides safe drainage solutions removing water from production areas, laboratories, utility rooms, kitchens and changing rooms in the biotech and pharmaceutical industry.

Most suitable products

We offer a wide range of floor drains, channels and pipes as standard or customised products. Every care has been taken to develop products requiring minimum maintenance whilst offering excellent hygienic properties and high flow capacities, for instance the removable water trap providing easy access for cleaning and inspection.

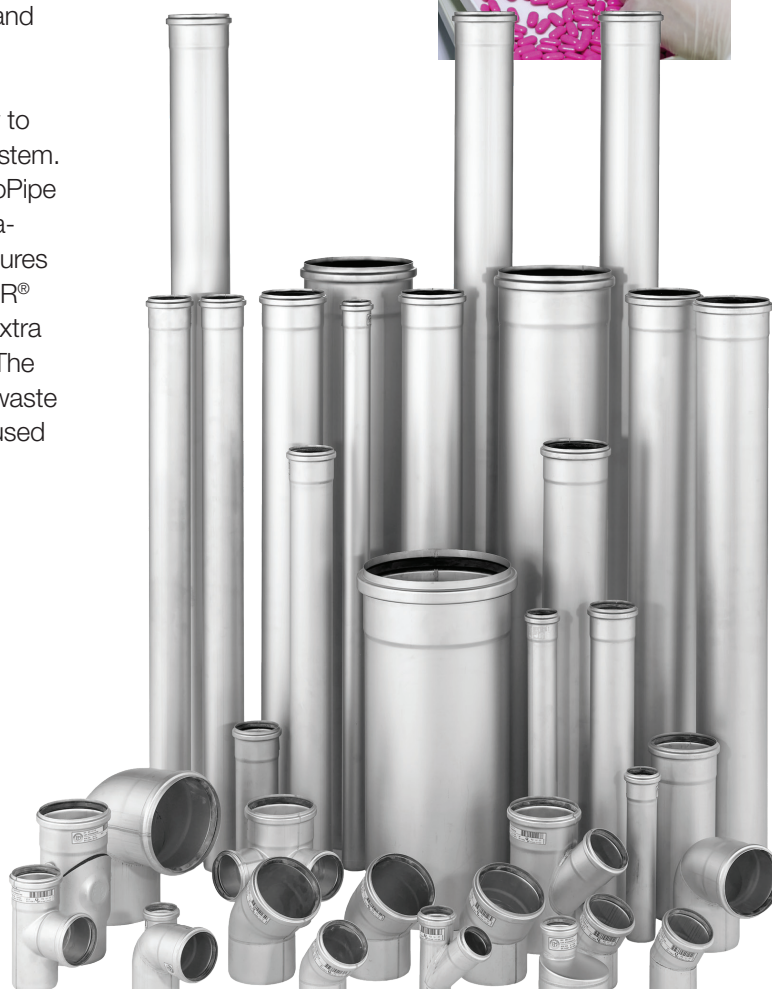
Specifically suitable for the biotech and pharma industry are clean room floor drains with gas-tight cover, flushing-rim drains, dual-contained drains, pipes and channels.

The outlet of the drains of course connect directly to the **BLÜCHER® EuroPipe** drainage pipework system. With its excellent product quality BLÜCHER® EuroPipe fulfills the requirements of the biotech and pharmaceutical industry regarding, for instance, temperatures and resistance to chemicals. If required BLÜCHER® EuroPipe can be supplied as dual-contained for extra hygiene and safety or as pre-fabricated solution. The reliable push-fit system can be used for process waste and rainwater, soil and waste, and the system is used extensively for laboratory waste.



Selected references

*Pfizer, GSK, Astra Zeneca,
Johnson & Johnson, Aventis,
Sandoz, Smith Kline.
Complete reference list
available on request.*



BLÜCHER®

A **WATTS** Brand

**Selected references within
the Food Industry**





INDUSTRIAL

FOOD

BLÜCHER provides drainage solutions to all kinds of food factories. The smooth, easy-to-clean surfaces of the stainless steel products ensure excellent hygiene, self-cleansing and excellent flow capacity.

Most suitable products

We offer a wide range of drains, channels and pipes to solve any drainage requirement in the food industry.

BLÜCHER® Drain for all kinds of flooring with removable water trap, filter basket or sand bucket for easy cleaning.

BLÜCHER® Channel is available with or without outlet box, for grating or as slot channel. The channels are combinable with the same lower parts as the drains and are available with a wide range of gratings suitable for medium to heavy weight loads.

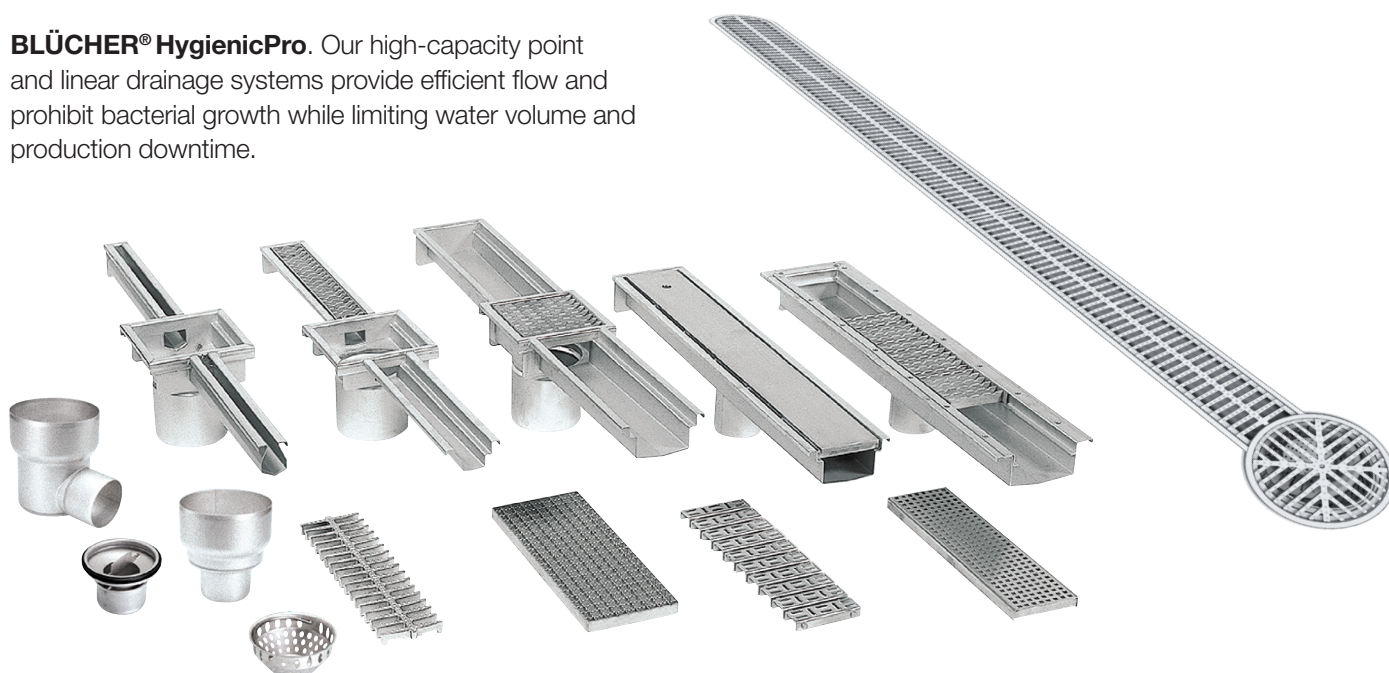
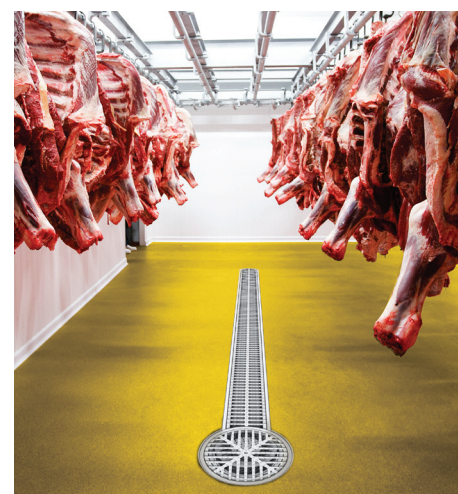
BLÜCHER® EuroPipe is an easy to install push-fit drainage pipework system that exceeds the demands of the strictest user and statutory requirements. The smooth inner surface prevents bacterial growth and blockages.

BLÜCHER® HygienicPro. Our high-capacity point and linear drainage systems provide efficient flow and prohibit bacterial growth while limiting water volume and production downtime.

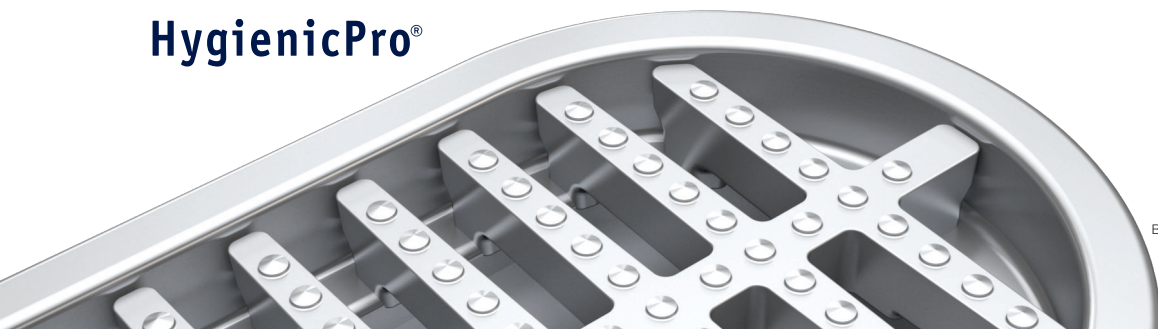


Selected references

Kraft, Nestlé, Danish Crown, Daloon, Tulip, Knorr, Singapore Airport Catering, Ahlgreens, Estrella, Kelloggs, McDonalds, Ferrero, Delmonte Foods. Complete reference list available on request.



HygienicPro®



Selected references within Breweries and Dairies



BREWERIES AND DAIRIES

BLÜCHER provides drainage solutions removing water in brewery bottling halls, dairies and abattoirs - or from roofs - all over the world.

Most suitable products

The **BLÜCHER® Channel** and **BLÜCHER® Drain** Industrial range of products are modular systems and therefore easy to plan. The frames and gratings are able to withstand the weight loading of heavy vehicles and goods being moved around.

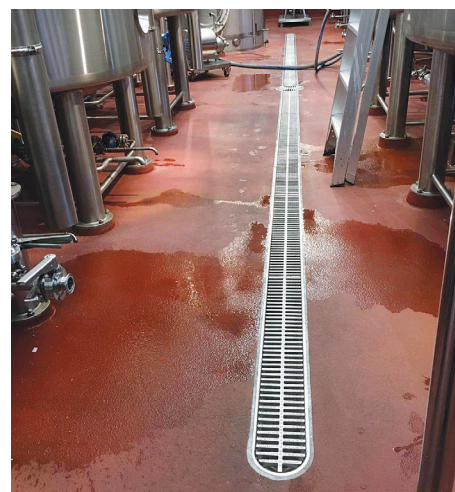
BLÜCHER also offers an extensive range of accessories such as glass separator, filter basket and sand bucket, making it possible to completely avoid overloading the sewage system with unintentional discharges.

For roofs with bitumen or single-ply membrane BLÜCHER offers a complete roof drainage system for gravity or siphonic drainage.



Selected references

CocaCola, Pepsi, Heineken, Carlsberg, Whitbread Breweries, Budweiser, Tropicana Juice Processing, Absolut Vodka, Nestlé, Arla Food, Danone, Unilever, Almarai Dairy. Complete reference list available on request.

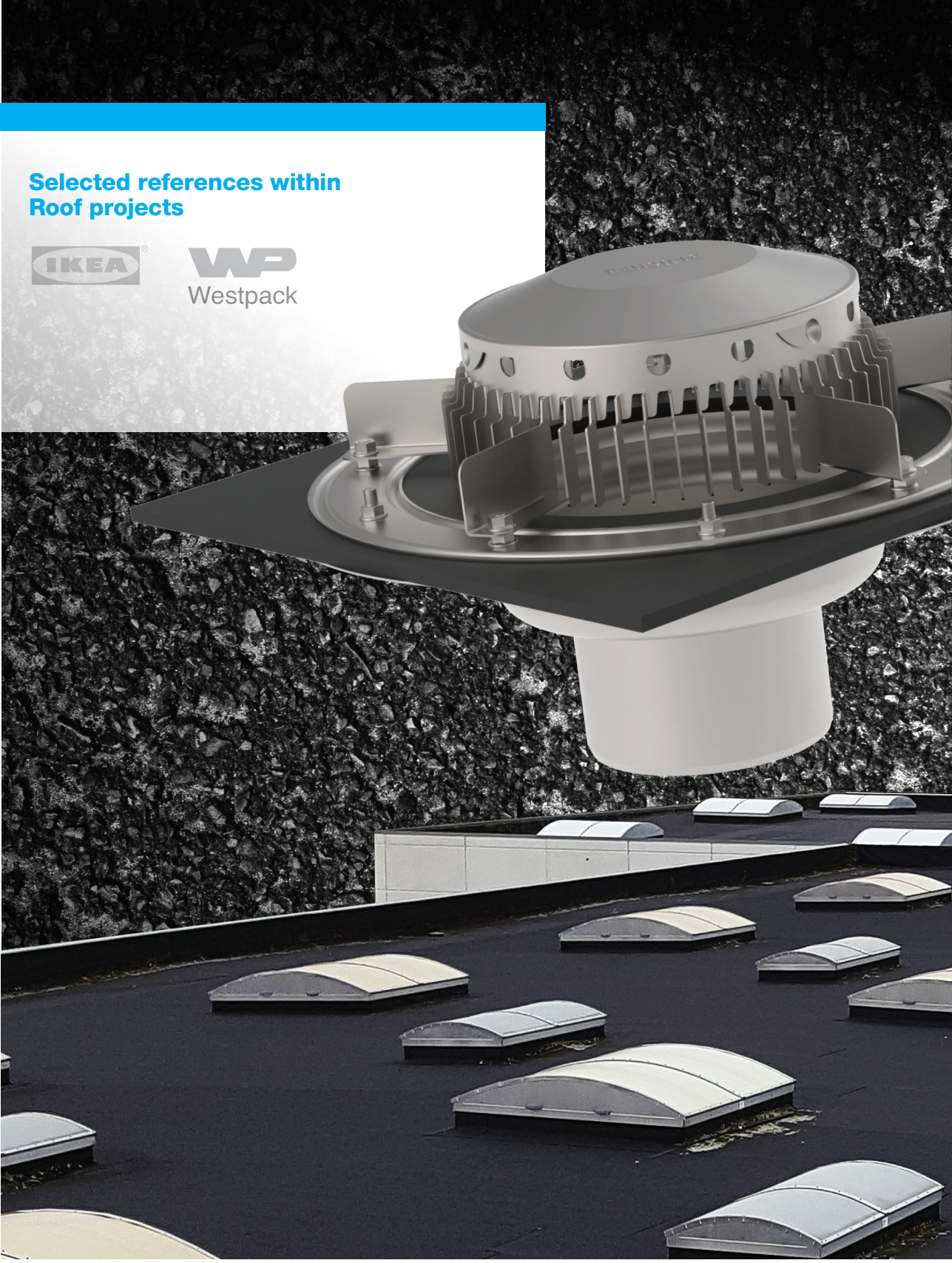


“When planning the drainage systems, it was a vital point that we were able to design them with great accuracy in Denmark. The system provides a large impounding capacity and is capable of discharging very large quantities in a short time. Furthermore the system is practically self-cleansing, and this means that the brewery does not have to spend resources on day-to-day maintenance.”

Project manager Chris Lockhart, Carlsberg brewery VENA, Sct. Petersburg



Selected references within Roof projects





INDUSTRIAL

BLÜCHER® DRAIN ROOF

BLÜCHER® Drain Roof encompasses stainless steel roof drains and accessories. In combination with the BLÜCHER® EuroPipe stainless steel push-fit pipework system, BLÜCHER® Drain Roof makes up a complete stainless steel roof drainage system. The system can be used for all types of flat roofs with bitumen or single-ply roof membrane, and is equally suitable for gravity and vacuum or siphonic systems.

Gravity Roof. Stainless steel drains with a bigger opening ensure safe flow and a long service life on the roof.

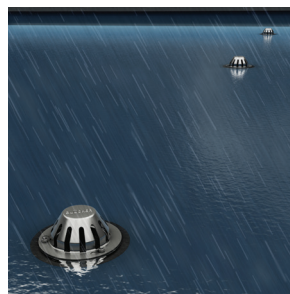
The large inside pipe diameter combined with the smooth stainless steel surface gives 30% higher flow capacity.

Green Roof. With Green Roof you can control the maximum flow. Green roofs protect the roof covering from drying out due to UV rays. They allow water to evaporate and are environmentally friendly.

Blue Roof. Blue Roof retains the water on the roof and only releases it when the sewer can accommodate it.

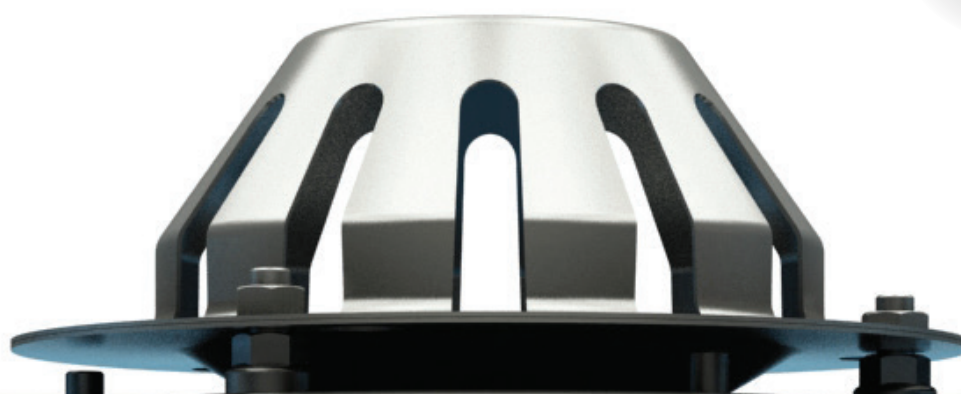
Siphonic Roof. Siphonic Roof is a vacuum drainage system which can remove more than 110 m³ of water per hour. Only a few downpipes are required. Small-diameter pipes mean no air in the pipes as the water is drawn out by suction. Horizontal pipes without fall are fitted just under the ceiling.

Intelligent Roof. The intelligent roof notifies you when the drain is blocked by leaves or covered with snow. The intelligent roof detects potential damage before it occurs.



Selected references

Westpack, IKEA. Complete reference list available on request.



BLÜCHER offers you a complete roof drainage system.



GRAVITY
ROOF



GREEN
ROOF



BLUE
ROOF



SIPHONIC
ROOF



INTELLIGENT
ROOF



BALCONY
& PARKING



Your drainage partner keeps up your flow

Customers all over the world benefit from our continuous know-how, dedicated service and common sense through quality drainage solutions leading waste water away.

We put the expertise about drainage that we have gained through more than 50 years on the global drainage market, into practical use, and we know how to stay ahead through product development and modern production facilities. At **BLÜCHER** we play an active part in setting the future, global standards, and all products are tested and approved to the highest industry standards.

blucher.com

BLÜCHER® EuroPipe

BLÜCHER® Channel

BLÜCHER® Drain



GFC - 100.01.2020 - 22 - 30 - Copyright by Blücher

BLÜCHER®

A **WATTS** Brand

T: +45 99 92 08 00 • blucher.com

© 2019 blucher.com