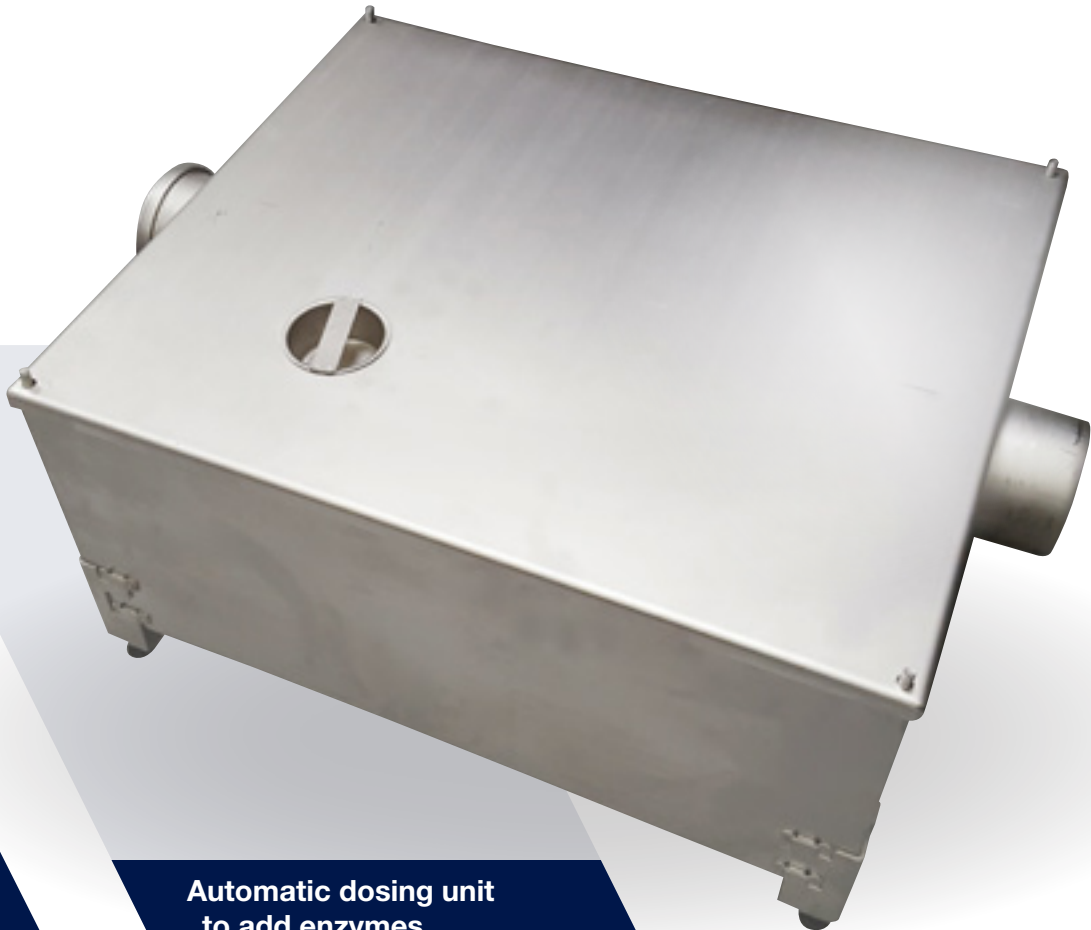


BLÜCHER® GREASE SEPARATOR®

A MODERN EVOLUTION



Automatic dosing unit
to add enzymes

Different sizes for
different needs

Compact models

100% stainless steel

Low-maintenance required

BLÜCHER® GREASE SEPARATOR

Waste water from food preparation contains grease and oils of animal or vegetable origin.

Grease is poorly biodegradable, generates toxic gases and poses a higher risk of pipeline corrosion.

A study carried out by CNIDEP in 2007 states that in catering, restaurants and food-processing companies, grease comes from mainly 3 processes: 54% from cooking, 30% from manual dish-washing and 7% from machine dish-washing.

A grease separator separates and retains the separated grease and fat residues within the unit before the wastewater enters the wastewater pipe system. This means that the buildup of grease deposits that would otherwise disturb the proper operation of the wastewater pipe system will be minimized, thus lowering maintenance costs significantly.

Efficient Grease Control

The BLÜCHER® Grease Separators are a modern evolution of the traditional grease/fat trap.

The BLÜCHER® Grease Separators act as a point of treatment for a liquid digestion media (LDM). The digestion media can be introduced either manually or automatically.

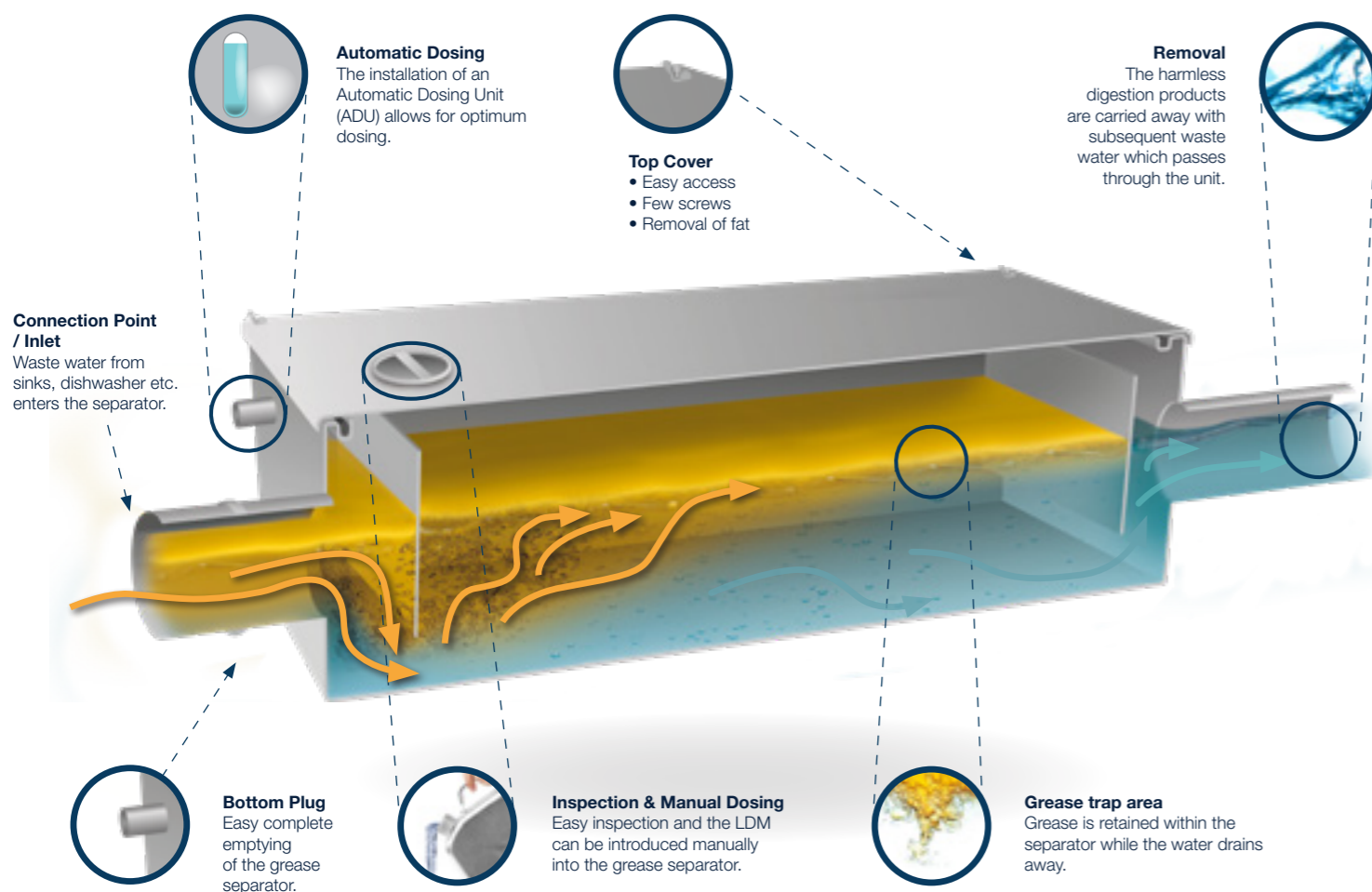
How it works

The illustration below shows how the BLÜCHER® Grease Separator work.

The wastewater enters into the first chamber and meets the first wall. This wall forces the flow down to the bottom of the separator and ensures that the surface is stagnant so that grease rises to the surface due to the lower weight compared to water, and remains in the tank.

The second wall holds the grease and presses the wastewater underneath, subsequently leaving out from the outlet pipe.

When the digestion media is added to the BLÜCHER® Grease Separator (either automatically with a dosing unit or manually), the enzymes from the digestion media will start to "eat" the grease contained in the separator, ensuring longer intervals between emptying the BLÜCHER® Grease Separator of grease and fat.



BLÜCHER® GREASE SEPARATOR TYPE NOS. AND SIZES

In catering, restaurants, food-processing etc. the proper function of the grease separator depends mainly on the amount of grease residue and very little on the flow volume, therefore sizing according to EN 1825-2 standard, where using the number of meals served per day, will provide the most accurate sizing.

The formula used is the following:

$$NS = \text{Number of meals} \times V \text{ meals} \times fd \times ft \times fr \times fq$$

(3600 x daily operating time)

fd: density factor; ft: temperature factor;

fr: cleansing agent factor; fq: peak factor

The above formula is used to determine the size/dimensioning of the BLÜCHER® Grease Separators.

The BLÜCHER® Grease Separator comes in 4 sizes with capacity ranging from 35 to 210 meals per day. See the product range below.



Type number: 970-14155-01

Stainless steel Grease Separator Grade AISI 304

Size LxWxD: 684mm x 578mm x 289mm

Inlet and outlet: OD 110mm

Meals per day: 35

Recommended dosing media ml/day: 100*

Type number: 970-14155-03

Stainless steel Grease Separator Grade AISI 304

Size LxWxD: 756mm x 506mm x 502mm

Inlet and outlet: OD 110mm

Meals per day: 85

Recommended dosing media ml/day: 100*

Type number: 970-14155-05

Stainless steel Grease Separator Grade AISI 304

Size LxWxD: 756mm x 506mm x 702mm

Inlet and outlet: OD 110mm

Meals per day: 160

Recommended dosing media ml/day: 150*

Type number: 970-14155-07

Stainless steel Grease Separator Grade AISI 304

Size LxWxD: 1006mm x 506mm x 702mm

Inlet and outlet: OD 110mm

Meals per day: 210

Recommended dosing media ml/day: 200*

BLÜCHER® DOZING UNIT

The BLÜCHER® Dosing Unit is a programmable dosing system for grease separators, and housed in a wall mounted, stainless steel cabinet. The system comes with a 5 litres bottle of Bacti-G biological media and programmed for standard dose. The Bacti-G is fully encased to minimize risk of accidental spillage.

Battery, mains operated and mains with BMS versions are available to suit all situations. BMS version alerts users to power failure and liquid depletion.

The dosing unit comes pre-programmed with all the necessary fittings required for installation.

Type number: MODD1/CABINET

Stainless steel dosing unit and housing

The unit comes complete with pre-programmed mains operated peristaltic pump + 5 litres of dosing medium and all connecting tubes with 2 metres of cable to connect to the mains electricity supply (230 V).

Size LxWxD: 523mm x 207mm x 155mm



MODD1/CABINET



MODD1

Type number: MODD1

Only dosing unit without housing and Liquid Digestion Media

Liquid Digestion Media

Liquid type no. 691170 (5 litres bottle – for automatic dosing)

Liquid type no. 691160 (12 litres bottle – for automatic dosing)

Powder type no. 691180 (18 kg comes in a pack of 24 numbers)



■ Danish Design and Production

Founded in Denmark in 1965, BLÜCHER® has grown into a leading global manufacturer of stainless steel drainage systems. The BLÜCHER® Group employs more than 400 staffs worldwide.

Customers all over the world appreciate our know-how, dedicated service, and common sense.

BLÜCHER® drainage products are manufactured in Denmark, using the most modern production methods and in accordance to internationally recognised quality standards, ISO 9001 and ISO 14001.

■ Safe and Sustainable Solutions for all Marine Applications

To date, BLÜCHER® drainage solutions have been installed on more than 5,000 vessels and platforms ranging from cruise liners and ferries, luxury yachts, merchant ships, navy vessels, fishing vessels as well as offshore ships and platforms.

Furthermore, the most respected marine classification societies worldwide have approved BLÜCHER® drainage system.

BLÜCHER® EuroPipe

BLÜCHER® Channel

BLÜCHER® Drain

BLÜCHER

Pugdølvej 1

7480 Vildbjerg

Tlf.: +45 99 92 08 00

Email: export@blucher.com

www.blucher-marine.com