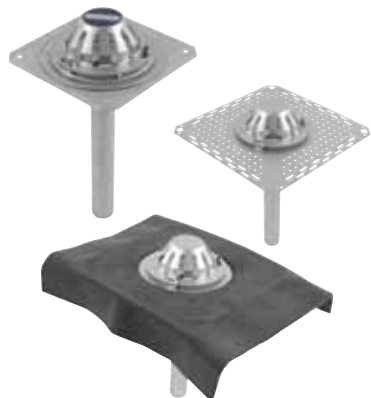


## Operating and maintenance instructions

### BLÜCHER® Drain Roof



#### Comprising:

---

BLÜCHER® Drain Roof and BLÜCHER® EuroPipe. For gravity and siphonic systems.

#### Accessories and spare parts:

---

Electrical heating cable

Insulation sleeve

Separate lower parts

Leaf guards

Set of nuts for roof drains

Emergency drainage kits

Product details available in the products database at [www.blucher.com](http://www.blucher.com)

#### For the owner/user:

---

BLÜCHER® Drain Roof roof drainage products in stainless steel AISI 304 (alternatively AISI 316L) have been installed. The roof drains have been designed and tested in accordance with EN1253. The steel pipes have been designed and tested in accordance with EN1124.

#### Prior to starting use:

---

- Check that the roof drains have been installed correctly (see installation instructions supplied with the product or at [www.blucher.com](http://www.blucher.com))
- Check that the roof drains have been fixed to the building structure
- Check that roof drains have been fixed securely and can withstand pressure and pressure drops
- Prepare a maintenance plan for check of roof drains and the system

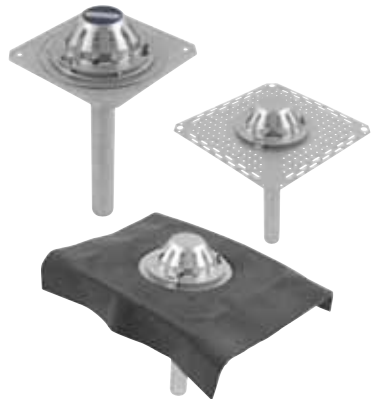
#### Normal operation:

---

BLÜCHER® Drain Roof has been designed for normal operation. However, we recommend that a procedure for cleaning the roof drains is established to ensure that water is not blocked from the system.



KEEPING UP THE FLOW



## Cleaning:

---

- Loosen the screws in the leaf guard so that the leaf guard can be turned and lifted off the roof drain. In siphonic system, turn and lift remove the siphonic plate as well
- Clean the drain
- Put siphonic plate (if relevant) and leaf guard back in place and tighten the screws

## Technical data:

---

Roof drains have been designed and tested in accordance with EN1253.

Steel pipe has been designed and tested in accordance with EN1124.

Product catalogues and products database available at [www.blucher.com](http://www.blucher.com)



KEEPING UP THE FLOW