

Commercial application

BLÜCHER® Drainage Systems



BLÜCHER®

A WATTS Brand

The logo for BLÜCHER, featuring the brand name in a bold, white, sans-serif font inside a dark blue rectangular box.

A **WATTS** Brand

The text 'BLÜCHER® EuroPipe' in white, bold, sans-serif font, set against a dark blue rectangular background.The text 'BLÜCHER® Channel' in white, bold, sans-serif font, set against a dark blue rectangular background.The text 'BLÜCHER® Drain' in white, bold, sans-serif font, set against a dark blue rectangular background.The section header text in a white box, with 'COMMERCIAL APPLICATIONS' highlighted in blue. The background of the entire page is a photograph of a modern building with a glass facade and a section of copper-colored metal cladding.

BLÜCHER® sanitary discharge systems have proven their functionality and reliability in installations all over the world. Hospitals, fitness centres, hotels, schools, restaurants, shopping malls and airports are among the places where you will find a vast number of drainage solutions from BLÜCHER®.



COMMERCIAL

SPECIALISED IN STAINLESS STEEL

Well-being

Clean and hygienic conditions in public bathrooms, changing rooms and commercial kitchens are important elements contributing to efficiency and the sense of well-being. Properly treated stainless steel has a unique smooth surface that guarantees maximum flow capacity and excellent hygiene. Due to its low surface roughness, bacterial growth on stainless steel is significantly less than on, for example, plastic and ordinary steel surfaces.

Strong and light-weight

Stainless steel is a strong, durable, pressure- and chemical-resistant material. Due to the excellent material properties, the weight can be reduced by more than 20% as compared to cast iron, and this contributes to the ease of installation.

Non-combustible

Stainless steel can withstand a high degree of vibrations and it functions within a wide scale of temperatures. Being able to withstand temperatures over 800 °C, stainless steel is a highly fire-resistant material and requires no further fire protection.

Easy maintenance

Shaped without rough corners or edges, cleaning and maintaining stainless steel takes minimum effort and time. The removable water trap provides easy rodding access.

Design

If design is a parameter, which is becoming the case in more and more aspects of life, stainless steel is a timeless classic material that also stands the visual test of time.

Environmentally safe

Stainless steel is a 100% recyclable and non-toxic material.

Fits everyone

The BLÜCHER® EuroPipe drainage pipework system can be used above and below ground, and it offers long-lasting and cost-efficient solutions for **all applications**.



HOUSING

Housing

Within the housing area BLÜCHER® EuroPipe is suitable for new building and renovation projects. BLÜCHER® EuroPipe provides the right flow in **single-family houses** and from the top floor to the basement in multi-storey housing.



COMMERCIAL

Commercial

The light-weight push-fit system combined with the exceptional fire resistant solution make BLÜCHER® EuroPipe the preferred pipe system in projects around the world. **Hospitals, schools, airports** and other **commercial customers** are among our loyal clients.



INDUSTRIAL

Industrial

The food, beverage and pharmaceutical industries value in particular the hygienic and sustainable BLÜCHER® EuroPipe solution. The smooth stainless steel surface and high flow capacity prevent deposits inside the pipework system, and the stainless steel provides a solution, which requires a minimum of maintenance and offers maximum longevity. In AISI 316L steel the pipe system also provides a durable solution for the chemical industry.



MARINE

Marine

The BLÜCHER® EuroPipe drainage pipework system is completely interchangeable between vacuum and gravity systems for black- and grey-water in marine applications. **Shipyards and owners** all over the world depend on longevity, low weight and the fire-resistant, hygienic and reliable solution for their sanitary discharge system.

KEEPING UP THE FLOW

BLÜCHER® is committed to leading water away and keeping up the flow in the housing, commercial, industrial and marine sectors. The commercial sector depends on the performance of our solutions every day, where hygiene and durability are of great essence. Developing and producing drains, channels and pipes is BLÜCHER's core competence. We give you a wide and deep range of products to solve any drainage requirement within commercial applications.

Selected references within hospitals

NHS
Portsmouth Hospitals
NHS Trust



Princess Alexandra
Hospital
BRISBANE • AUSTRALIA

REGION **H** Hvidovre
Hospital



伊利沙伯醫院
QUEEN ELIZABETH HOSPITAL



HOSPITALS

The efficient function of any healthcare environment relies on the design and performance of its drainage and plumbing systems. Stainless steel's inherent capabilities make it the ideal material for such functions, its exceptional durability and performance qualities having long been accepted.

In areas where hygiene, fire safety and corrosion resistance are paramount, stainless steel is the first choice of material.

Most suitable products

Products such as **BLÜCHER® EuroPipe** that are easy to install and cut, can be used in prefabrication off site and are lightweight, hygienic and chemical-resistant. While providing a long-term guarantee of performance, BLÜCHER® EuroPipe significantly reduces installation time and costs.

Floor drains for vinyl flooring can be of great interest to hospital bathrooms - these come as circular floor drains or elegant bathroom channels.

For preventing bacterial spreading in clean rooms BLÜCHER offers gas-tight solutions.

The patented **BLÜCHER® water trap** is self-cleaning and easily removed to facilitate direct access for rodding. Also a water trap variant that actively prevent the spreading of fire through the piping system is available.



Selected references

Queen Mary Hospital (Portsmouth), Hvidovre hospital (DK), Blackpool Victoria Hospital, Queen Elizabeth Hospital (Hong Kong), St. James Hospital (Leeds), University College London Hospital. Reference list available on request.



“On the Wharfedale Hospital in Leeds we considered PVCU and stainless steel for drainage pipework. In ceiling voids, the use of PVC would have required installation of fire stops, and this was a critical factor. We chose BLÜCHER® EuroPipe because combustibility is not an issue with stainless steel drainage, and the product itself is also light, easy to fit, a clean installation and virtually maintenance-free once installed.”

Contractor Russell Horner, Haden Young



FITNESS & SPORTS

Sport arenas, fitness centres, gyms and swimming pools all over the world use BLÜCHER® drainage solutions.

Stainless steel grade AISI 316L gives a chemical-resistant solution, and it ensures a classic and aesthetic look.

Most suitable products

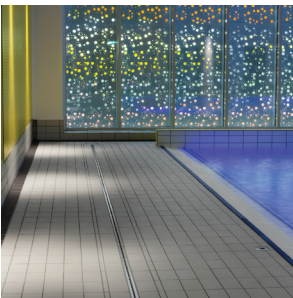
Several options to the **BLÜCHER® Drain** range are available to suit all applications including traps, filters, membrane flanges, grates and side inlets. With the traps removed the drains provide full bore rodding access. Upper parts are adjustable in height and angle.

A standard range of channel designs and sizes are available off the shelf. Bespoke channels are produced to client specification. Outlets can be trapped with the option for filters. Inlets and plain ends can be provided for connection to existing drainage. In-fill edges, upper edge protection strips and adjustable legs to aid installation are available as options. Can be supplied with or without invert falls. Channels above 5 metres are produced in sections with gasket-bolted flanges.

Slim-line easy-to-install channels available in various lengths from 300 to 1000 mm. Ideal for single occupancy shower areas. Water traps and gratings are optional. Suitable for tiled, resin and vinyl floor finishes.



Selected references
Sportcentrum Fitness First (the Hague), Czàsar Swimming Pool (Budapest), Sports & Aquatic Centre (Melbourne). Reference list available on request.



INSTITUTIONS

From Uppsala to Paris. Below or above ground. In changing rooms, laboratories, toilets, kitchens and washrooms or even on the roof top. BLÜCHER® drainage systems can solve any drainage need in any type of school, resthome, prison or other public institution.

The smooth stainless steel surface and high capacity prevent settlements and standing water in all indoor public areas. An integrated and complete solution giving you the hygiene and easy cleaning that is necessary where many people gather.

Furthermore stainless steel is an environmentally friendly solution being 100% recyclable.

Most suitable products

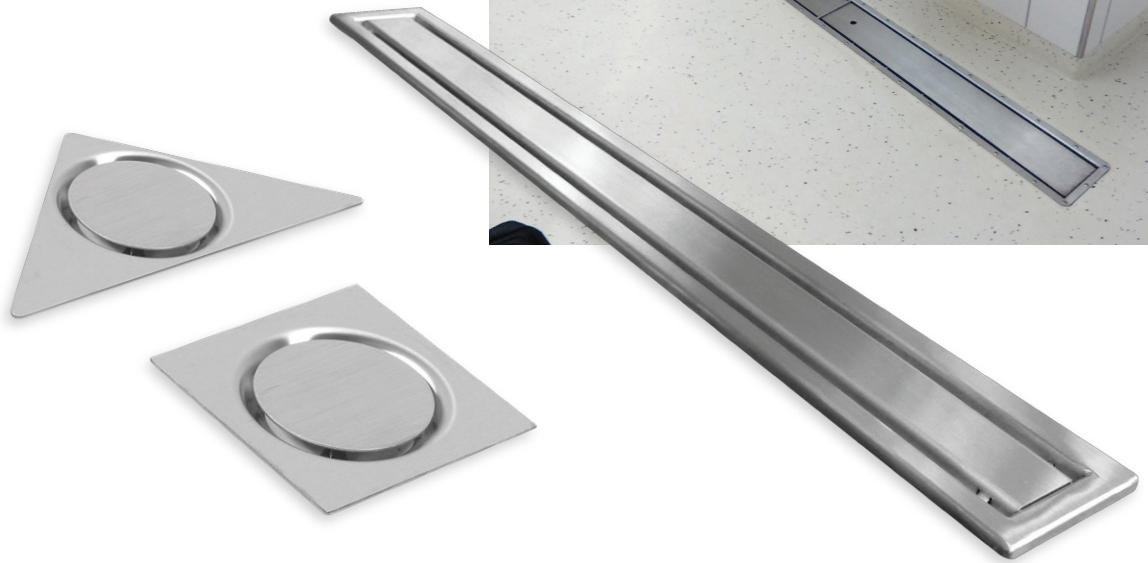
BLÜCHER® provides kitchen channels for the kitchen areas, drains and channels for the wet room areas and BLÜCHER® EuroPipe to connect the whole system.

Also roof drains and balcony drains are available for outdoor areas.



Selected references

International Grammar School (Sydney), Collège Bellevue (Toulouse), Elite University (Budapest), Universitat Pompeu Fabra (Barcelona), Augustenborgskolan (Malmö), Canadian International School (Hong Kong), North Texas State University, Elderly Citizens Home (Adelaide), Old Peoples Care Home (Budapest), Maryland State Prison, HMP Pentonville (London), Uppsala Polishus. Reference list available on request.





Selected references

Hilton Hotels, Hotel Marriot, Sofitel, Novotel, The Ritz Carlton (Bahrain), Hotel Bella Sky (Copenhagen).

Reference list available on request.



HOTELS AND OTHER TALL BUILDINGS

BLÜCHER® provides drainage solutions removing water from bathrooms, utility rooms, kitchens and basements in multi-storey buildings preventing bad smell and standing water from becoming a concern.

Most suitable products

BLÜCHER® EuroPipe is the ideal drainage system for tall buildings. The stainless steel push-fit BLÜCHER® EuroPipe pipework system rises above the competition in several areas to offer the specifier and installer a cost effective, fire-safe and environmentally friendly drainage solution.

BLÜCHER® EuroPipe pipework system - unlike plastics - requires no fire collars and will not cause spread of fire neither up nor down. It has been proven by BSRIA that BLÜCHER® EuroPipe is 40% quicker to install than cast iron.

In combination with **BLÜCHER® Drain Roof**, BLÜCHER® EuroPipe also constitute a complete system for siphonic or gravity roof drainage.

The architect will be pleased to find a wide range of design drains for the visible drainage installation in bathrooms ranging from elegant bathroom channels to trendy triangle drains in six different patterns.



RESTAURANTS AND OTHER COMMERCIAL KITCHENS

Kitchens in restaurants, stadiums, amusement parks and other commercial areas benefit from the hygiene of stainless steel that helps provide safe food for a lot of people each day.

Most suitable products

BLÜCHER® Drain, **BLÜCHER® Channel** and kitchen channels are the obvious choice. Available in several standard dimensions with optional gratings for different needs.

In particular we can recommend the **HygienicPro grating** - a patented grating leaving no leftovers.

For easy cleaning you can choose the removable water trap and a filter basket saving you time every day.

The grease separator is also a necessity in today's modern kitchen.

Within the **BLÜCHER® EuroPipe** range we would like to point out **the rat stop** available with or without cleaning access. For a solution resistant to all kinds of chemicals choose our products in grade AISI 316L acid resistant steel.



Selected references

McDonalds, Burger King, Pizza Hut, Le Louvre, Oslo Opera, Bahrain National Museum, Ministère de L'Industrie, State Library of Victoria, Royal Danish Theatre, Copenhagen Zoo, Hong Kong Disneyland. Reference list available on request.





Selected references
Dubai Mall, IKEA, Tesco, Coop, Metro, Carrefour, Lidl, Woolworths. Reference list available on request.



SHOPPING MALLS

From the local super market to the world's biggest mall. You can find a drainage solution for your specific needs within the BLÜCHER® range of products.

Most suitable products

BLÜCHER® EuroPipe, because it is truly lightweight, does not need mechanical aids to lift the pipes into position. In most cases one man can move and fit BLÜCHER® EuroPipe.

On horizontal runs BLÜCHER® EuroPipe needs brackets at 3m centres. On vertical runs BLÜCHER® EuroPipe, which is self supporting, requires no additional anchors at the base of the stack nor at every 5th floor interval and can be bracketed every 3 metres on straight runs.

BLÜCHER® Channel for linear drainage are available in numerous different shapes and lengths. A standard product program supplemented by a modular range and customised solutions gives you the whole palette.

BLÜCHER® Drain ranging from light- to heavy-duty drains is also part of the standard program. All drains are available for concrete, tiled and vinyl flooring.

Furthermore design shower channels in a wide variety of patterns are available from stock.



AIRPORTS

An airport must function. Thousand of passengers each day should reach their travel destination in an unworried way. The function of the drainage system is essential to fulfill this.

Most suitable products

BLÜCHER® EuroPipe is ideal for indoor and outdoor drainage in airports. Because of the astetic looks it is also possible to let visible piping become an integrated part of the architectures.

For roof areas with bitumen or single-ply membrane BLÜCHER offers a complete roof drainage system for gravity or siphonic drainage.

In the restaurants the **BLÜCHER® kitchen channels** provide easy daily cleaning, and rest rooms remain fresh and clean with all day with **BLÜCHER® Drain**. The floor drains can be installed with removable water trap giving you easy access for cleaning or with the multi water trap preventing smel-ling even if the water trap dries out.



Selected references

Gardmoen Oslo, Copenhagen Airport, Heathrow Airport, Barcelona Airport, New Athens Airport, Orly Airport, Arlanda Airport, Helsinki Airport. Reference list available on request.





Your drainage partner keeps up your flow

Customers all over the world benefit from our continuous know-how, dedicated service and common sense through quality drainage solutions leading waste water away.

We put the expertise about drainage that we have gained through more than 50 years on the global drainage market, into practical use, and we know how to stay ahead through product development and modern production facilities. At **BLÜCHER** we play an active part in setting the future, global standards, and all products are tested and approved to the highest industry standards.

blucher.com

BLÜCHER® EuroPipe

BLÜCHER® Channel

BLÜCHER® Drain



GFC - 100.01.2020 - 221 231 - Copyright by Blücher

BLÜCHER®

A **WATTS** Brand

T: +45 99 92 08 00 • blucher.com

© 2019 blucher.com