

BLÜCHER® Rainwater Product Catalogue

Roof, Balcony, Terrace, and Facade pipe work











BLÜCHER®

A WATTS Brand

RAINWATER APPLICATIONS



TABLE OF CONTENTS

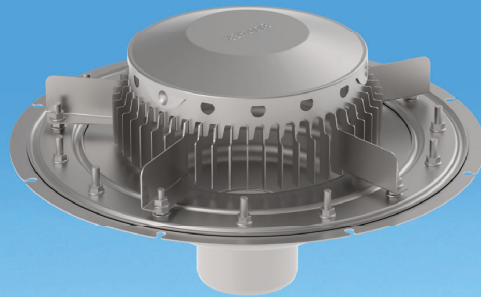
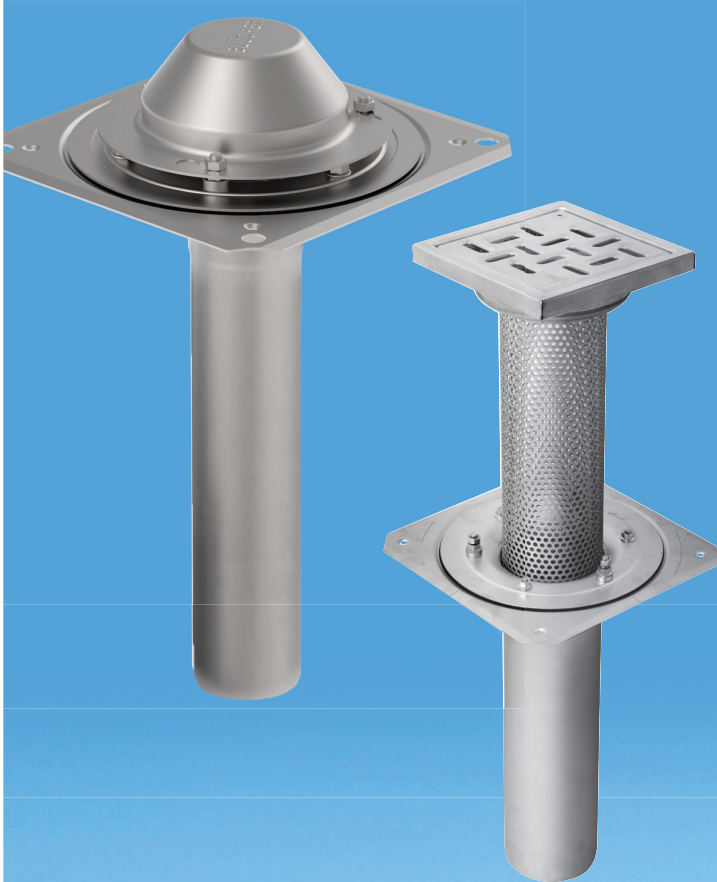
1. PRESENTATION OF BLÜCHER	2	8. LOWER PARTS	29
About us	4	Lower parts for roof drains	
 2. BLÜCHER® SIPHONIC ROOF	6	 9. BLÜCHER® BALCONY DRAIN	33
Roof drains for siphonic	7	Balcony drains	34
Flow rates	10	 10. BLÜCHER® INTELLIGENT ROOF	35
 3. BLÜCHER® GRAVITY ROOF	12	Connected products for roof drains	36
Roof drains for gravity	13		
Flow rates	17	11. BLÜCHER® ROOF ACCESSORIES	37
 4. BLÜCHER® PARAPET ROOF	19	Accessories for roof drains	38
Parapet drains for gravity	20		
 5. BLÜCHER® GREEN ROOF	21	12. BLÜCHER® EUROPIPE	43
Roof drains	22	Pipes	44
 6. BLÜCHER® BLUE ROOF	23	Fittings - Bends	46
The Blue Roof water retention drain		Fittings - Branches	50
		Fittings - Access pipes and bends	54
		Fittings - Sockets	55
		Fittings - Increasesers and reducers	56
		Fittings - Adaptors	57
		Accessories - Clamps	58
 7. BLÜCHER® EMERGENCY DRAIN	25	Accessories - Pipe hangers	59
Emergency drains	26	Accessories - Plugs	61
Flow rates	27	Accessories - Sealing rings	62
		Accessories - Others	63
		Flow tables	65
		Stormwater (Rainwater) - Horizontal pipework	66
		Foul Waste Water - Horizontal pipework	67
		Vertical (non-siphonic pipework)	68

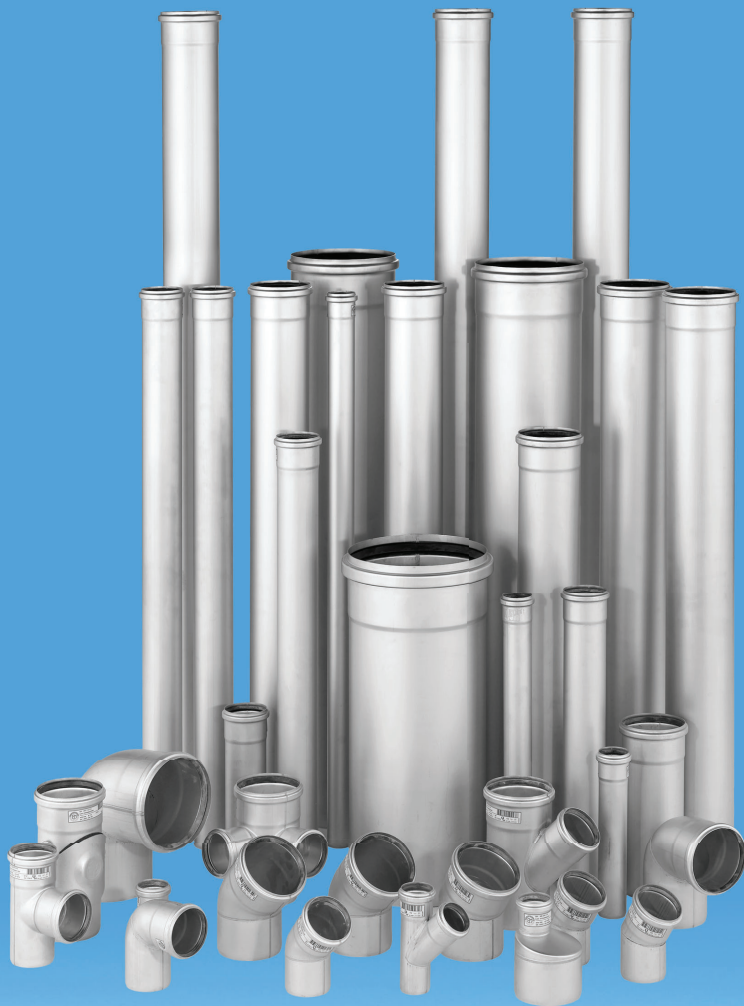
ABOUT US

BLÜCHER is a leading manufacturer of stainless steel drainage systems worldwide, founded by Johannes Blücher Skibild in 1965. With a deep understanding of the industry, BLÜCHER delivers to various sectors, including residential, commercial, marine, industrial, and infrastructure. With our innovative design, superior quality, commitment to sustainability, and excellent customer service BLÜCHER has established a strong reputation globally.

We offer a wide range of stainless steel drainage products designed to meet various requirements. Our product portfolio includes floor drains, channels, push-fit pipes, rainwater drainage systems, and more. With a focus on durability and functionality, BLÜCHER's solutions are known for robustness, longevity, and ease of installation.

BLÜCHER is owned by the American group Watts Water Technologies, Inc., which is the world leader in manufacturing innovative products for controlling water efficiency, safety, and quality. BLÜCHER is a well-established international company with around 375 employees; headquarters is located in Vildbjerg, Denmark and has a turnover of approx. 75 million Euros per year.





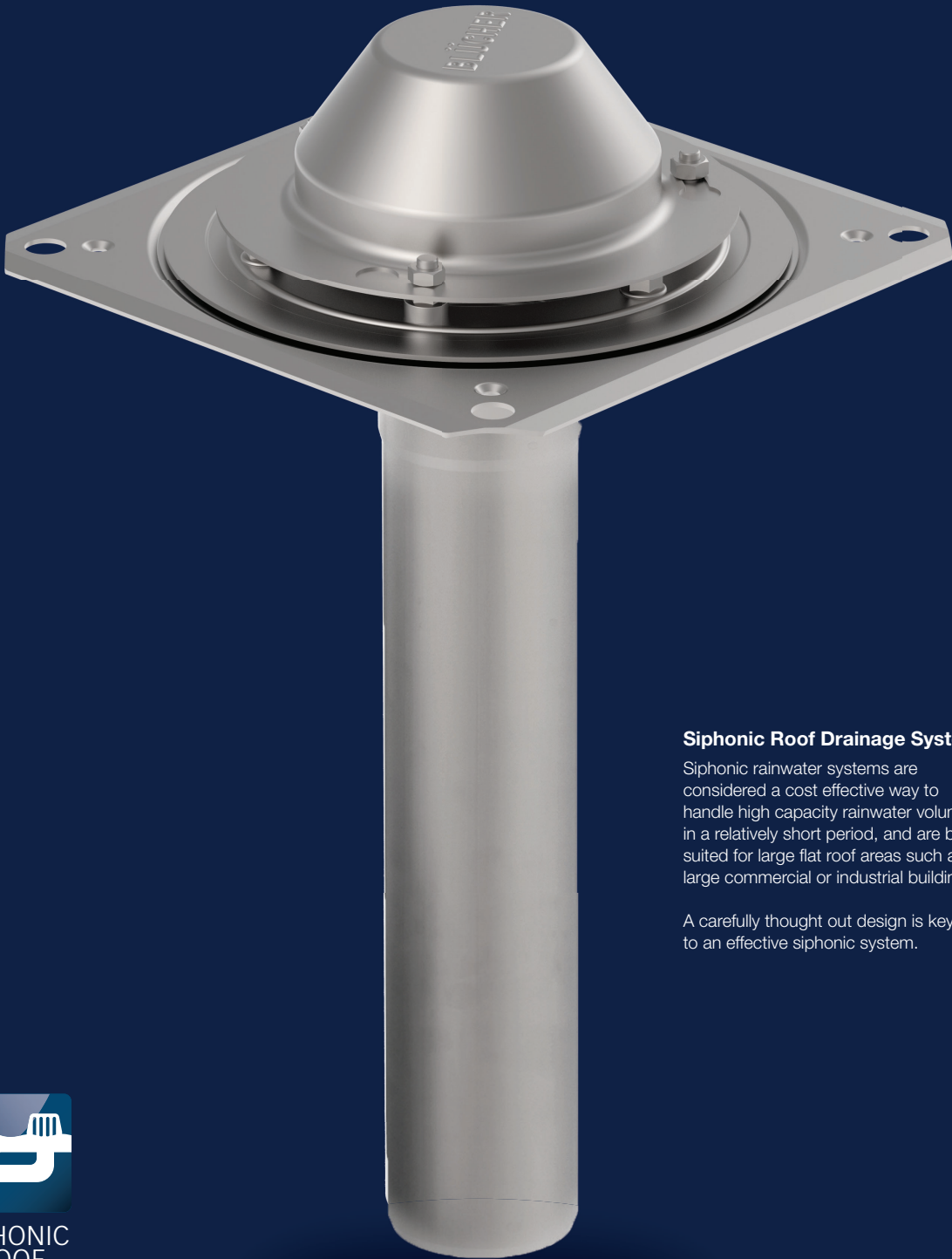
What is BLÜCHER Rainwater?

The BLÜCHER Rainwater program consists of various applications - roof, balcony, terraces, and façade systems. Through quality drainage solutions leading rainwater away, BLÜCHER is committed to the promise of "Keeping up the flow". Customers all over the world rely on our continuous know-how, dedicated service, and common sense. After being in the drainage industry for over five decades, know-how means knowing how at BLÜCHER. It means putting years of our knowledge about drainage to practical use and it means knowing how to stay ahead through investments in the newest product development, testing and production facilities.



BLÜCHER® SIPHONIC ROOF

- THE COST-EFFECTIVE HIGH CAPACITY SOLUTION



Siphonic Roof Drainage System

Siphonic rainwater systems are considered a cost effective way to handle high capacity rainwater volumes in a relatively short period, and are best suited for large flat roof areas such as large commercial or industrial buildings.

A carefully thought out design is key to an effective siphonic system.

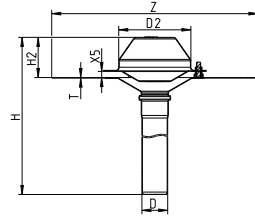
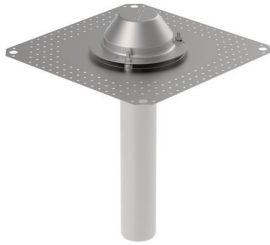


SIPHONIC
ROOF

for siphonic

ROOF DRAIN TYPE 401.20

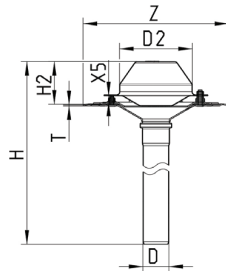
WITH FLANGE FOR BITUMEN



Type no.	EAN no.	D	Z	H	H2	D2	X5	T	Max Flow (l/s)
401.204.040	5705499132823	40	400x400	496	78	140	12	1	4.1
401.204.050	5705499132830	50	400x400	496	78	140	12	1	7.6
401.204.075	5705499132847	75	400x400	496	78	140	12	1	18.8
401.204.110	5705499139105	110	400x400	496	78	140	12	1	35.0
401.206.040	5705499141238	40	400x400	696	78	140	12	1	4.1
401.206.050	5705499141245	50	400x400	696	78	140	12	1	7.6
401.206.075	5705499141252	75	400x400	696	78	140	12	1	18.8
401.206.110	5705499141269	110	400x400	696	78	140	12	1	35.0

ROOF DRAIN TYPE 402.20

WITH CLAMPING FLANGE FOR SINGLE PLY MEMBRANE

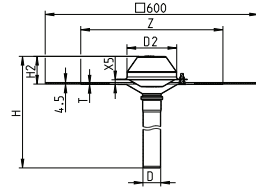
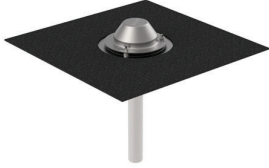


Type no.	EAN no.	D	Z	H	H2	D2	X5	T	Max Flow (l/s)
402.204.040	5705499132854	40	280x280	501	82	140	12	2	4.1
402.204.050	5705499132861	50	280x280	501	82	140	12	2	7.6
402.204.075	5705499132878	75	280x280	501	82	140	12	2	18.8
402.204.110	5705499139112	110	280x280	501	82	140	12	2	35.0
402.206.040	5705499132885	40	280x280	701	82	140	12	2	4.1
402.206.050	5705499132892	50	280x280	701	82	140	12	2	7.6
402.206.075	5705499132908	75	280x280	701	82	140	12	2	18.8
402.206.110	5705499139129	110	280x280	701	82	140	12	2	35.0

for siphonic

ROOF DRAIN TYPE 403.20

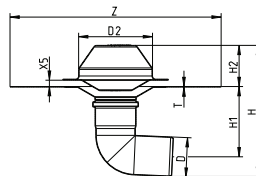
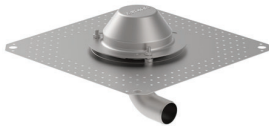
WITH FLANGE FOR BITUMEN AND PRE-MOUNTED BITUMEN COLLAR



Type no.	EAN no.	D	Z	H	H2	D2	X5	T	Max Flow (l/s)
403.204.040	5705499133172	40	400x400	496	78	140	12	1	4.1
403.204.050	5705499133189	50	400x400	496	78	140	12	1	7.6
403.204.075	5705499133196	75	400x400	496	78	140	12	1	18.8
403.204.110	5705499139136	110	400x400	503	85	140	19	1	35.0
403.206.040	5705499140361	40	400x400	696	78	140	12	1	4.1
403.206.050	5705499140378	50	400x400	696	78	140	12	1	7.6
403.206.075	5705499141528	75	400x400	696	78	140	12	1	18.8
403.206.110	5705499141535	110	400x400	703	85	140	19	1	35.0

ROOF DRAIN TYPE 401.200

WITH FLANGE FOR BITUMEN

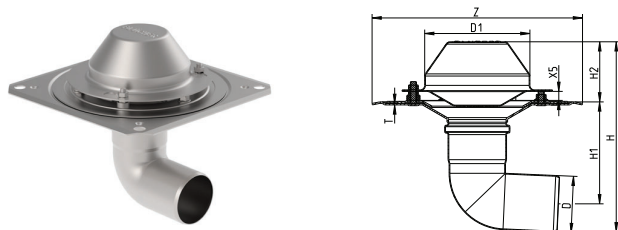


Type no.	EAN no.	D	Z	H	H1	H2	D2	X5	T	Max Flow (l/s)
401.200.040	5705499141191	40	400x400	210	112	78	140	12	1	4.1
401.200.050	5705499141207	50	400x400	221	118	78	140	12	1	7.6
401.200.075	5705499141214	75	400x400	248	133	78	140	12	1	18.8
401.200.110	5705499141221	110	400x400	291	151	85	140	19	1	35.0

for siphonic

ROOF DRAIN TYPE 402.200

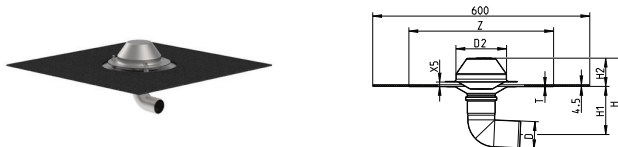
WITH CLAMPING FLANGE FOR SINGLE PLY MEMBRANE



Type no.	EAN no.	D	Z	H	H1	H2	D2	X5	T	Max Flow (l/s)
402.200.040	5705499141313	40	280x280	214	115	80	140	12	2	4.1
402.200.050	5705499141320	50	280x280	226	121	80	140	12	2	7.6
402.200.075	5705499141337	75	280x280	253	136	80	140	12	2	18.8
402.200.110	5705499141344	110	280x280	289	154	81	140	12	2	35.0

ROOF DRAIN TYPE 403.200

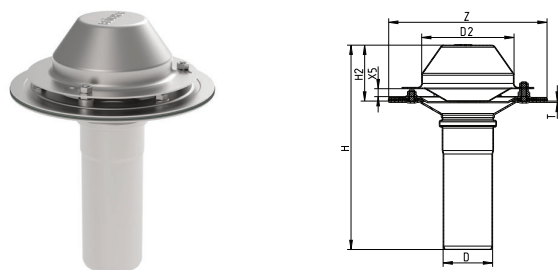
WITH FLANGE FOR BITUMEN AND PRE-MOUNTED BITUMEN COLLAR



Type no.	EAN no.	D	Z	H	H1	H2	D2	X5	T	Max Flow (l/s)
403.200.040	5705499140385	40	400x400	210	112	78	140	12	1	4.1
403.200.050	5705499140446	50	400x400	221	118	78	140	12	1	7.6
403.200.075	5705499141542	75	400x400	248	133	78	140	12	1	18.8
403.200.110	5705499141559	110	400x400	284	151	78	140	19	1	35.0

ROOF DRAIN TYPE 404.202

ROOF DRAIN FOR GUTTERS AND CHANNELS

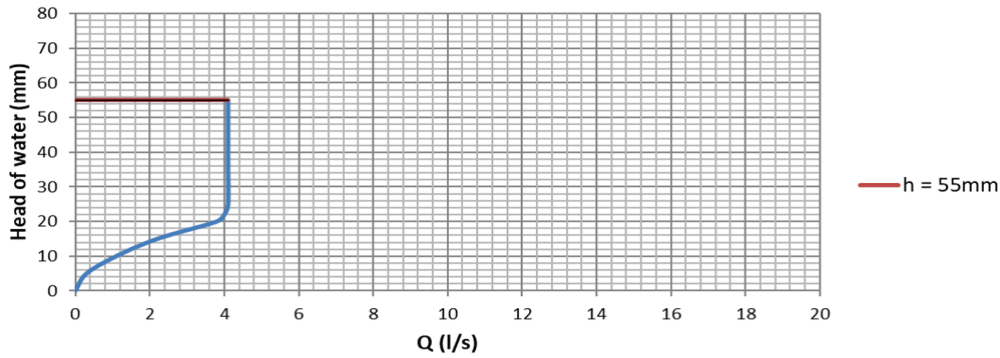


Type no.	EAN no.	D	Z	H	H2	D2	X5	T	Max Flow (l/s)
404.202.040	5705499001143	40	Ø240	312	85	140	12	2	4,1
404.202.050	5705499001150	50	Ø240	309	85	140	12	2	7,6
404.202.075	5705499001167	75	Ø240	310	85	140	12	2	18,8
404.202.110	5705499001174	110	Ø240	307	85	140	12	2	35,0

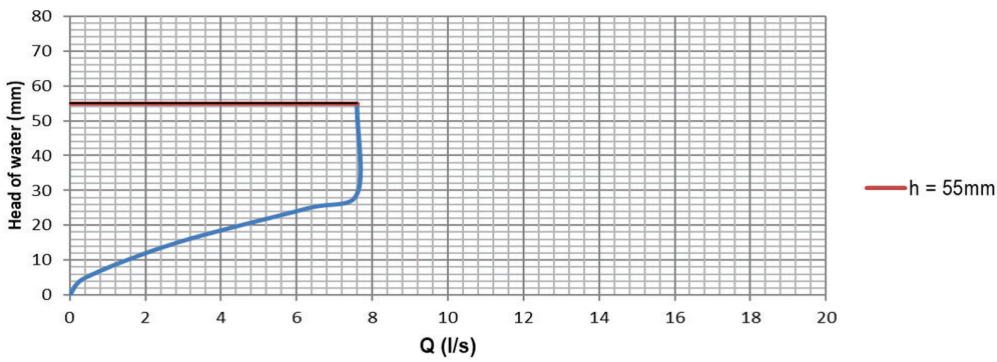
FLOW RATES

TYPE 401, 402, 403 & 404

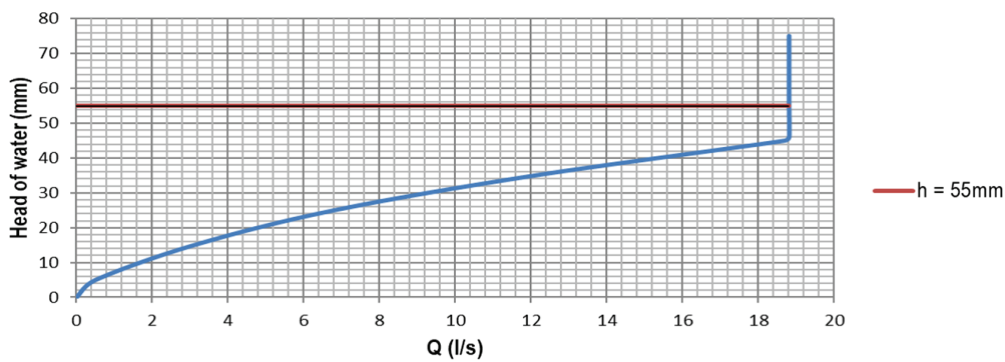
BLÜCHER® ROOF DRAIN - SIPHONIC OD40 MM - TESTING ACCORDING TO EN 1253



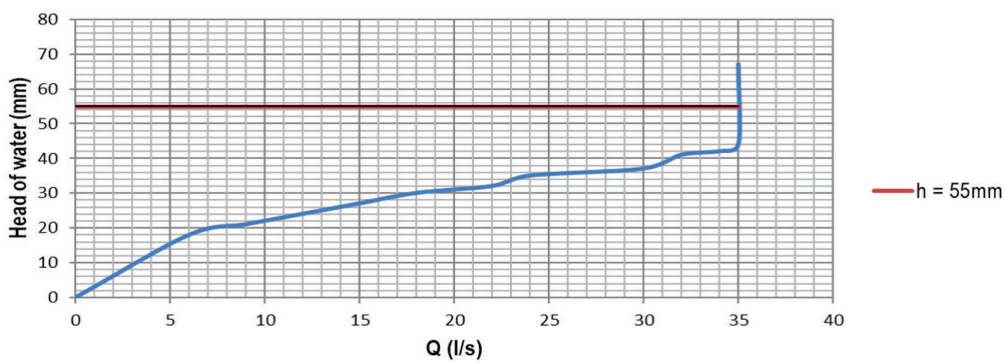
BLÜCHER® ROOF DRAIN - SIPHONIC OD50 MM



BLÜCHER® ROOF DRAIN - SIPHONIC OD75 MM



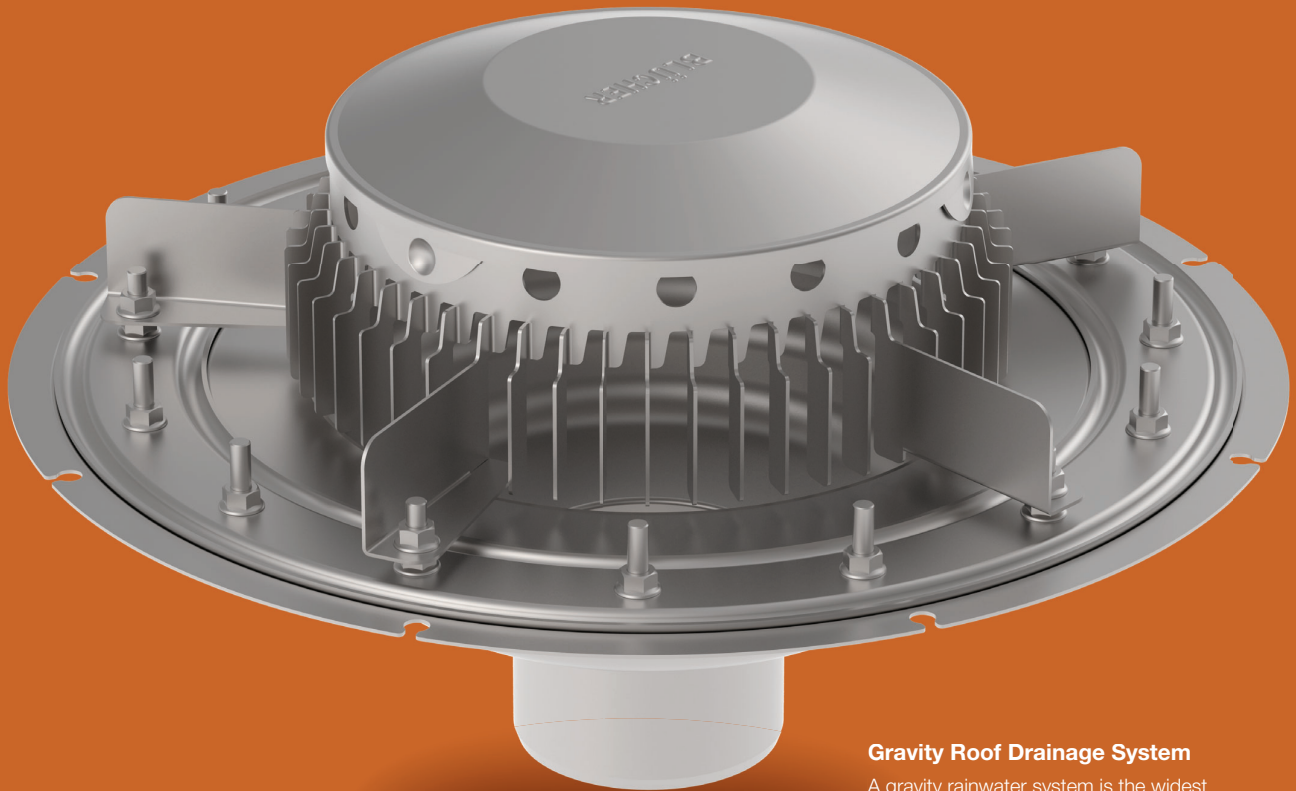
BLÜCHER® ROOF DRAIN - SIPHONIC OD110 MM





BLÜCHER® GRAVITY ROOF

- BE READY FOR HEAVY RAIN WITH BLÜCHER® GRAVITY ROOF DRAINS



Gravity Roof Drainage System

A gravity rainwater system is the widest and most diverse rainwater system used in building drainage today. With the ability to serve multiple roof levels from the same system if required, and being the underpinning drainage solution for other applications such as green roof, Blue Roof and even rainwater harvesting; it is easy to see why a gravity system is still the preferred solution for rainwater drainage today.

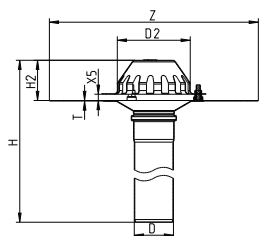
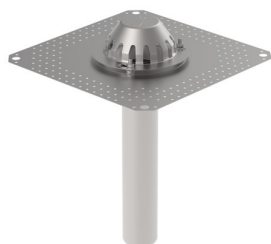


GRAVITY
ROOF

for gravity

ROOF DRAIN TYPE 401.10

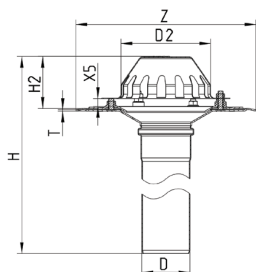
WITH FLANGE FOR BITUMEN



Type no.	EAN no.	D	Z	H	H2	D2	X5	T	EN 1253	EN 12056
									Max Flow (l/s)	Max Flow (l/s)
401.104.050	5705499132731	50	400x400	495	77	140	12	1	4.8	1.7
401.104.075	5705499132748	75	400x400	495	77	140	12	1	5.0	5.0
401.104.110	5705499132755	110	400x400	495	77	140	12	1	5.1	13.8
401.106.050	5705499141160	50	400x400	695	77	140	12	1	4.8	1.7
401.106.075	5705499141177	75	400x400	695	77	140	12	1	5.0	5.0
401.106.110	5705499141184	110	400x400	695	77	140	12	1	5.1	13.8

ROOF DRAIN TYPE 402.10

WITH CLAMPING FLANGE FOR SINGLE PLY MEMBRANE



Type no.	EAN no.	D	Z	H	H2	D2	X5	T	EN 1253	EN 12056
									Max Flow (l/s)	Max Flow (l/s)
402.104.050	5705499132762	50	280x280	501	81	140	12	2	4.8	1.7
402.104.075	5705499132779	75	280x280	501	81	140	12	2	5.0	5.0
402.104.110	5705499132786	110	280x280	501	81	140	12	2	5.1	13.8
402.106.050	5705499132793	50	280x280	701	81	140	12	2	4.8	1.7
402.106.075	5705499132809	75	280x280	701	81	140	12	2	5.0	5.0
402.106.110	5705499132816	110	280x280	701	81	140	12	2	5.1	13.8

Flow Rate

Applies to all gravity tables.

All flow rates are in liters per second.

All drains are flow tested according to EN 1253.

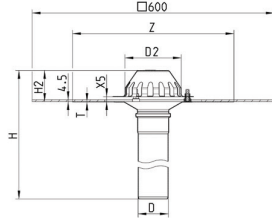
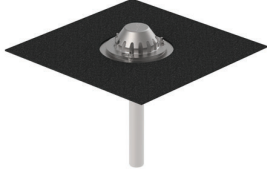
Vertical pipe capacity according to EN 12056 at 33% full.

For information on horizontal flow capacity, please see the table on page 17-18.

for gravity

ROOF DRAIN TYPE 403.10

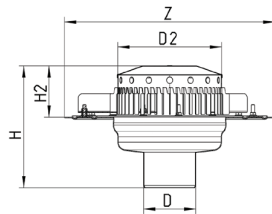
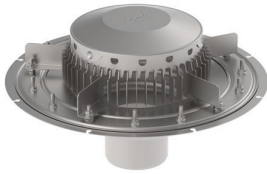
WITH FLANGE FOR BITUMEN AND PRE-MOUNTED BITUMEN COLLAR



Type no.	EAN no.	D	Z	H	H2	D2	X5	T	EN 1253	EN 12056
									Max Flow (l/s)	Max Flow (l/s)
403.104.050	5705499133141	50	400x400	495	77	140	12	1	4.8	1.7
403.104.075	5705499133158	75	400x400	495	77	140	12	1	5.0	5.0
403.104.110	5705499133165	110	400x400	495	77	140	12	1	5.1	13.8
403.106.050	5705499133394	50	400x400	695	77	140	12	1	4.8	1.7
403.106.075	5705499133400	75	400x400	695	77	140	12	1	5.0	5.0
403.106.110	5705499133417	110	400x400	695	77	140	12	1	5.1	13.8

ROOF DRAIN TYPE 408.101

WITH CLAMPING FLANGE FOR BITUMEN AND SINGLE PLY MEMBRANE



Type no.	EAN no.	D	Z	H	H2	D2	EN 1253	EN 12056
							Max Flow (l/s)	Max Flow (l/s)
408.101.075	5705499139983	75	507	276	123	250	10.8	5.0
408.101.110	5705499139990	110	507	285	123	250	10.9	13.8
408.101.125	5705499139013	125	507	293	123	250	14.1	17.4
408.101.160	5705499139020	160	507	303	123	250	14.3	37.5

Flow Rate

Applies to all gravity tables.

All flow rates are in liters per second.

All drains are flow tested according to EN 1253.

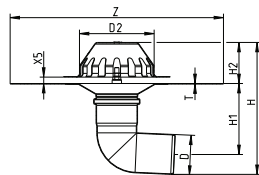
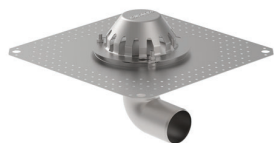
Vertical pipe capacity according to EN 12056 at 33% full.

For information on horizontal flow capacity, please see the table on page 17-18.

for gravity

ROOF DRAIN TYPE 401.100

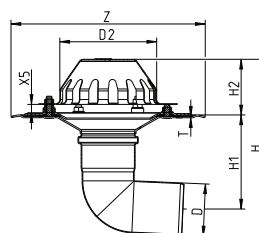
WITH FLANGE FOR BITUMEN



Type no.	EAN no.	D	Z	H	H1	H2	D2	X5	T	Max Flow (l/s)
401.100.050	5705499141139	50	400x400	220	118	77	140	12	1	4.8
401.100.075	5705499141146	75	400x400	247	133	77	140	12	1	5.0
401.100.110	5705499141153	110	400x400	283	151	77	140	12	1	5.1

ROOF DRAIN TYPE 402.100

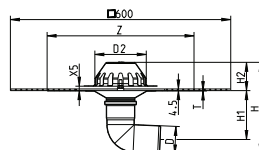
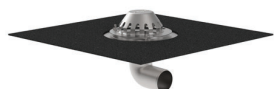
WITH CLAMPING FLANGE FOR SINGLE PLY MEMBRANE



Type no.	EAN no.	D	Z	H	H1	H2	D2	X5	T	Max Flow (l/s)
402.100.050	5705499133363	50	280x280	186	81	81	140	12	2	4.8
402.100.075	5705499133370	75	280x280	210	93	81	140	12	2	5.0
402.100.110	5705499133387	110	280x280	235	100	81	140	12	2	5.1

ROOF DRAIN TYPE 403.100

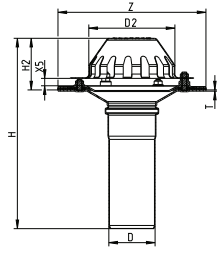
WITH FLANGE FOR BITUMEN AND PRE-MOUNTED BITUMEN COLLAR



Type no.	EAN no.	D	Z	H	H1	H2	D2	X5	T	Max Flow (l/s)
403.100.050	5705499141498	50	400x400	220	118	77	140	12	1	4.8
403.100.075	5705499141504	75	400x400	247	133	77	140	12	1	5.0
403.100.110	5705499141511	110	400x400	283	151	77	140	12	1	5.1

for gravity

ROOF DRAIN TYPE 404.102



Type no.	EAN no.	D	Z	H	H2	D2	X5	T	EN 1253	EN 12056
									Max Flow (l/s)	Max Flow (l/s)
404.102.050	5705499001112	50	Ø240	308	84	140	12	2	4.8	1.7
404.102.075	5705499001129	75	Ø240	309	84	140	12	2	5.0	5.0
404.102.110	5705499001136	110	Ø240	306	84	140	12	2	5.1	13.8

Flow Rate

Applies to all gravity tables.

All flow rates are in liters per second.

All drains are flow tested according to EN 1253.

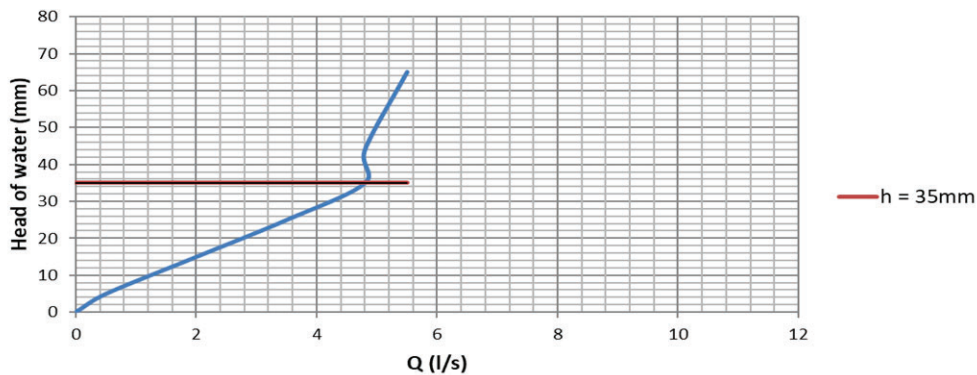
Vertical pipe capacity according to EN 12056 at 33% full.

For information on horizontal flow capacity, please see the table on page 17-18.

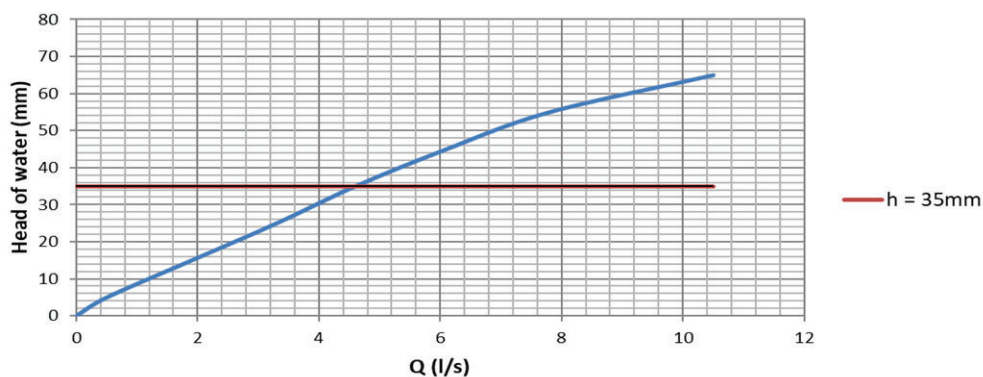
FLOW RATES

TYPE 401, 402, 403 & 404

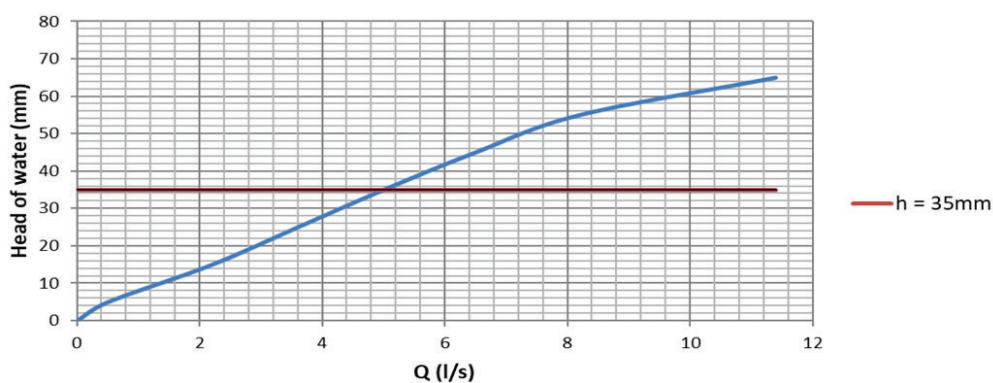
BLÜCHER® ROOF DRAIN - GRAVITY OD50 MM - TESTING ACCORDING TO EN 1253



BLÜCHER® ROOF DRAIN - GRAVITY OD75 MM

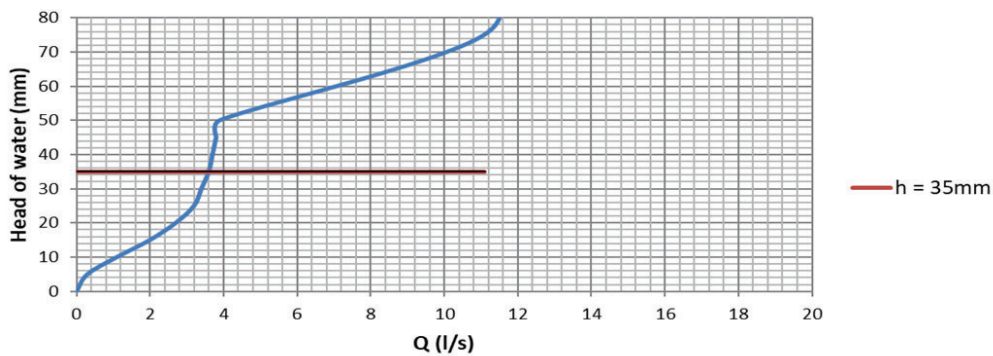


BLÜCHER® ROOF DRAIN - GRAVITY OD110 MM



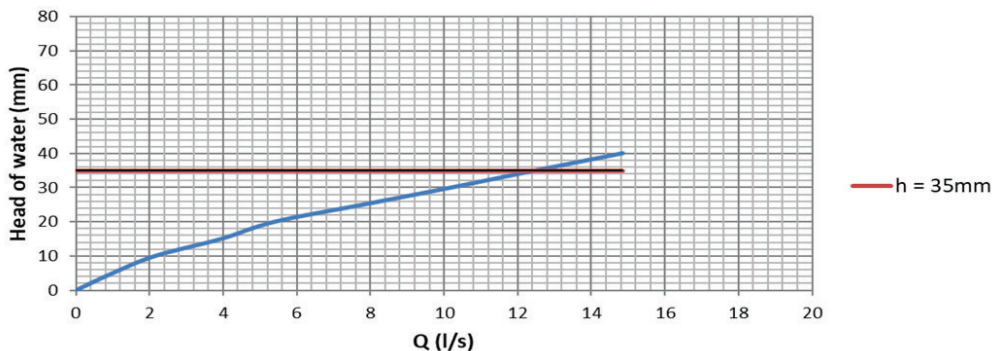
TYPE 405

BLÜCHER® ROOF DRAIN - GRAVITY OD75 MM

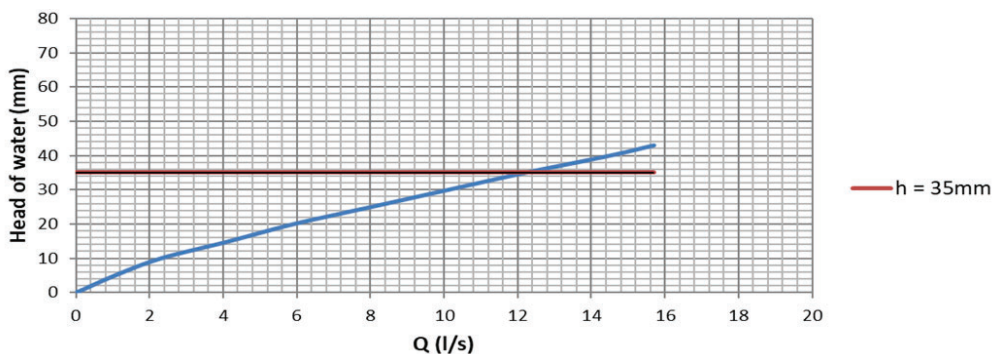


TYPE 408

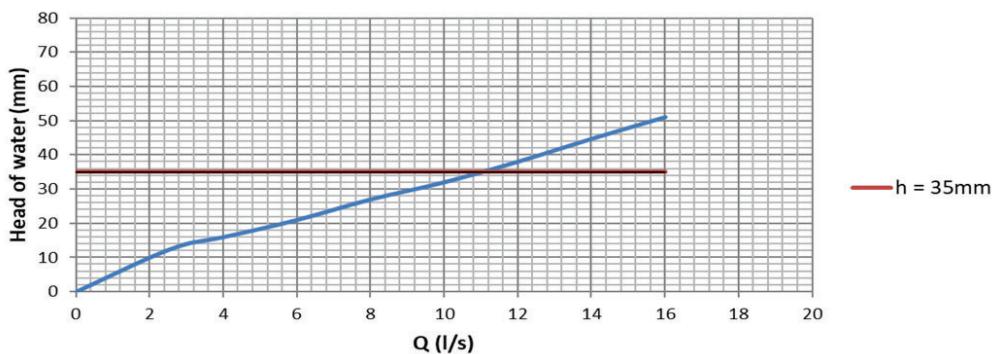
BLÜCHER® ROOF DRAIN - GRAVITY OD75 MM



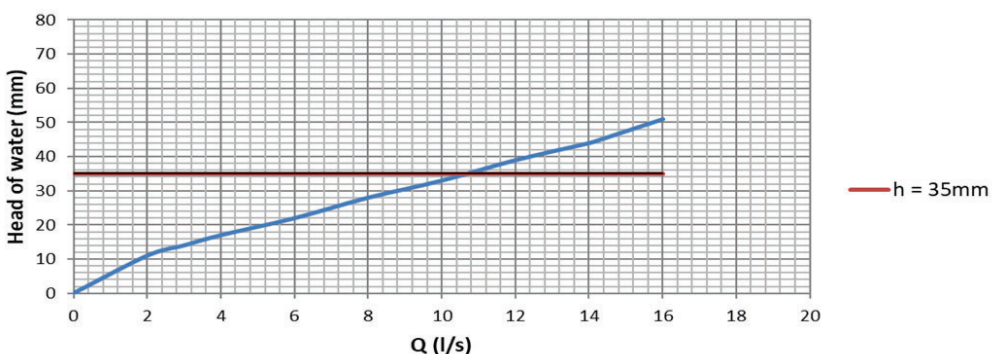
BLÜCHER® ROOF DRAIN - GRAVITY OD110 MM



BLÜCHER® ROOF DRAIN - GRAVITY OD125 MM

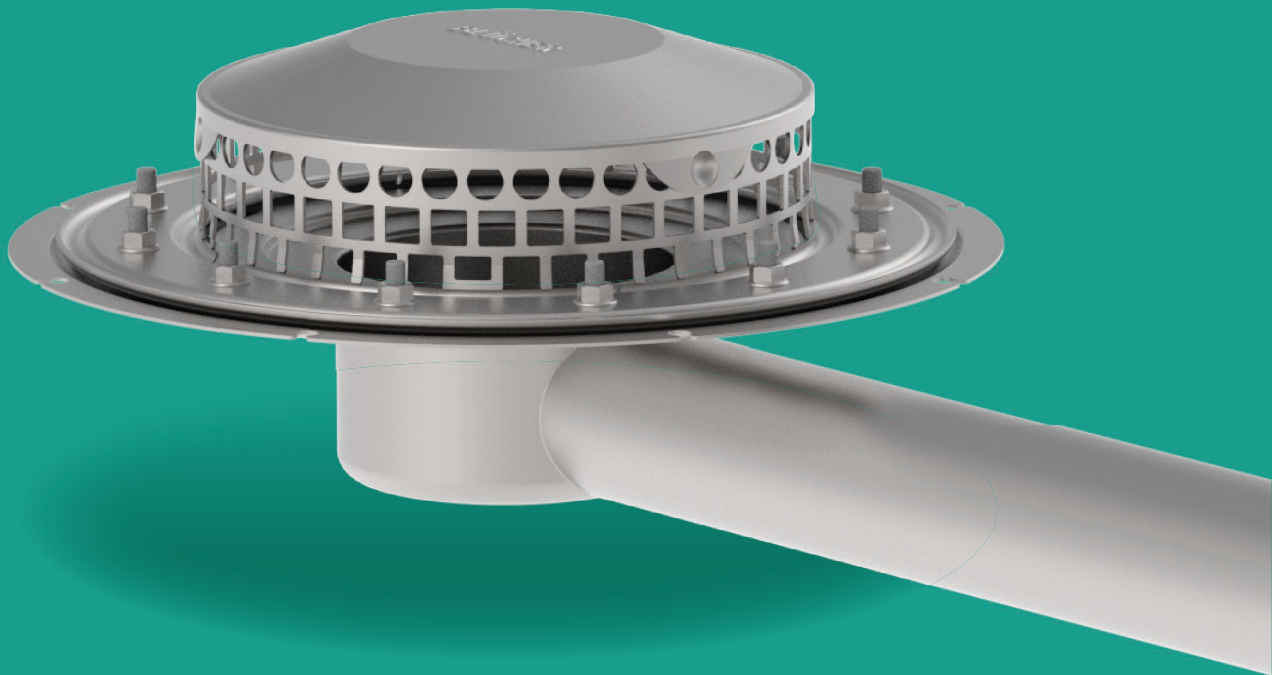


BLÜCHER® ROOF DRAIN - GRAVITY OD160 MM



BLÜCHER® PARAPET DRAINS

- TO BE UTILISED AS A PRIMARY DRAINAGE SOLUTION OR ACT AS A SECONDARY EMERGENCY OVERFLOW



Parapet Roof Drainage System

Many roof areas have an outer edge detail called a parapet wall, which can have multiple uses, including the prevention of rainwater spilling from the roof onto an area directly below.

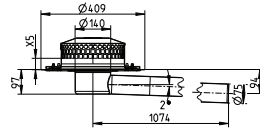
Drainage from roof areas with parapet walls typically route through the parapet wall to an external downpipe system. The advantage to an external system is the avoidance of taking rainwater into a building where there is limitations within the building.



for gravity

DRAIN TYPE 405

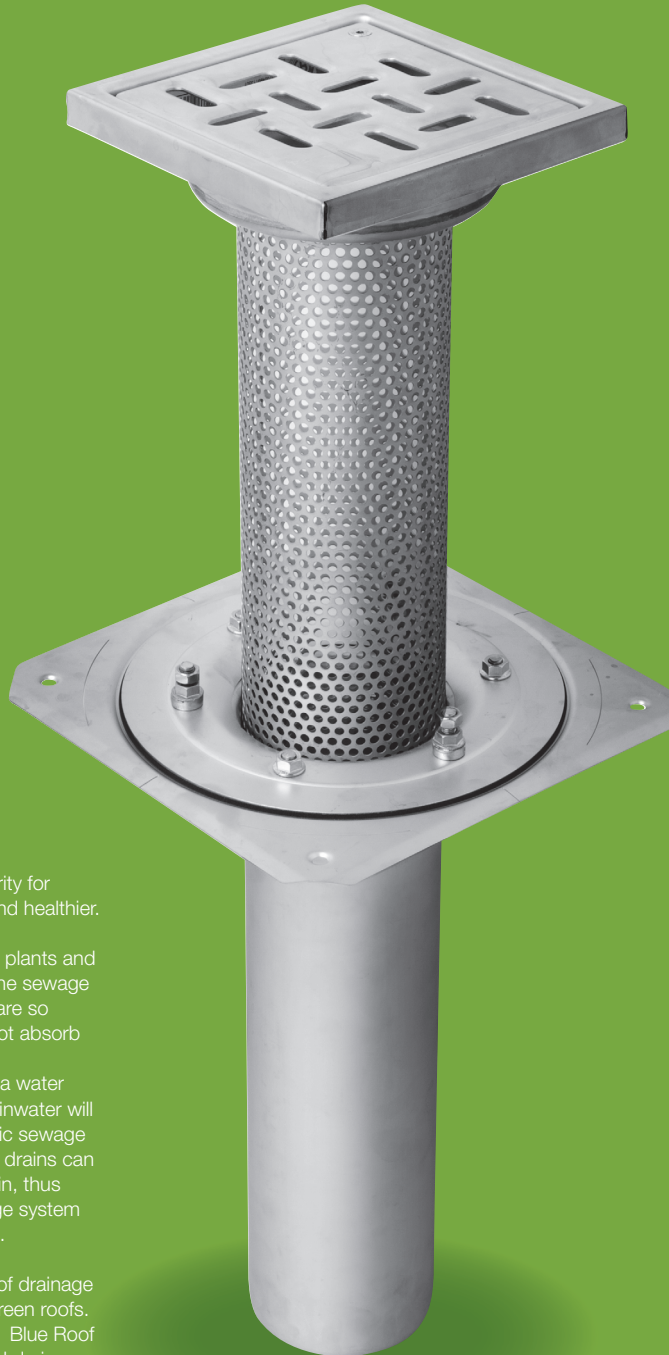
WITH CLAMPING FLANGE FOR BITUMEN AND SINGLE PLY MEMBRANE



Type no.	EAN no.	X5	Max Flow (l/s)
405.101.075	5705499141351	0	3.6
405.131.075	5705499141368	35	7.8
405.141.075	5705499141375	45	7.8
405.151.075	5705499141382	55	7.8

BLÜCHER® GREEN ROOF

- FULL RANGE OF DRAINAGE SOLUTIONS FOR GREEN ROOFS



BLÜCHER® Green Roof Drainage System

Green roofs enjoy great popularity for making cities greener, cooler, and healthier.

Not least, the water buffering in plants and soil reduces the peak load on the sewage system – unless the rain loads are so heavy that plants and soil cannot absorb any more water.

If the green roof does not have a water retention system, the excess rainwater will flow unrestrictedly into the public sewage system. However, the right roof drains can retain water in case of heavy rain, thus reducing the load on the sewage system within the roof drain regulations.

BLÜCHER® offers a full range of drainage solutions in stainless steel for green roofs. The extensive range comprises Blue Roof water retention systems, special drains for draining soil through gravel, and direct gravity systems.

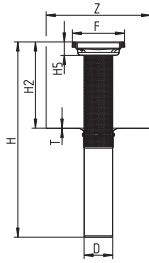
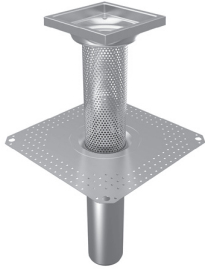


GREEN
ROOF

for gravity

ROOF DRAIN TYPE 401.170

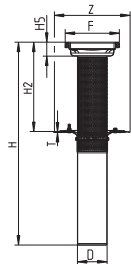
WITH FLANGE FOR BITUMEN



Type no.	EAN no.	D	F	Z	H	H2	H5	T	Max Flow (l/s)
401.170.110	5705499134872	110	200x200	400x400	748	330	51	1	5.1
401.170.160	5705499134889	160	200x200	400x400	748	330	40	2	14.1

ROOF DRAIN TYPE 402.170

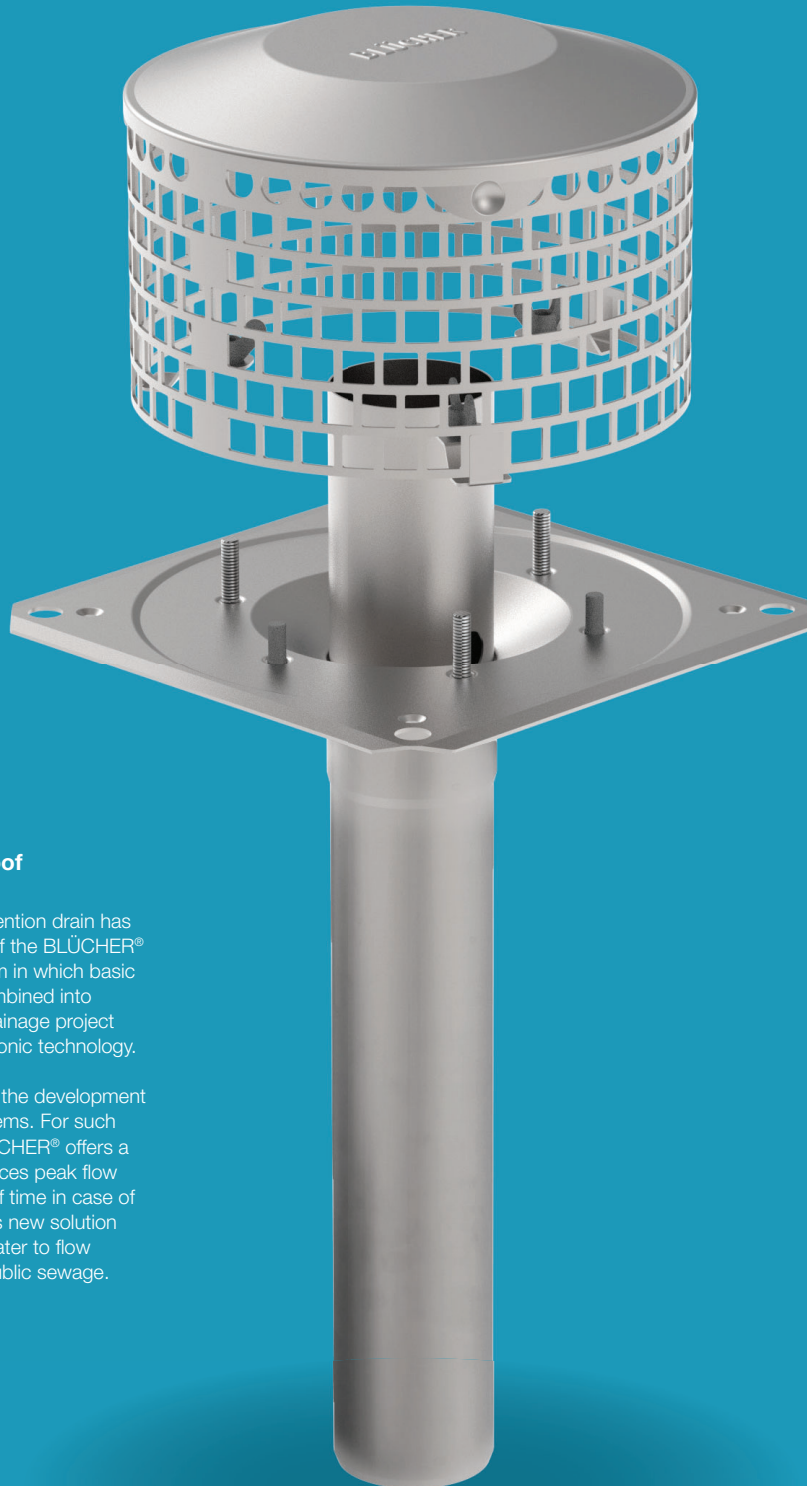
WITH CLAMPING FLANGE FOR SINGLE PLY MEMBRANE



Type no.	EAN no.	D	F	Z	H	H2	H5	T	Max Flow (l/s)
402.170.110	5705499134896	110	200x200	280x280	750	330	51	2	5.1

BLÜCHER® BLUE ROOF

- CONTROL YOUR FUTURE FLOW WITH BLÜCHER® BLUE ROOF



BLÜCHER® Blue Roof Drainage System

The Blue Roof water retention drain has been designed as part of the BLÜCHER® modular drainage system in which basic components can be combined into solutions for any roof drainage project based on gravity or siphonic technology.

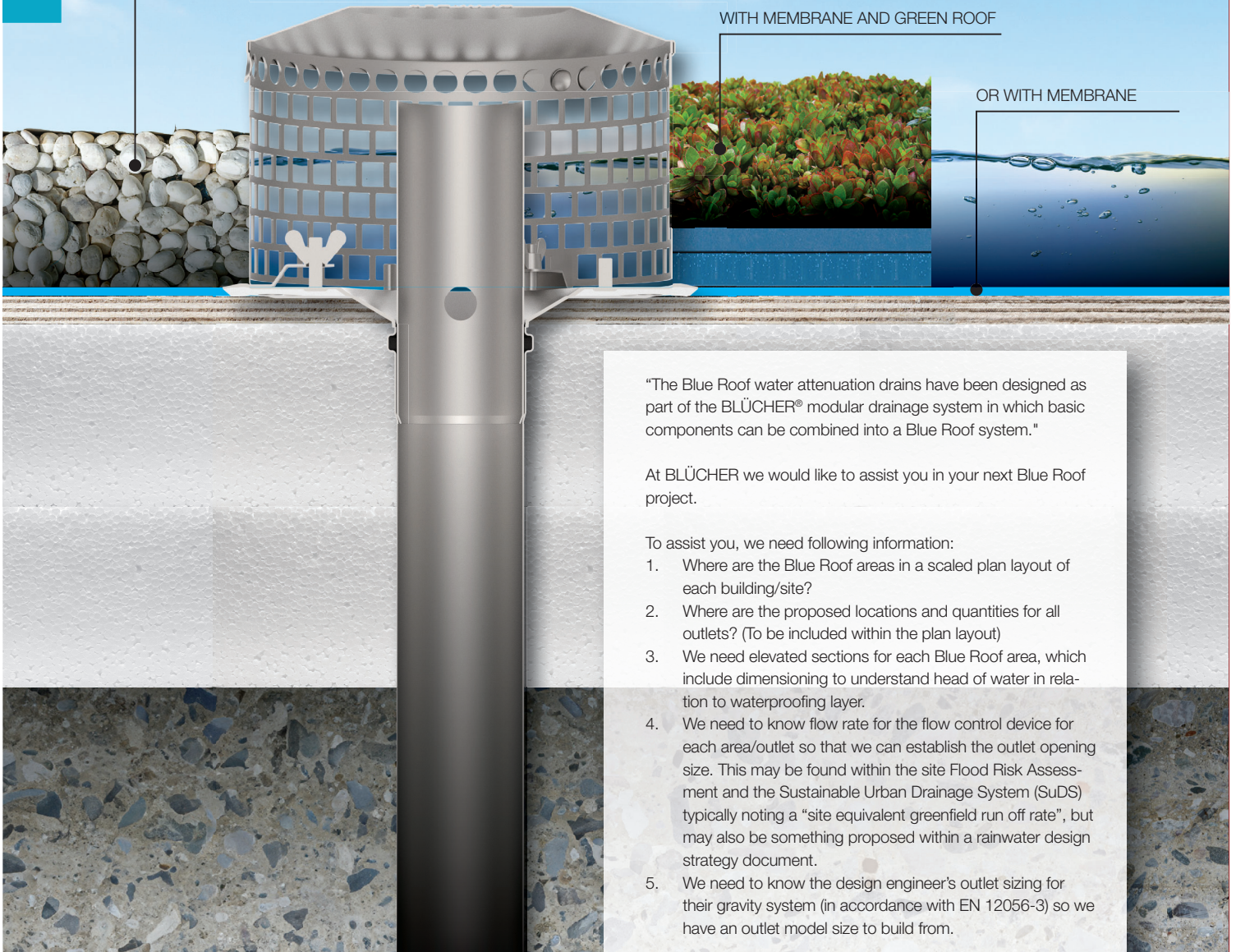
Recent years have seen the development of several retention systems. For such a retention system, BLÜCHER® offers a new solution which reduces peak flow and increases the run-off time in case of storm water. Further, this new solution will prevent additional water to flow unrestrictedly into the public sewage.



WITH MEMBRANE AND GRAVEL

WITH MEMBRANE AND GREEN ROOF

OR WITH MEMBRANE



"The Blue Roof water attenuation drains have been designed as part of the BLÜCHER® modular drainage system in which basic components can be combined into a Blue Roof system."

At BLÜCHER we would like to assist you in your next Blue Roof project.

To assist you, we need following information:

1. Where are the Blue Roof areas in a scaled plan layout of each building/site?
2. Where are the proposed locations and quantities for all outlets? (To be included within the plan layout)
3. We need elevated sections for each Blue Roof area, which include dimensioning to understand head of water in relation to waterproofing layer.
4. We need to know flow rate for the flow control device for each area/outlet so that we can establish the outlet opening size. This may be found within the site Flood Risk Assessment and the Sustainable Urban Drainage System (SuDS) typically noting a "site equivalent greenfield run off rate", but may also be something proposed within a rainwater design strategy document.
5. We need to know the design engineer's outlet sizing for their gravity system (in accordance with EN 12056-3) so we have an outlet model size to build from.

BLÜCHER will return with the following information.

1. Identification for each roof outlet with a reference to each specific roof area, produced on a plan layout where possible.
2. A reference table aligning each roof outlet to a location within the plan layout. The table will include the outlet product number, size of the roof outlet, dimensions of the standpipe overflow piece, flow control aperture size and flow rate with specified head.

Let us help you with your next BLUE ROOF project!

BLÜCHER® EMERGENCY DRAIN

- FOR ROOF WITH GRAVITY DRAINAGE



BLÜCHER® Emergency Drainage System

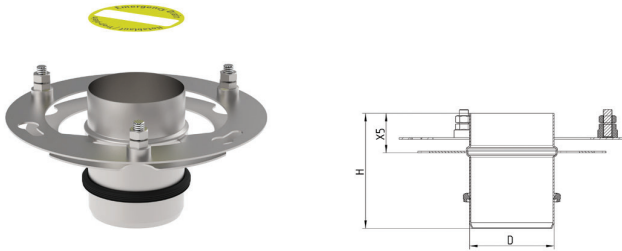
There is always a need to safeguard your building and rainwater system with the consideration for emergency back-up. A well thought out rainwater drainage system design should always consider the possibility of an outlet becoming blocked or an unusually high peak storm downpour that could overload the primary system. Additional outlets with a raised frame/ring can assist with managing these scenarios and offer reassurance the rainwater system can still do its job. And the building will be safe from rainwater.



EMERGENCY DRAIN

EMERGENCY DRAIN STAND PIPE TYPE 400.100

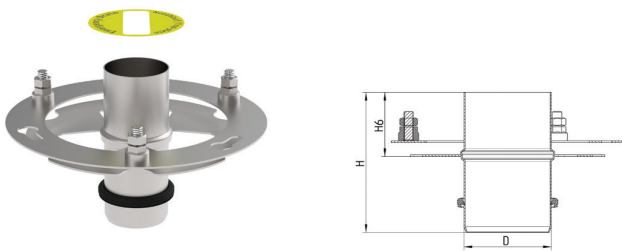
FOR ROOF WITH GRAVITY DRAINAGE



Type no.	EAN no.	D	H	X5	Max Flow (l/s)
400.100.050	5705499132991	50	105	35	5.7
400.100.075	5705499133004	75	102	35	13.7
400.100.110	5705499133011	110	107	35	14.0

EMERGENCY DRAIN STAND PIPE TYPE 400.200

FOR ROOF WITH SIPHONIC DRAINAGE



Type no.	EAN no.	D	H	X5	Max Flow (l/s)
400.200.050	5705499133028	50	123	55	5.7
400.200.075	5705499133035	75	120	55	13.4
400.200.110	5705499139440	110	127	55	14.0

DRAIN TYPE 405

WITH CLAMPING FLANGE FOR BITUMEN AND SINGLE PLY MEMBRANE

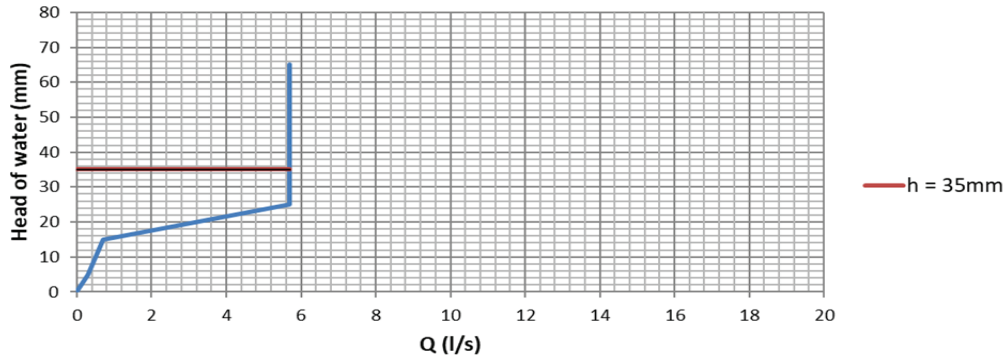


Type no.	EAN no.	X5
405.131.075	5705499141368	35
405.141.075	5705499141375	45
405.151.075	5705499141382	55

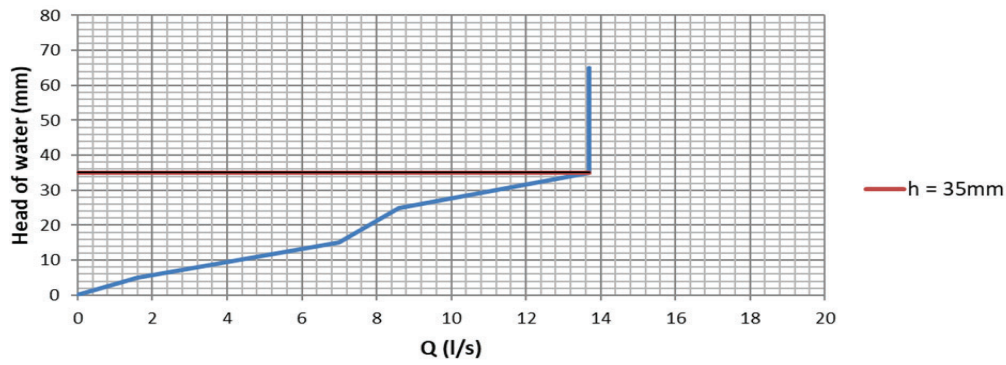
FLOW RATES

TYPE 400.100.XXX

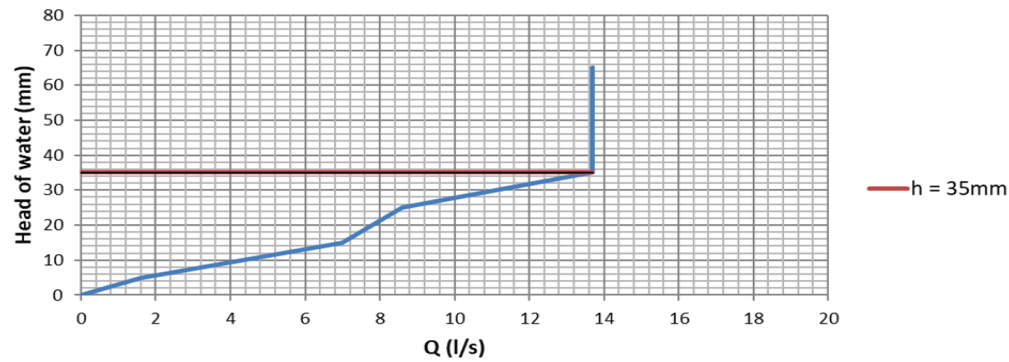
BLÜCHER® EMERGENCY DRAIN - OD50 MM - TESTING ACCORDING TO EN 1253



BLÜCHER® EMERGENCY DRAIN - OD75 MM

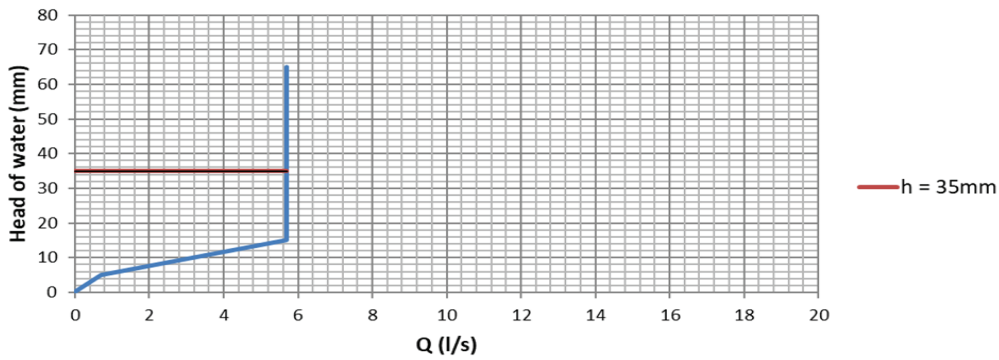


BLÜCHER® EMERGENCY DRAIN - OD110 MM

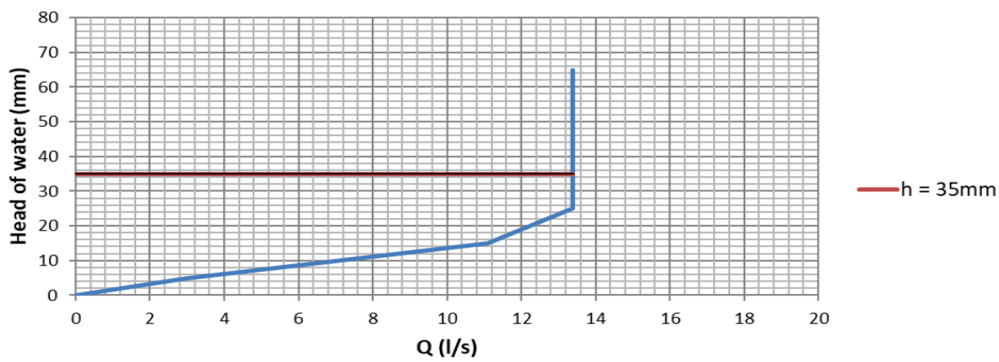


TYPE 400.200.XXX

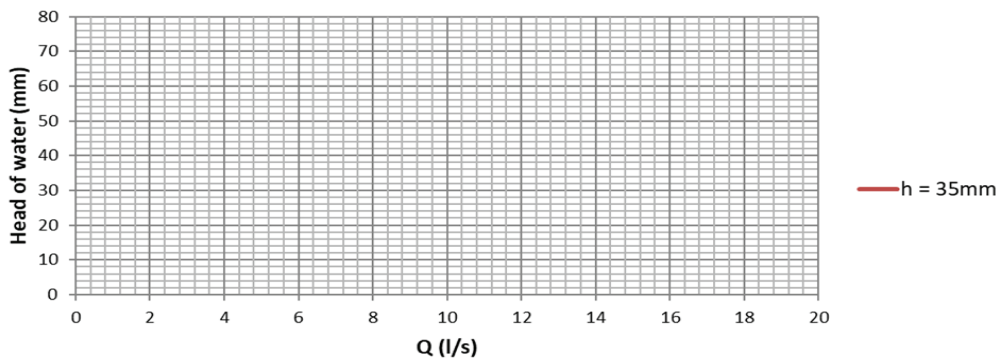
BLÜCHER® EMERGENCY DRAIN - OD50 MM



BLÜCHER® EMERGENCY DRAIN - OD75 MM

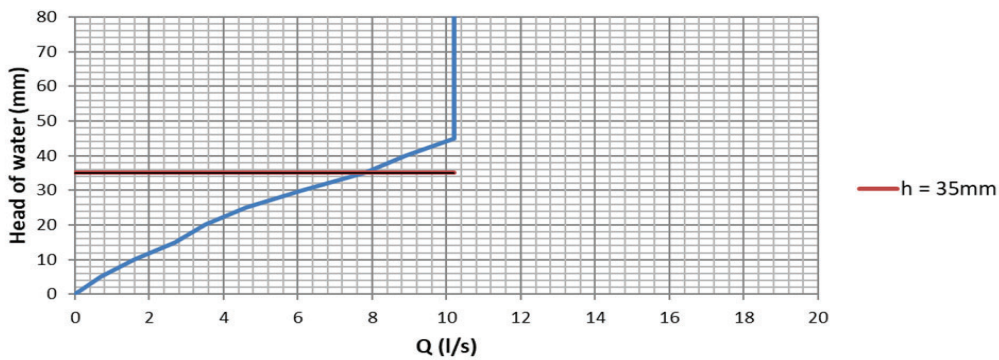


BLÜCHER® EMERGENCY DRAIN - OD110 MM



TYPE 405.035.000

BLÜCHER® EMERGENCY DRAIN - OD75 MM

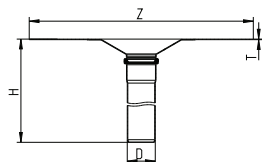


LOWER PARTS



LOWER PART FOR ROOF DRAIN TYPE 401.004

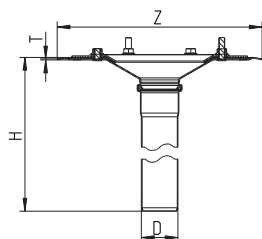
WITH FLANGE FOR BITUMEN



Type no.	EAN no.	D	Z	H	T
401.004.040	5705499132915	40	400x400	418	1
401.004.050	5705499132922	50	400x400	418	1
401.004.075	5705499132939	75	400x400	418	1
401.004.110	5705499132946	110	400x400	418	1
401.004.125	5705499140439	125	400x400	418	2
401.004.160	5705499134513	160	400x400	418	2

LOWER PART FOR ROOF DRAIN TYPE 402.004

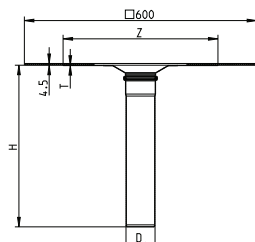
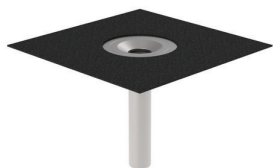
WITH CLAMPING FLANGE FOR SINGLE PLY MEMBRANE



Type no.	EAN no.	D	Z	H	T
402.004.040	5705499132953	40	280x280	420	2
402.004.050	5705499132960	50	280x280	420	2
402.004.075	5705499132977	75	280x280	420	2
402.004.110	5705499132984	110	280x280	420	2

LOWER PART FOR ROOF DRAIN TYPE 403.004

WITH FLANGE FOR BITUMEN AND PRE-MOUNTED BITUMEN COLLAR

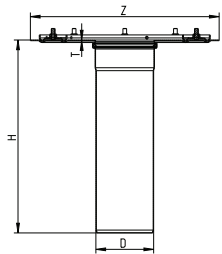


Type no.	EAN no.	D	Z	H	T
403.004.040	5705499141436	40	400x400	418	1
403.004.050	5705499141443	50	400x400	418	1
403.004.075	5705499141450	75	400x400	418	1
403.004.110	5705499141467	110	400x400	418	1
403.004.125	5705499141474	125	400x400	418	1
403.004.160	5705499141481	160	400x400	418	1

Lower parts for roof drains

LOWER PART FOR ROOF DRAIN TYPE 408.004

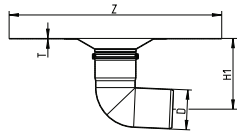
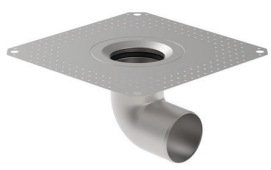
WITH CLAMPING FLANGE FOR SINGLE PLY MEMBRANE



Type no.	EAN no.	D	Z	H	T
408.004.125	5705499141566	125	Ø409	418	1.5
408.004.160	5705499141573	160	Ø409	418	1.5

LOWER PART FOR ROOF DRAIN TYPE 401.000

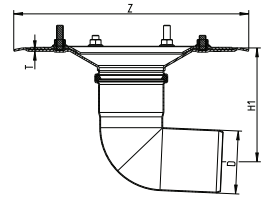
WITH FLANGE FOR BITUMEN



Type no.	EAN no.	D	Z	H1	T
401.000.040	5705499141078	40	400x400	112	1
401.000.050	5705499141085	50	400x400	118	1
401.000.075	5705499141092	75	400x400	133	1
401.000.110	5705499141108	110	400x400	151	1
401.000.125	5705499141115	125	400x400	158	2
401.000.160	5705499141122	160	400x400	182	2

LOWER PART FOR ROOF DRAIN TYPE 402.000

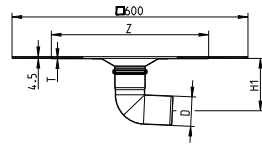
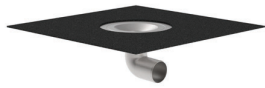
WITH CLAMPING FLANGE FOR SINGLE PLY MEMBRANE



Type no.	EAN no.	D	Z	H1	T
402.000.040	5705499141276	40	280x280	115	2
402.000.050	5705499141283	50	280x280	121	2
402.000.075	5705499141290	75	280x280	136	2
402.000.110	5705499141306	110	280x280	154	2

LOWER PART FOR ROOF DRAIN TYPE 403.000

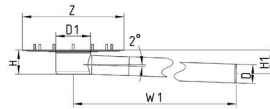
WITH FLANGE FOR BITUMEN AND PRE-MOUNTED BITUMEN COLLAR



Type no.	EAN no.	D	Z	H1	T
403.000.040	5705499141399	40	400x400	112	1
403.000.050	5705499141405	50	400x400	118	1
403.000.075	5705499141412	75	400x400	133	1
403.000.110	5705499141429	110	400x400	151	1

LOWER PART TYPE 405

WITH CLAMPING FLANGE FOR BITUMEN AND SINGLE PLY MEMBRANE



Type no.	EAN no.	D	D1	Z	H	H1	W1
405.000.075	5705499139037	75	140	409	97	94	1074

Fits leaf guards for parapet drains type 405.

BLÜCHER® BALCONY DRAIN

- PROTECT YOUR HOME WITH BLÜCHER® BALCONY DRAINS



BLÜCHER® Balcony Drainage System

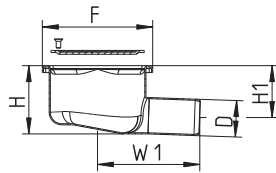
Balcony drains are a critical component of any well-designed balcony, helping to prevent drainage related problems and ensuring the longevity of the balcony area.

If you have needs for bespoke solutions or need more detailed information, please feel free to ask.



BALCONY DRAIN SQUARE, 100X100 TYPE 182

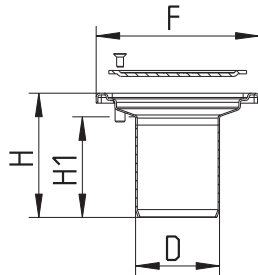
WITH SCREW LOCK



Type no.	EAN no.	D	F	H	H1	W1
182.105.032	5705499120370	32	97x97	60	46	90

BALCONY DRAIN SQUARE, 100X100 TYPE 183

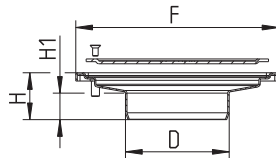
WITH SCREW LOCK



Type no.	EAN no.	D	F	H	H1
183.101.040	5705499120295	40	97x97	62	47
183.101.050	5705499120301	50	97x97	74	60
183.101.075	5705499120318	75	97x97	26	20

BALCONY DRAIN SQUARE, 150X150 TYPE 183

WITH SCREW LOCK



Type no.	EAN no.	D	F	H	H1
183.151.075	5705499120325	75	147x147	34	19
183.151.100	5705499120332	100	147x147	35	25

BLÜCHER® INTELLIGENT ROOF

- THE SOLUTION NOTIFIES YOU IMMEDIATELY OF ANY PROBLEMS



BLÜCHER® Intelligent Roof Drainage System

Flat roofs should be inspected regularly to ensure free flow of water and that humidity is not creating fungal and bacterial growth in the roof structure.

The BLÜCHER® Intelligent Roof solution notifies you immediately of any problems and helps you prevent serious damage:

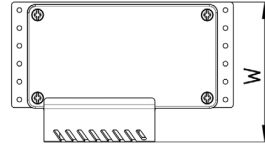
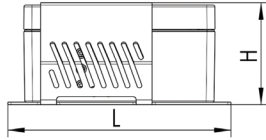
- Ongoing control of the water level on the roof
- Alarm in case of rising water level on the roof
- Supervision of the individual roof drain



INTELLIGENT
ROOF

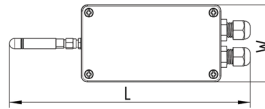
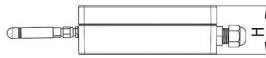
CONNECTED ROOF MONITOR

FOR ALL TYPES OF ROOF DRAINS



Type no.	EAN no.	H	L	W
900.100.400	5705499139976	40	207	65

CONNECTED ROOF GATEWAY



Type no.	EAN no.	H	L	W
900.000.400	5705499139969	63	140	87

For use in Europe.
 Otherwise, please contact BLÜCHER for information on the frequency this gateway uses.

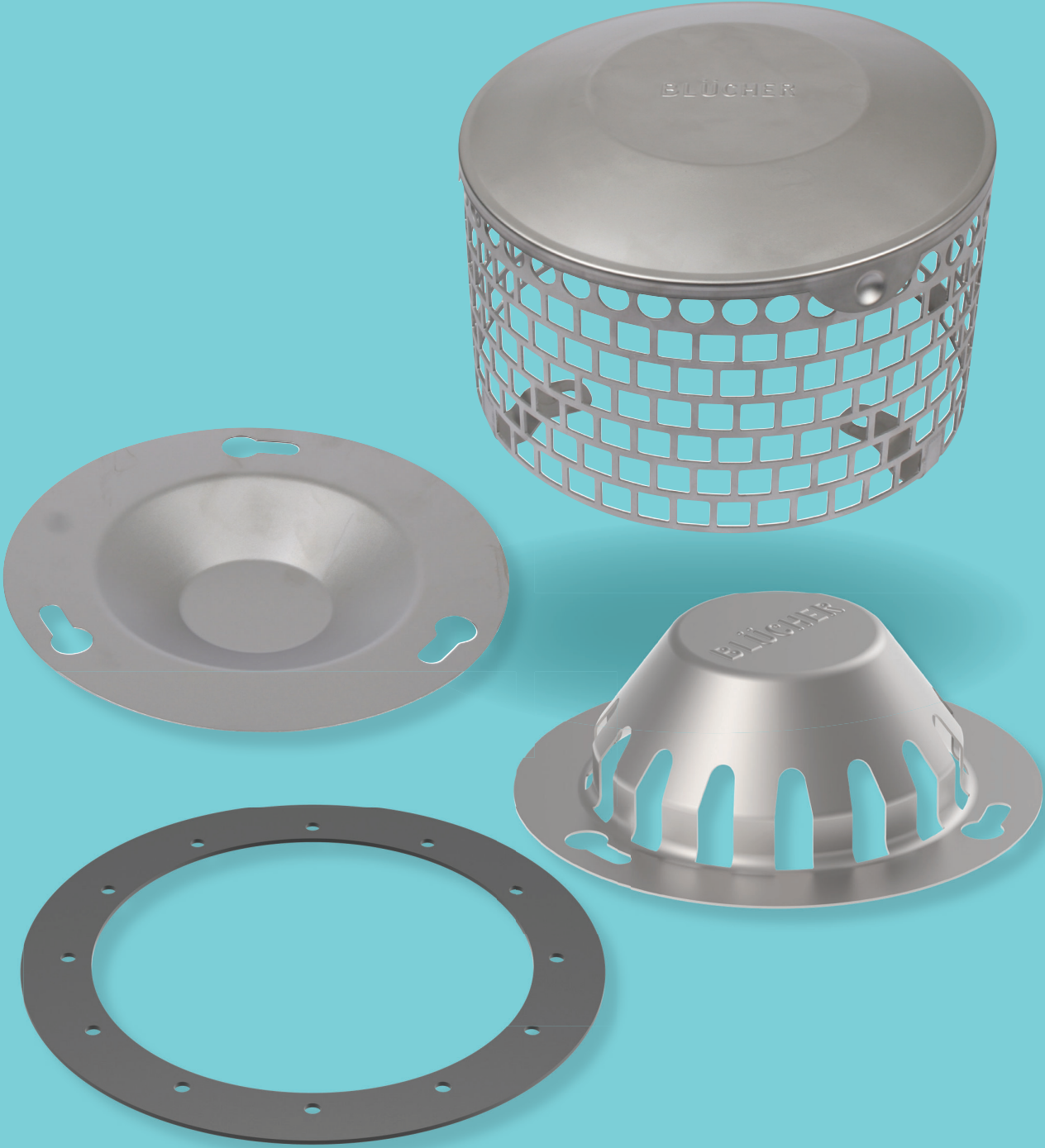
EXTERNAL ANTENNA FOR GATEWAY



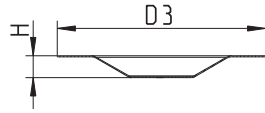
Type no.	EAN no.
900.900.000	5705499140002

Used to improve signal strength

BLÜCHER® ROOF ACCESSORIES

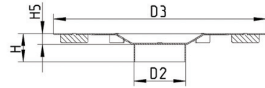


SIPHONIC PLATE



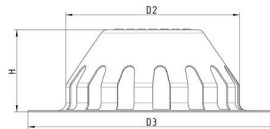
Type no.	EAN no.	H	D3
400.000.100	5705499133110	21	200

**SIPHONIC PLATE
FOR ROOF DRAIN Ø110MM**



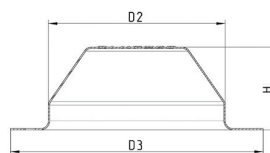
Type no.	EAN no.	H	H5	D2	D3
400.000.110	5705499139099	41	16	75	310

LEAF GUARD TYPE 400.000.001



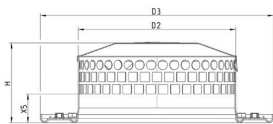
Type no.	EAN no.	H	D2	D3
400.000.001	5705499133127	65	140	200

LEAF GUARD TYPE 400.000.007



Type no.	EAN no.	H	D2	D3
400.000.007	5705499139457	65	140	200

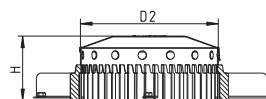
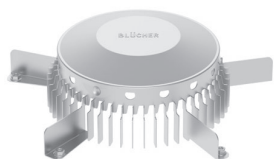
LEAF GUARD TYPE 405



Type no.	EAN no.	H	D2	D3	X5	Max Flow (l/s)
405.000.000	5705499139044	86	250	370	0	3.6
405.035.000	5705499139051	115	250	370	35	7.8
405.045.000	5705499139068	125	250	370	45	7.8
405.055.000	5705499139075	135	250	370	55	7.8

Fits parapet drain lower part.
Find further information about flow in the section "Flow rates for roof drains".

LEAF GUARD TYPE 408.000

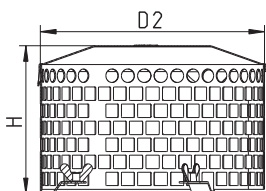


Type no.	EAN no.	H	D2
408.000.000	5705499139082	117	250

For roof drains with 125-160 mm outlet.

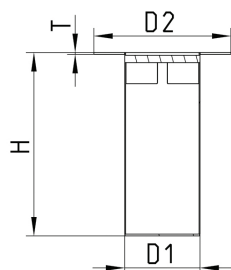
STONE GUARD FOR ROOF DRAINS

FOR ROOF DRAINS TYPE 40X.10X.XXX



Type no.	EAN no.	H	D2
400.000.005	5705499133431	165	250

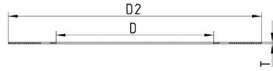
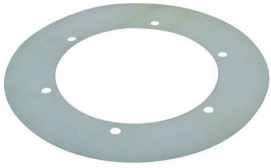
SAND BUCKET



Type no.	EAN no.	D1	H	D2	T
780.002.005.00	5705499134544	82	200	150	2
780.003.005.00	5705499134551	125	200	155	2

SEALING RING TYPE 402

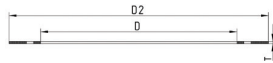
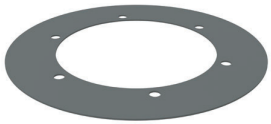
FOR ROOF DRAIN TYPE 402



Type no.	EAN no.	Designation.	D	D2	T	Material
402.EPDM.000	5705499139501	For EPDM membrane	150	241	1.5	EPDM
402.PVC.000	5705499139488	For PVC membrane	150	241	1.2	PVC
402.SI.000	5705499139495	For all other types of membrane	150	241	1.5	SI

SEALING RING TYPE 405

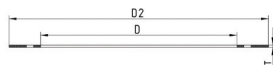
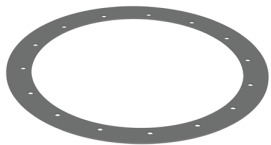
FOR ROOF DRAIN TYPE 405



Type no.	EAN no.	Designation.	D	D2	T	Material
405.SI.000	5705499139464	For all types of membrane	280	370	3	SI

SEALING RING TYPE 408

FOR ROOF DRAIN TYPE 408



Type no.	EAN no.	Designation.	D	D2	T	Material
408.SI.000	5705499139471	For all types of membrane	380	470	3	SI

ROOF DRAIN INSULATION TYPE 400.001



Type no.	EAN no.	D2	D3	X5
400.001.040	5705499133059	45	86	330
400.001.050	5705499133066	56	98	330
400.001.075	5705499133073	78	122	330
400.001.110	5705499133080	118	165	330

ELECTRICAL HEATING CABLE

0,8M HEATING CABLE + 1,0M RUBBER CABLE



Type no.	EAN no.
400.000.000	5705499133042

Voltage = 230V

SET OF NUTS FOR ROOF DRAIN



Type no.	EAN no.
400.000.003	5705499133202



Normal

opfører nyt logistikCenter

ak83 arkitekter

BASE
baseerhverv.dk

EKU RÅDGIVENDE
INGENJØRER A/S

ARKITEKT OG BYGHERRERÅDGIVER

TOTALENTREPRENØR

INGENJØR

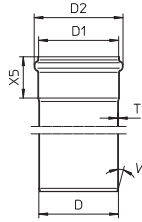
BLÜCHER® EUROPIPE - THE ADVANTAGES AT A GLANCE

- All in stainless steel – AISI 316L/EN1.4404 or AISI 304/EN1.4301
- Available in OD 40, 50, 75, 110, 125, 160, and 200 mm in standard lengths from 0,15 to 6 meters
- Fast and simple installation due to push-fit socket and spigot end jointing
- Low material weight (only 1-1.5 mm wall thickness), yet strong
- Completely interchangeable between vacuum and gravity installations
- 100% pressure tested from factory
- Non-combustible, classified as A1
- Complete range of approvals
- Fire tested A0-A60
- Long product-life expectancy
- Hygienic – low surface roughness, high flow capacity, no bacterial growth
- Recyclable
- Complete range of fittings
- Customized solutions available on request
- Easily combined with other pipe materials
- Easy maintenance
- One complete system from one supplier
- Shock and vibration tested

The advantages of stainless steel pipes

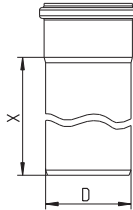


DIMENSIONAL DRAWING, SOCKET AND SPIGOT END
PIPES AND FITTINGS



Type no.	EAN no.	D	D1	D2	X5	T	V (°)
811.XXX.040		40	41	52	41	1	20
811.XXX.050		50	51	61	42	1	20
811.XXX.075		75	76	87	50	1	20
811.XXX.082		82	83	94	52	1	20
811.XXX.110		110	111	123	57	1	20
811.XXX.125		125	126	140	60	1	20
811.XXX.160		160	161	177	72	1.25	20
811.XXX.200		200	201	219	90	1.5	20
811.XXX.250		250	251	277	108	1.5	20
811.XXX.315		315	316	344	116	2	20

STRAIGHT PIPE WITH ONE SOCKET TYPE 811



Type no.	EAN no.	D	X.	Kg
811.015.040	5705499412635	40	150	0,20
811.025.040	5705499412659	40	250	0,40
811.050.040	5705499412673	40	500	0,60
811.075.040	5705499412697	40	750	0,78
811.100.040	5705499412710	40	1000	1,02
811.150.040	5705499412734	40	1500	1,50
811.200.040	5705499412758	40	2000	1,99
811.300.040	5705499412772	40	3000	2,96
811.400.040	5705499412796	40	4000	3,92
811.500.040	5705499412819	40	5000	4,89
811.600.040	5705499412833	40	6000	5,86

811.015.050	5705499400205	50	150	0,25
811.025.050	5705499400281	50	250	0,38
811.050.050	5705499400366	50	500	0,68
811.075.050	5705499400441	50	750	1,00
811.100.050	5705499400526	50	1000	1,25
811.150.050	5705499400601	50	1500	1,90
811.200.050	5705499400687	50	2000	2,45
811.300.050	5705499400762	50	3000	3,82
811.400.050	5705499400854	50	4000	5,06
811.500.050	5705499400939	50	5000	6,31
811.600.050	5705499401011	50	6000	7,56

811.015.075	5705499400229	75	150	0,41
811.025.075	5705499400304	75	250	0,58
811.050.075	5705499400380	75	500	1,00
811.075.075	5705499400465	75	750	1,50
811.100.075	5705499400540	75	1000	1,95
811.150.075	5705499400625	75	1500	2,75
811.200.075	5705499400700	75	2000	3,70
811.300.075	5705499400793	75	3000	5,78
811.400.075	5705499400878	75	4000	7,66
811.500.075	5705499400953	75	5000	9,54
811.600.075	5705499401035	75	6000	11,42

811.015.082	5705499411591	82	150	0,44
811.025.082	5705499411614	82	250	0,64
811.050.082	5705499411638	82	500	1,14
811.075.082	5705499411652	82	750	1,65
811.100.082	5705499411676	82	1000	2,15
811.150.082	5705499411690	82	1500	3,16
811.200.082	5705499411713	82	2000	4,17
811.300.082	5705499411737	82	3000	6,20
811.400.082	5705499411751	82	4000	8,22
811.500.082	5705499411775	82	5000	10,24
811.600.082	5705499411799	82	6000	12,26

811.015.110	5705499400243	110	150	0,61
811.025.110	5705499400328	110	250	0,87
811.050.110	5705499400403	110	500	1,50
811.075.110	5705499400489	110	750	2,15
811.100.110	5705499400564	110	1000	2,85
811.150.110	5705499400649	110	1500	4,24

Continues on next page

STRAIGHT PIPE WITH ONE SOCKET TYPE 811

Type no.	EAN no.	D	X.	Kg
Continued from previous page				
811.200.110	5705499400724	110	2000	5,40
811.300.110	5705499400816	110	3000	8,34
811.400.110	5705499400892	110	4000	11,26
811.500.110	5705499400977	110	5000	14,02
811.600.110	5705499401059	110	6000	16,78

811.015.125	5705499410839	125	150	0,70
811.025.125	5705499408218	125	250	1,01
811.050.125	5705499408232	125	500	1,78
811.075.125	5705499410860	125	750	2,55
811.100.125	5705499408263	125	1000	3,32
811.150.125	5705499408287	125	1500	4,86
811.200.125	5705499408300	125	2000	6,40
811.300.125	5705499410907	125	3000	9,47
811.400.125	5705499410914	125	4000	12,55
811.500.125	5705499410938	125	5000	15,63
811.600.125	5705499410952	125	6000	18,71

811.015.160	5705499400267	160	150	1,19
811.025.160	5705499400342	160	250	1,65
811.050.160	5705499400427	160	500	2,96
811.075.160	5705499400502	160	750	4,22
811.100.160	5705499400588	160	1000	5,48
811.150.160	5705499400663	160	1500	8,02
811.200.160	5705499400748	160	2000	10,54
811.300.160	5705499400830	160	3000	15,19
811.400.160	5705499400915	160	4000	20,64
811.500.160	5705499400991	160	5000	25,69
811.600.160	5705499401073	160	6000	30,74

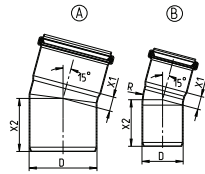
811.015.200	5705499412291	200	150	1,96
811.025.200	5705499412307	200	250	2,77
811.050.200	5705499412314	200	500	4,62
811.075.200	5705499412321	200	750	6,47
811.100.200	5705499412338	200	1000	8,32
811.200.200	5705499412345	200	2000	15,71
811.300.200	5705499412352	200	3000	23,10

811.050.250	5705499121735	250	500	5,84
811.100.250	5705499121742	250	1000	10,47
811.200.250	5705499121759	250	2000	19,72
811.300.250	5705499121766	250	3000	28,97

811.050.315 S	5705499413748	315	500	9,93
811.100.315 S	5705499413762	315	1000	17,70
811.200.315 S	5705499413786	315	2000	33,24
811.300.315 S	5705499413809	315	3000	48,77

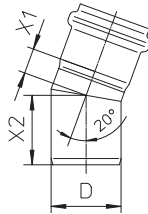
- Bends

BEND 15° TYPE 820.015



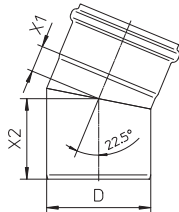
Type no.	EAN no.	D	X1	X2	R	Kg	Ver.
820.015.040	5705499412857	40	15	53	40	0,12	B
820.015.050	5705499401127	50	16	57	75	0,15	B
820.015.075	5705499401141	75	20	66	100	0,26	B
820.015.082	5705499411812	82	17	64	-	0,30	A
820.015.110	5705499401165	110	25	78	110	0,47	B
820.015.125	5705499408607	125	19	84	-	0,56	A
820.015.160	5705499401189	160	29	99	-	1,05	A
820.015.200 S	5705499410976	200	31	123	-	1,99	A
820.015.250 S	5705499121599	250	38	136	-	3,03	A
820.015.315 S	5705499413816	315	46	151	-	5,50	A

BEND 20° TYPE 820.020



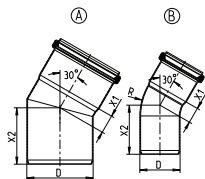
Type no.	EAN no.	D	X1	X2	Kg
820.020.050	5705499401202	50	18	50	0,15

BEND 22.5° TYPE 820.023



Type no.	EAN no.	D	X1	X2	Kg
820.023.050 S	5705499408621	50	15	57	0,15
820.023.075 S	5705499401219	75	21	71	0,29
820.023.110 S	5705499408638	110	28	85	0,51
820.023.160 S	5705499408645	160	39	109	1,18

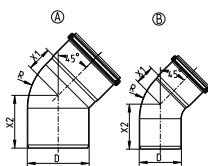
BEND 30° TYPE 820.030



Type no.	EAN no.	D	X1	X2	R	Kg	Ver.
820.030.040	5705499412871	40	18	55	40	0,13	B
820.030.050	5705499401226	50	20	61	75	0,16	B
820.030.075	5705499401240	75	25	75	100	0,28	B
820.030.082	5705499411836	82	23	70	-	0,32	A
820.030.110	5705499401264	110	33	86	110	0,51	B
820.030.125	5705499408652	125	28	98	-	0,63	A
820.030.160	5705499401288	160	40	109	-	1,20	A
820.030.200 S	5705499410983	200	45	137	-	2,20	A
820.030.250 S	5705499121605	250	56	153	-	3,35	A
820.030.315 S	5705499413823	315	68	172	-	6,18	A

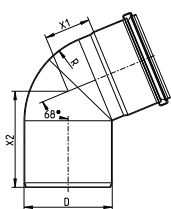
- Bends

BEND 45° TYPE 820.045



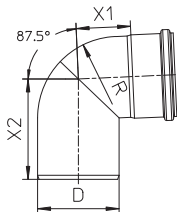
Type no.	EAN no.	D	X1	X2	R	Kg	Ver.
820.045.040	5705499412895	40	21	58	40	0,13	A
820.045.050	5705499401301	50	27	64	75	0,17	B
820.045.075	5705499401325	75	34	80	100	0,30	B
820.045.082	5705499411850	82	30	80	82	0,34	A
820.045.110	5705499401349	110	44	94	110	0,56	A
820.045.125	5705499408676	125	58	111	125	0,73	A
820.045.160	5705499401363	160	57	128	172	1,37	A
820.045.200 S	5705499414011	200	61	151	200	2,38	A
820.045.250 S	5705499414028	250	77	177	250	3,69	A

BEND 68° TYPE 820.068



Type no.	EAN no.	D	X1	X2	R	Kg
820.068.082	5705499412369	82	41	97	82	0,40
820.068.110	5705499403817	110	58	120	110	0,60

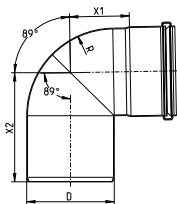
BEND 87.5° TYPE 820.090



Type no.	EAN no.	D	X1	X2	R	Kg	Ver.
820.090.040	5705499412918	40	32	79	40	0,16	A
820.090.050	5705499401387	50	41	90	75	0,21	B
820.090.075	5705499401400	75	54	108	75	0,39	A
820.090.082	5705499411874	82	53	109	82	0,43	A
820.090.110	5705499401424	110	74	136	110	0,67	A
820.090.125	5705499408720	125	93	161	125	1,68	A
820.090.160	5705499401448	160	103	184	164	1,72	A
820.090.200 S	5705499414042	200	116	216	200	3,00	A
820.090.250 S	5705499414059	250	145	269	250	4,77	A

Please notice for the land based UK market:
To comply with BS EN 12056 Gravity Drainage inside Buildings use 821 bend at offsets and base of stack.

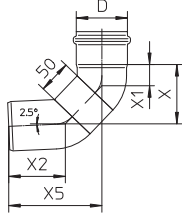
BEND 89° TYPE 820.090



Type no.	EAN no.	D	X1	X2	R	Kg
820.090.050 AS	5705499408690	50	42	88	50	0,21
820.090.075 AS	5705499408706	75	55	109	75	0,39
820.090.110 AS	5705499408713	110	75	137	110	0,67
820.090.160 AS	5705499408744	160	105	185	164	2,10

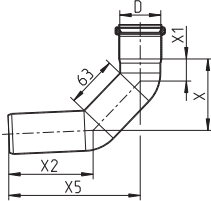
- Bends

BEND, LONG RADIUS 87.5°, 50 MM TYPE 821.000



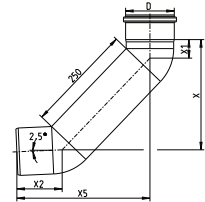
Type no.	EAN no.	D	X	X1	X2	X5	Kg
821.000.050	5705499404005	50	77	26	72	120	0,30
821.000.075	5705499404029	75	90	32	86	141	0,50

BEND, LONG RADIUS 87.5°, 164 MM TYPE 821.164



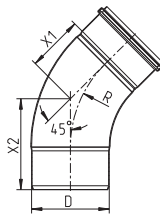
Type no.	EAN no.	D	X	X1	X2	X5	Kg
821.164.050 S	5705499124057	50	87	27	103	160	0,32

BEND, LONG RADIUS 87.5°, 250 MM TYPE 821.090



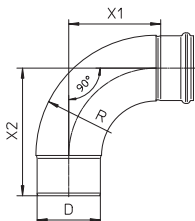
Type no.	EAN no.	D	X	X1	X2	X5	Kg
821.090.050	5705499408751	50	221	26	72	259	0,50
821.090.075	5705499408775	75	234	32	87	280	0,90
821.090.110	5705499401462	110	255	42	103	307	1,61
821.090.125	5705499412178	125	275	58	126	335	1,72
821.090.160	5705499401486	160	285	56	137	356	3,25

BEND, LARGE RADIUS 45° TYPE 825.045



Type no.	EAN no.	D	X1	X2	R	Kg
825.045.200 S	5705499410990	200	144	234	300	4,18
825.045.250 S	5705499121612	250	187	280	375	6,53
825.045.315 S	5705499413830	315	204	320	400	10,78

BEND, LARGE RADIUS 87.5° TYPE 825.090



Type no.	EAN no.	D	X1	X2	R	Kg
825.090.050 S	5705499408843	50	77	125	97	0,65
825.090.075 S	5705499408850	75	104	155	133	1,00
825.090.110 S	5705499408867	110	160	222	209	1,41
825.090.160 S	5705499408874	160	244	322	313	2,99
825.090.200 S	5705499411423	200	307	397	300	6,41
825.090.250 S	5705499121629	250	391	484	375	9,88

Continues on next page

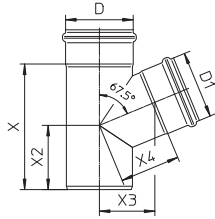
- Bends**BEND, LARGE RADIUS 87.5° TYPE 825.090**

Type no.	EAN no.	D	X1	X2	R	Kg
Continued from previous page						
825.090.315 S	5705499413847	315	421	538	400	15,78

Please notice for the land based UK market:
To comply with BS EN 12056 Gravity Drainage inside Buildings use 821 bend at offsets and base of stack.

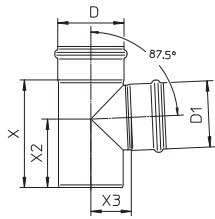
- Branches

BRANCH 67.5° TYPE 829



Type no.	EAN no.	D	D1	X	X2	X3	X4	Kg
829.050.075	5705499401585	75	50	139	80	64	70	1,00
829.050.082	5705499411898	82	50	133	73	67	72	0,50
829.075.075	5705499401592	75	75	150	80	73	79	0,53
829.075.082	5705499411904	82	75	160	87	64	71	0,62
829.082.082	5705499411911	82	82	168	91	67	72	0,66
829.110.110	5705499403824	110	110	209	107	92	100	0,88

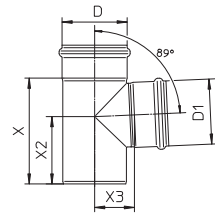
BRANCH 87.5° TYPE 830



Type no.	EAN no.	D	D1	X	X2	X3	Kg
830.040.040	5705499412932	40	40	101	69	30	0,22
830.040.050	5705499412956	50	40	106	71	35	0,26
830.050.050	5705499401608	50	50	106	71	35	0,27
830.050.075	5705499401622	75	50	139	98	49	0,44
830.050.082	5705499411928	82	50	128	86	52	0,47
830.050.110	5705499401646	110	50	132	93	66	0,64
830.050.160	5705499401660	160	50	158	109	88	2,40
830.075.075	5705499401684	75	75	139	90	52	0,50
830.075.082	5705499411942	82	75	154	99	55	0,57
830.075.110	5705499401707	110	75	152	104	69	0,74
830.075.125	5705499408942	125	75	187	110	77	0,94
830.075.160	5705499412550	160	75	179	121	95	1,46
830.082.082	5705499411966	82	82	162	103	56	0,61
830.110.110	5705499401721	110	110	183	117	69	0,89
830.110.125	5705499408973	125	110	205	127	77	1,25
830.110.160	5705499401745	160	110	236	152	93	1,80
830.125.125	5705499409000	125	125	220	135	82	1,17
830.160.160	5705499401769	160	160	288	184	104	2,34
830.160.200 S	5705499411003	200	160	293	186	125	3,45
830.200.200 S	5705499411010	200	200	333	206	128	4,17
830.200.250 S	5705499121636	250	200	352	220	155	5,50
830.250.250 S	5705499121643	250	250	407	245	152	6,53
830.250.315 S	5705499413854	315	250	416	253	189	9,95
830.315.315 S	5705499413861	315	315	481	286	196	12,22

Please notice for the land based UK market:
To comply with BS EN 12056 Gravity Drainage inside Buildings, when using non reducing branch consider branch type 838, 848 or 839

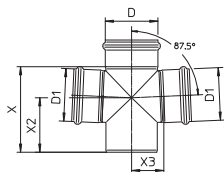
BRANCH 89° TYPE 830



Type no.	EAN no.	D	D1	X	X2	X3	Kg
830.050.050 AS	5705499408898	50	50	106	71	35	0,27
830.050.075 AS	5705499408904	75	50	139	99	48	0,44
830.050.110 AS	5705499408911	110	50	132	94	65	0,64
830.075.075 AS	5705499408928	75	75	139	91	50	0,50
830.075.110 AS	5705499408935	110	75	152	106	68	0,76
830.110.110 AS	5705499408966	110	110	183	118	67	0,88
830.110.160 AS	5705499408997	160	110	236	154	92	1,83
830.160.160 AS	5705499409024	160	160	288	186	102	2,40

- Branches

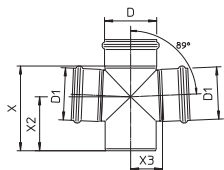
DOUBLE BRANCH 87.5° TYPE 831



Type no.	EAN no.	D	D1	X	X2	X3	Kg
831.050.050	5705499401783	50	50	106	71	35	0,36
831.050.075	5705499401806	75	50	139	98	49	0,54
831.050.110	5705499401820	110	50	132	93	66	0,70
831.050.160	5705499412567	160	50	158	109	88	1,38
831.075.075	5705499401844	75	75	139	90	52	0,66
831.075.110	5705499401868	110	75	152	104	69	0,89
831.110.110	5705499401882	110	110	183	116	69	1,14
831.110.160	5705499401905	160	110	236	152	94	2,05
831.160.160	5705499401929	160	160	288	184	104	2,91

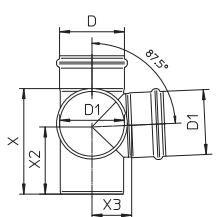
Please notice for the land based UK market:
To comply with BS EN 12056 Gravity Drainage inside Buildings, when using non reducing branch consider branch type 836.

DOUBLE BRANCH 89° TYPE 831



Type no.	EAN no.	D	D1	X	X2	X3	Kg
831.050.050 AS	5705499409031	50	50	106	71	35	0,36
831.050.075 AS	5705499409048	75	50	139	99	48	0,54
831.050.110 AS	5705499409055	110	50	132	94	65	0,72
831.075.075 AS	5705499409062	75	75	139	90	52	0,66
831.075.110 AS	5705499409079	110	75	152	104	69	0,89
831.110.110 AS	5705499409086	110	110	183	116	69	1,13
831.110.160 AS	5705499409093	160	110	236	154	92	2,05
831.160.160 AS	5705499409109	160	160	288	184	104	2,91

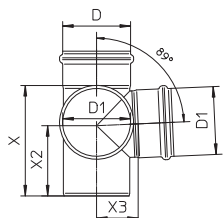
DOUBLE BRANCH 87.5° TYPE 832



Type no.	EAN no.	D	D1	X	X2	X3	Kg
832.050.050	5705499401943	50	50	106	71	35	0,35
832.050.075	5705499401967	75	50	139	98	49	0,54
832.050.110	5705499401981	110	50	132	93	66	0,72
832.075.075	5705499402001	75	75	139	90	52	0,66
832.075.110	5705499402025	110	75	152	104	69	0,89
832.110.110	5705499402049	110	110	183	116	69	1,14
832.110.160	5705499402063	160	110	236	152	94	2,05
832.160.160	5705499402087	160	160	288	184	104	2,91

Please notice for the land based UK market:
To comply with BS EN 12056 Gravity Drainage inside Buildings, when using non reducing branch consider branch type 837.

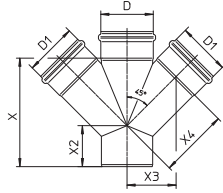
DOUBLE BRANCH 89° TYPE 832



Type no.	EAN no.	D	D1	X	X2	X3	Kg
832.050.050 AS	5705499409116	50	50	106	71	35	0,36
832.050.075 AS	5705499409123	75	50	139	99	48	0,54
832.050.110 AS	5705499409130	110	50	132	94	65	0,72
832.075.075 AS	5705499409147	75	75	139	91	51	0,66
832.075.110 AS	5705499409154	110	75	152	105	68	0,89
832.110.110 AS	5705499409161	110	110	183	118	67	1,13
832.160.160 AS	5705499409185	160	160	288	184	104	2,91

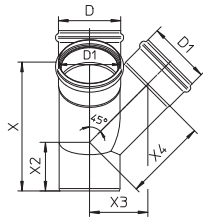
- Branches

DOUBLE BRANCH 45° TYPE 836



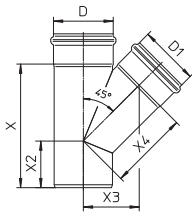
Type no.	EAN no.	D	D1	X	X2	X3	X4	Kg
836.050.050 S	5705499402117	50	50	128	57	54	76	0,45
836.050.075 S	5705499402131	75	50	144	56	66	94	0,69
836.050.110 S	5705499402155	110	50	147	42	84	119	0,80
836.075.075 S	5705499402179	75	75	183	78	78	110	1,15
836.075.110 S	5705499402193	110	75	182	60	95	135	1,31
836.110.110 S	5705499402216	110	110	233	88	105	149	2,10
836.110.125 S	5705499412574	125	110	250	90	110	155	1,65
836.110.160 S	5705499402223	160	110	258	80	131	186	2,85
836.125.125 S	5705499412581	125	125	273	103	120	170	2,10
836.160.160 S	5705499402230	160	160	331	120	156	221	5,28
836.200.200 S	5705499412598	200	200	415	151	194	274	5,28
836.250.250 S	5705499412604	250	250	512	177	236	334	7,01

DOUBLE BRANCH 45° TYPE 837



Type no.	EAN no.	D	D1	X	X2	X3	X4	Kg
837.050.050 S	5705499402254	50	50	128	57	54	76	0,49
837.050.075 S	5705499402278	75	50	144	56	66	94	0,67
837.050.110 S	5705499402285	110	50	147	42	84	119	0,92
837.075.075 S	5705499402292	75	75	179	74	78	110	1,43
837.075.110 S	5705499402308	110	75	182	60	95	135	1,31
837.110.110 S	5705499402322	110	110	233	88	105	149	2,07
837.110.160 S	5705499402339	160	110	258	80	131	186	2,07
837.160.160 S	5705499402346	160	160	331	120	156	221	4,02

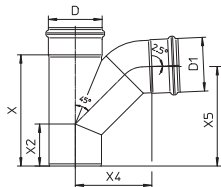
OBLIQUE BRANCH 45° TYPE 838



Type no.	EAN no.	D	D1	X	X2	X3	X4	Kg
838.040.040	5705499412994	40	40	118	58	45	63	0,25
838.040.050	5705499413014	50	40	119	55	50	71	0,30
838.050.050	5705499402353	50	50	133	62	54	76	0,32
838.050.075	5705499402377	75	50	144	56	66	94	0,48
838.050.082	5705499411980	82	50	149	57	72	102	0,54
838.050.110	5705499402391	110	50	147	42	84	119	0,70
838.075.075	5705499402414	75	75	183	78	78	110	0,64
838.075.082	5705499412000	82	75	185	75	81	114	0,70
838.075.110	5705499402438	110	75	181	60	95	135	0,88
838.075.125	5705499409314	125	75	200	65	100	141	1,32
838.082.082	5705499412024	82	82	195	80	83	118	0,75
838.110.110	5705499402452	110	110	236	91	105	149	1,16
838.110.125	5705499409338	125	110	250	90	110	155	1,50
838.110.160	5705499402476	160	110	258	80	131	186	2,02
838.125.125	5705499409352	125	125	273	103	120	170	1,49
838.160.160	5705499402490	160	160	331	120	156	220	2,95
838.160.200 S	5705499411027	200	160	359	123	177	250	4,37
838.200.200 S	5705499411034	200	200	415	151	194	274	5,47
838.200.250 S	5705499121650	250	200	432	142	217	307	6,61
838.250.250 S	5705499121667	250	250	512	177	236	334	8,57
838.250.315 S	5705499413878	315	250	518	154	270	416	12,48
838.315.315 S	5705499413885	315	315	621	200	294	382	16,53

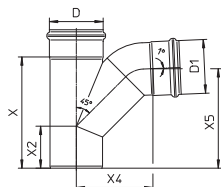
- Branches

SWEPT BRANCH 87.5° TYPE 839



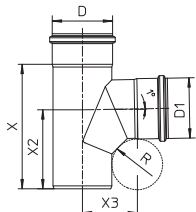
Type no.	EAN no.	D	D1	X	X2	X4	X5	Kg
839.050.050	5705499402513	50	50	133	62	85	122	0,44
839.050.075	5705499402537	75	50	144	56	98	128	0,60
839.050.110	5705499402551	110	50	147	42	115	132	0,81
839.075.075	5705499402575	75	75	183	78	114	160	0,87
839.075.110	5705499402599	110	75	182	60	131	160	1,11
839.110.110	5705499402612	110	110	236	91	161	212	1,64
839.110.160	5705499402636	160	110	256	80	187	227	2,53
839.160.160	5705499402650	160	160	331	120	228	296	4,52
839.200.200 S	5705499412611	200	200	415	151	280	373	6,13
839.250.250 S	5705499412628	250	250	512	177	345	449	9,67

SWEPT BRANCH 89° TYPE 839



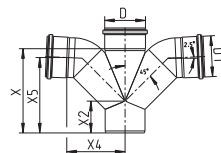
Type no.	EAN no.	D	D1	X	X2	X4	X5	Kg
839.050.050 AS	5705499409376	50	50	133	62	85	121	0,44
839.050.075 AS	5705499409383	75	50	144	56	98	128	0,60
839.050.110 AS	5705499409390	110	50	147	42	115	132	0,81
839.075.075 AS	5705499409406	75	75	183	78	115	160	0,87
839.075.110 AS	5705499409413	110	75	183	60	131	161	1,11
839.110.110 AS	5705499409420	110	110	236	91	163	211	1,64
839.110.160 AS	5705499409437	160	110	258	80	188	226	2,53
839.160.160 AS	5705499409444	160	160	331	120	227	297	4,52

SWEPT BRANCH 89° TYPE 848



Type no.	EAN no.	D	D1	X	X2	X3	R	Kg
848.050.050 AS	5705499409635	50	50	128	88	57	25	0,43
848.050.075 AS	5705499409642	75	50	144	97	69	25	0,59
848.050.110 AS	5705499409659	110	50	152	105	87	25	0,70
848.075.075 AS	5705499409666	75	75	179	125	83	50	0,83
848.075.110 AS	5705499409673	110	75	182	110	85	25	0,85
848.110.110 AS	5705499409680	110	110	233	148	101	50	1,50
848.110.160 AS	5705499409697	160	110	234	154	114	25	1,50
848.160.160 AS	5705499409703	160	160	286	189	127	50	2,02

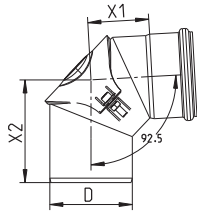
DOUBLE SWEPT BRANCH TYPE 879



Type no.	EAN no.	D	D1	X	X2	X4	X5	Kg
879.110.110 S	5705499403916	110	110	233	88	161	208	1,80

- Access pipes and bends

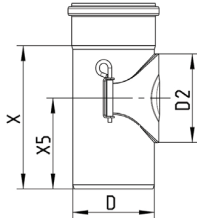
BEND 87.5° WITH ACCESS TYPE 822



Type no.	EAN no.	D	X1	X2	Kg
822.090.075	5705499401509	75	57	102	0,61
822.090.110	5705499401523	110	81	137	0,97
822.090.160	5705499401547	160	112	205	1,97

For non pressurized system

PIPE WITH ACCESS TYPE 840

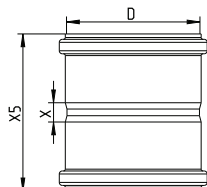


Type no.	EAN no.	D	D2	X	X5	Kg
840.050.050	5705499140071	50	55	115	80	0,38
840.050.050 S	5705499140064	50	55	115	80	0,38
840.075.075	5705499402674	75	80	139	92	0,64
840.075.075 S	5705499402681	75	80	139	92	0,64
840.110.110	5705499403794	110	120	194	123	0,90
840.110.110 S	5705499403800	110	120	194	123	0,90
840.111.110	5705499402698	110	120	253	187	1,32
840.111.110 S	5705499402704	110	120	253	187	1,32
840.125.125 S	5705499411058	125	120	195	128	1,28
840.160.160	5705499402711	160	120	277	208	2,41
840.160.160 S	5705499402728	160	120	277	208	2,41
840.200.200 S	5705499412215	200	120	288	208	3,45

For non pressurized system

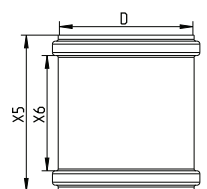
- Sockets

DOUBLE COUPLING TYPE 841



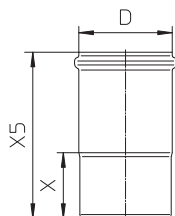
Type no.	EAN no.	D	X	X5	Kg
841.040.040	5705499413038	40	20	104	0,13
841.050.050	5705499402735	50	13	97	0,15
841.075.075	5705499402759	75	20	120	0,26
841.082.082 S	5705499412048	82	20	124	0,31
841.110.110	5705499402773	110	16	130	0,45
841.125.125	5705499409475	125	20	140	0,54
841.160.160	5705499402797	160	20	162	1,04
841.200.200 S	5705499411065	200	20	200	1,85
841.250.250 S	5705499121674	250	30	246	3,11
841.315.315 S	5705499413908	315	30	262	5,36

DOUBLE SLIP COUPLING TYPE 842



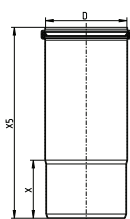
Type no.	EAN no.	D	X5	X6	Kg
842.040.040 S	5705499413069	40	104	76	0,13
842.050.050 S	5705499402810	50	97	71	0,16
842.075.075 S	5705499402827	75	120	91	0,21
842.082.082 S	5705499412055	82	124	95	0,31
842.110.110 S	5705499402834	110	130	97	0,45
842.125.125 S	5705499409550	125	140	104	0,47
842.160.160 S	5705499402841	160	162	118	1,05
842.200.200 S	5705499411072	200	200	147	1,82
842.250.250 S	5705499121681	250	246	173	3,11
842.315.315 S	5705499413915	315	262	177	5,36

EXPANSION SOCKET TYPE 843



Type no.	EAN no.	D	X	X5	Kg
843.095.040	5705499413076	40	55	150	0,17
843.105.050	5705499402858	50	57	159	0,21
843.115.075	5705499402872	75	62	175	0,36
843.125.110	5705499402896	110	79	200	0,57
843.140.125	5705499122503	125	100	240	0,81
843.182.160	5705499402919	160	122	292	1,55

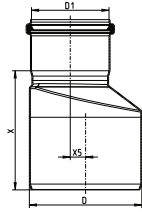
EXPANSION SOCKET, LONG MODEL TYPE 869



Type no.	EAN no.	D	X	X5	Kg
869.143.050	5705499410617	50	57	200	0,25
869.163.075	5705499410631	75	62	225	0,40
869.170.082	5705499121339	82	70	240	0,54
869.181.110	5705499410655	110	79	260	0,70
869.200.125	5705499412192	125	100	300	0,99
869.238.160	5705499410679	160	122	360	1,85
869.300.200 S	5705499121353	200	120	420	2,43

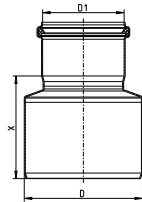
- Increases and reducers

INCREASER ECCENTRIC TYPE 850



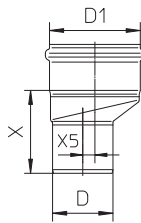
Type no.	EAN no.	D	D1	X	X5	Kg
850.040.050 S	5705499413397	50	40	85	5	0,16
850.050.075	5705499403084	75	50	87	7	0,22
850.050.082 S	5705499412062	82	50	97	14	0,25
850.050.110	5705499403107	110	50	114	25	0,38
850.075.110	5705499403138	110	75	116	15	0,42
850.075.160	5705499403169	160	75	178	37	1,20
850.082.110 S	5705499412086	110	82	111	11	0,43
850.110.125 S	5705499413410	125	110	109	8	0,49
850.110.160	5705499403206	160	110	140	22	1,06
850.125.160 S	5705499413427	160	125	138	18	0,95
850.160.200 S	5705499413434	200	160	165	20	1,67
850.200.250 S	5705499413441	250	200	195	25	2,57
850.200.315 S	5705499413953	315	200	280	58	4,61
850.250.315 S	5705499413977	315	250	242	33	4,82

INCREASER CONCENTRIC TYPE 850



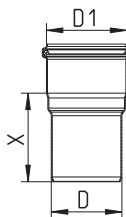
Type no.	EAN no.	D	D1	X	Kg
850.040.050 CS	5705499413991	50	40	65	0,13
850.050.075 CS	5705499409734	75	50	82	0,20
850.050.110 CS	5705499408454	110	50	94	0,30
850.075.082 CS	5705499412079	82	75	96	0,29
850.075.110 C	5705499403145	110	75	95	0,37
850.082.110 CS	5705499412093	110	82	110	1,00
850.110.125 CS	5705499409758	125	110	103	0,52
850.110.160 CS	5705499408461	160	110	117	0,83
850.125.160 CS	5705499408478	160	125	145	1,00
850.160.200 CS	5705499411096	200	160	170	1,50
850.200.250 CS	5705499121698	250	200	176	1,98
850.200.315 CS	5705499413946	315	200	223	4,11
850.250.315 CS	5705499413960	315	250	180	3,74

REDUCER ECCENTRIC TYPE 850



Type no.	EAN no.	D	D1	X	X5	Kg
850.050.040 S	5705499403961	40	50	77	5	0,10
850.075.050 S	5705499403121	50	75	80	7	0,28
850.110.050 S	5705499403183	50	110	99	25	0,50
850.110.075 S	5705499403190	75	110	104	15	0,55
850.110.082 S	5705499413342	82	110	101	11	0,29
850.125.110 S	5705499413359	110	125	96	8	1,00
850.160.110 S	5705499408485	110	160	123	22	1,08
850.160.125 S	5705499413366	125	160	136	18	0,50
850.200.160 S	5705499413373	160	200	153	20	1,77
850.250.200 S	5705499413380	200	250	192	25	1,00
850.315.250 S	5705499413984	250	315	229	33	4,93

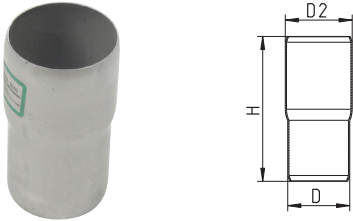
REDUCER CONCENTRIC TYPE 850



Type no.	EAN no.	D	D1	X	Kg
850.050.032 S	5705499403053	32	50	52	0,15
850.082.075 CS	5705499413465	75	82	94	1,00

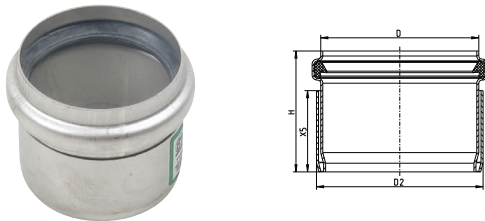
- Adaptors

ADAPTOR FOR PVC PIPE TYPE 852



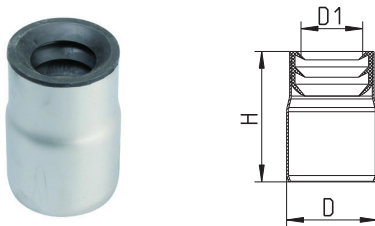
Type no.	EAN no.	D	H.	D2	Kg
852.050.054 S	5705499409772	50	117	54	0,12
852.075.082 S	5705499409796	75	123	82	0,24

ADAPTOR FOR PVC PIPE TYPE 852



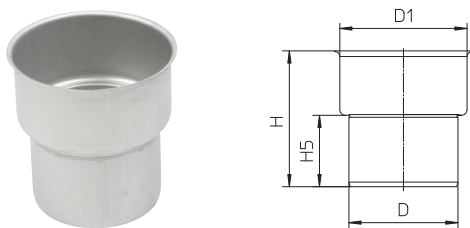
Type no.	EAN no.	D	H.	D2	X5	Kg
852.050.054 SOS	5705499409789	50	49	54	30	0,12
852.075.082 SOS	5705499409802	75	60	82	40	0,24

ADAPTOR FOR PVC PIPE TYPE 852



Type no.	EAN no.	D	D1	H.	Kg
852.075.052	5705499126709	75	52	108	0,31

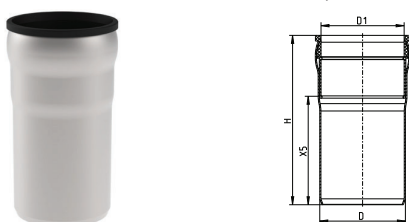
ADAPTOR FOR CAST IRON PIPE TYPE 853



Type no.	EAN no.	D	D1	H.	H5.	Kg
853.093.075 S	5705499403251	75	93	125	66	0,24
853.127.110 S	5705499403268	110	127	141	76	0,38

Please order rubber insert type 803 separately

ADAPTOR FROM OTHER PIPE SYSTEM (SYSTEM-X) TO BLÜCHER PIPE



Type no.	EAN no.	D	D1	H	X5	Kg
859.053.050 S	5705499140149	50	53	105	61	0,22
859.073.075 S	5705499140156	75	73	148	95	0,40
859.102.110 S	5705499140163	110	101.6	175	110	0,94

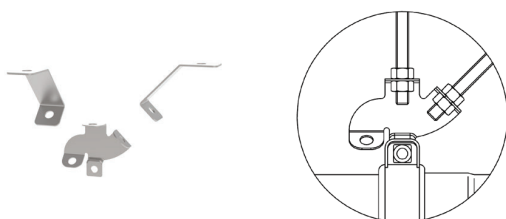
Clamps

PIPE JOINT CLAMP TYPE 847



Type no.	EAN no.	D
847.040.040	5705499413090	40
847.050.050	5705499412420	50
847.075.075	5705499412437	75
847.082.082	57054994121322	82
847.110.110	5705499412444	110
847.125.125	5705499412451	125
847.160.160	5705499412468	160
847.200.200	5705499412475	200
847.250.250	57054994121773	250

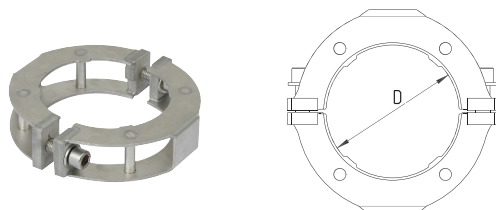
CROSS RAKING FIXING FOR PIPE JOINT CLAMP TYPE 847



Type no.	EAN no.
847.000.000	5705499409628

To be used with pipe joint clamp type 847.

PRESSURE PEAK PIPE JOINT CLAMP TYPE 847.001

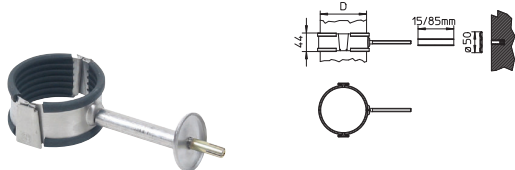


Type no.	EAN no.	D
847.001.040	5705499413106	40
847.001.050	5705499412499	50
847.001.075	5705499412505	75
847.001.082	5705499412512	82
847.001.110	5705499412529	110
847.001.125	5705499412536	125
847.001.160	5705499412543	160
847.001.200	5705499413939	200
847.001.250	5705499413687	250
847.001.315	5705499413694	315

Pipework can withstand brief pressure peaks when fitted with pressure peak joint clamps on all joints.
Not to be used instead of remotely operated valve.

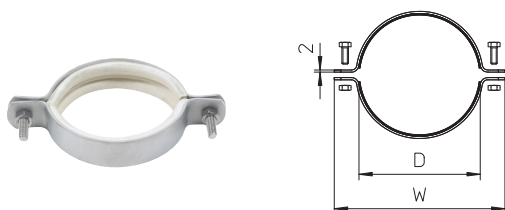
Pipe hangers

PIPE HANGER WITH TPE RUBBER TYPE 860



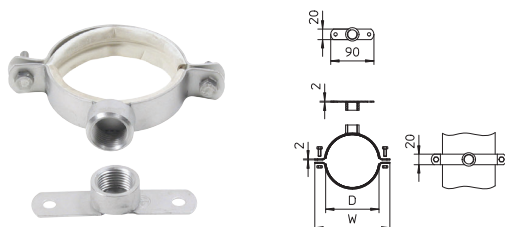
Type no.	EAN no.	D
860.040.050	5705499403350	50
860.040.075	5705499403367	75
860.040.110	5705499403374	110
860.040.160	5705499403381	160

PIPE HANGER WITH EPDM RUBBER TYPE 895.000



Type no.	EAN no.	D	W
895.000.050 GS	5705499403510	50	101
895.000.075 GS	5705499403527	75	126
895.000.110 GS	5705499403534	110	161
895.000.160 GS	5705499403541	160	211

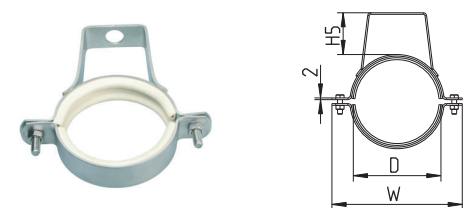
PIPE HANGER WITH EPDM RUBBER TYPE 895.012



Type no.	EAN no.	D	W	Kg
895.012.040 GS	5705499413113	40	90	0,16
895.012.050 GS	5705499403558	50	101	0,17
895.012.075 GS	5705499403565	75	126	0,20
895.012.110 GS	5705499403572	110	161	0,23
895.012.160 GS	5705499403589	160	211	0,27

With 1/2" BSP thread.

PIPE HANGER WITH EPDM RUBBER TYPE 895.200



Type no.	EAN no.	D	H5.	W
895.200.040 S	5705499413120	40	38	90
895.200.050 S	5705499410747	50	38	101
895.200.075 S	5705499410754	75	54	126
895.200.110 S	5705499410761	110	52	161
895.200.160 S	5705499410778	160	71	211

PIPE HANGER WITH EPDM RUBBER TYPE 895.300

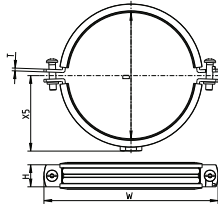


Type no.	EAN no.	D	W
895.300.040 GS	5705499413137	40	90
895.300.050 GS	5705499403633	50	101
895.300.075 GS	5705499403640	75	126
895.300.110 GS	5705499403657	110	161
895.300.160 GS	5705499403664	160	211

Pipe hangers

PIPE HANGER WITH EPDM RUBBER TYPE 895.401

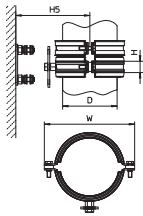
IN GALVANIZED STEEL



Type no.	EAN no.	D	H.	W	X5	T	Nut
895.401.040	8712993164059	40	20	91	45	1.25	M8/M10
895.401.050	8712993164066	50	20	97	48	1.25	M8/M10
895.401.075	8712993164103	75	20	125	62	1.5	M8/M10
895.401.110	8712993164141	110	23	164	81	2	M8/M10
895.401.125	8712993164158	125	23	181	89	2	M8/M10
895.401.160	8712993164172	160	23	209	102	2	M8/M10
895.401.200	8712993554386	200	25	269	133	2.5	M8/M10
895.401.250	5705499128086	250	38	345	163	4	M16
895.401.315	5705499135312	315	48	414	198	5	M16

PIPE HANGER WITH EPDM RUBBER TYPE 895.402

IN GALVANIZED STEEL

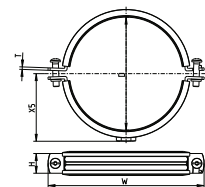


Type no.	EAN no.	D	H.	H5	W
895.402.075	5705499128109	75	25	83-96	154
895.402.110	5705499128116	110	25	100-110	176
895.402.125	5705499128123	125	25	108-118	199
895.402.160	5705499128130	160	25	127-137	234
895.402.200	5705499128147	200	25	152-162	274

Reducing noise transmission to the building.
D=75mm fits D=82mm as well.

PIPE HANGER WITH EPDM RUBBER TYPE 895.403

IN STAINLESS STEEL

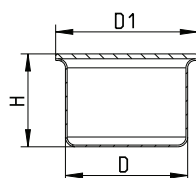


Type no.	EAN no.	D	H.	W	X5	T	Nut
895.403.040 S	5705499413168	40	20	87	35	1.25	M8
895.403.050 S	5705499128161	50	20	96	39	1.25	M8
895.403.075 S	5705499128178	75	20	118	51	2	M8
895.403.110 S	5705499128185	110	20	158	72	2.5	M10
895.403.125 S	5705499128192	125	20	170	78	2.5	M10
895.403.160 S	5705499128208	160	25	233	101	2.5	M10
895.403.200 S	5705499128215	200	25	273	120	2.5	M10
895.403.250 S	5705499128222	250	25	317	142	2.5	M10

D=75mm fits D=82mm as well.

Plugs

SOCKET PLUG TYPE 844.000



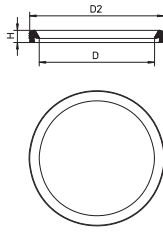
Type no.	EAN no.	D	D1	H.
844.000.040 S	5705499413175	40	50	47
844.000.050 S	5705499402933	50	58	38
844.000.075 S	5705499402940	75	85	45
844.000.110 S	5705499402957	110	120	45
844.000.125 S	5705499412222	125	135	43
844.000.160 S	5705499402964	160	170	43
844.000.200 S	5705499412239	200	210	50
844.000.250 S	5705499123654	250	265	65
844.000.315 S	5705499413922	315	335	82

Use of pipe joint clamp type 847 is necessary if any pressure in the pipe system is expected.

Sealing rings

EPDM LIP SEALING RING BLACK TYPE 801

FOR STANDARD USE



Type no.	EAN no.	D	H	D2
801.EPDM.032	5705499403923	32	6.0	39.5
801.EPDM.040	5705499403930	40	7.8	51.7
801.EPDM.050	5705499400038	50	7.8	61.8
801.EPDM.075	5705499400045	75	7.8	87.1
801.EPDM.082	5705499123524	82	8.0	93
801.EPDM.110	5705499400069	110	8.9	124.2
801.EPDM.125	5705499408096	125	10.2	142.3
801.EPDM.160	5705499400076	160	11.5	180.1
801.EPDM.200	5705499410785	200	12.8	223.8
801.EPDM.250	5705499121704	250	19	282
801.EPDM.315	5705499413700	315	20	350

MANUAL PIPE CUTTER

Cutting is done by a special disc cutter, which cuts and grips at the same time.

N.B.: Do not cut fittings.



Type no.	EAN no.	Designation
006.050.110	5705499000061	Manual pipe cutter (40 - 110 mm)
006.125.200	5705499001020	Manual pipe cutter (110 - 200 mm)
006.200.315	5705499123531	Manual pipe cutter (200 - 315 mm)
006.000.005	5705499000023	Spindle for 006.050.110
006.000.000	5705499000016	Cutting disc for 006.050.110
006.000.001	5705499001068	Cutting disc for 006.125.200 & 006.200.315

ELECTRICAL PIPE CUTTER

Cutting time:
Seconds.

Changeover time:
Changeover from one cutting disc to another can be effected within a matter of seconds.

Cutting quality:
The cutting motion has been developed to produce a bevelled leading edge to cut ends. As a result only the application of BLÜCHER jointing lubricant is required prior to jointing cut ends.

Power supply:
110 Volt/Min 2 kVA/60 Hz or 220 Volt/50 Hz.

Pipe diametres:
50-160 mm

N.B.: Do not cut fittings.



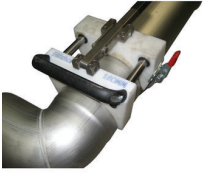
Type no.	EAN no.	Designation
800.050.160	5705499400021	Electrical pipe cutter 220 V
800.050.160 GB	5705499000184	Electrical pipe cutter 110 V, 16 A
800.050.160 US	5705499000191	Electrical pipe cutter 110 V, USA plug
800.030.006	5705499400014	Cutting disc
006.050.160	5705499124132	Support base for electrical pipe cutter

CUTTING OIL/JOINTING LUBRICANT

Jointing lubricant is applied to make jointing a simple action. After a few days the lubricant will dry out and lose its lubricity making subsequent demounting of a joint difficult. If subsequent demounting of joints can be envisaged then we can supply a silicone based lubricant that will not dry out. BLÜCHER jointing lubricant is based on a mild and harmless liquid detergent that is biologically degradable. BLÜCHER cutting oil is recommended for use with BLÜCHER® EuroPipe pipe cutters.



Type no.	EAN no.	Designation
007.000.000	5705499000078	Atomizer
007.100.050	5705499000085	Jointing lubricant 0.5 L
007.500.050	5705499000092	Cutting oil 0.5 L

ASSEMBLY TOOL

Type no.	EAN no.	Designation
806.000.160	5705499124149	For pipes D=160mm
806.000.200	5705499123500	For pipes D=200mm
806.000.250	5705499124156	For pipes D=250mm

DIMPLING JAWS

FOR PRESSING PROJECTIONS ON PIPES

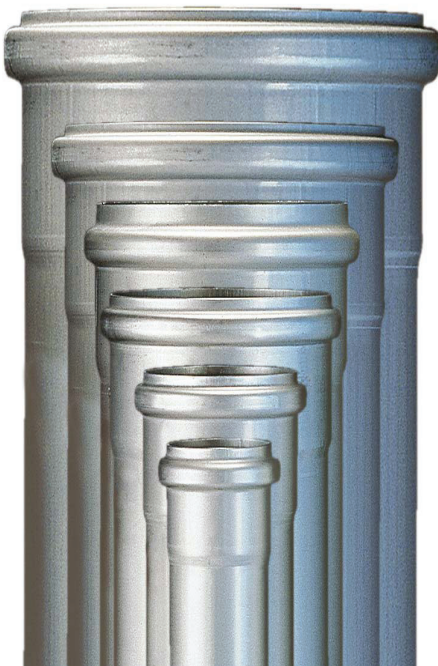


Type no.	EAN no.
800.200.001	5705499403978

BLÜCHER® EUROPIPE - FLOW TABLES

Introduction

This technical sheet provides information relating to the performance of the BLÜCHER® EuroPipe and refers to commonly used design standards and calculation methods when providing the data shown within the tables. This information may be referred to for design purposes but should not replace a detailed design approach for any drainage system.



Flow Tables

The below tables are based on the Colebrook-White equation with tables showing hydraulic flow data at fill levels of 50%, 75%, and 100%. Discharge (Q) is identified in litres per second (l/s).

Velocities (V) are in metres/second (0.76 m/s is regarded as the minimum for self-cleansing in foul sewers whereas peak flow rate should not exceed 1.5 m/s.)

Pipe Sizing

Internal Soil Waste and Rainwater pipes should be sized in accordance with the requirements of EN 12056 - Gravity drainage systems inside buildings.

External Below Ground Foul and Storm Drains should be sized in accordance with the requirements of EN 752 - Drain and sewer systems outside buildings.

BLÜCHER® EUROPIPE - STORMWATER (RAINWATER) HORIZONTAL PIPEWORK

Stainless Steel pipes are hydraulically smooth (Ks value 0.003mm) and are less susceptible to scaling than other pipe materials e.g. cast iron. Pipe manufacturers often claim very low roughness coefficient values (ks) but for design purposes 0.6mm for Stormwater drainage and 1.5mm for Foul drainage are recommended in EN 752 and should be used.

EN 752 further recommends that where surface water drains remain clean, unsoiled and in good condition throughout their design life, the roughness will depend principally on the pipe material. In such cases, recommended pipe roughness values (ks) can be obtained from H R Wallingford Tables for Hydraulic design of pipes.

50%

HYDRAULIC FLOW DATA - Roughness Ks = 0,6mm (0,0006m)

Grade	Gradient		DN 50 di=48mm 0,048		DN 70 di=73mm 0,073		DN 90 di=80mm 0,08		DN 100 di=108mm 0,108		DN 125 di=123mm 0,123		DN 150 di=157.5mm 0,1575		DN 200 di=197mm 0,197		DN 250 di=247mm 0,247		DN 300 di=311mm 0,311		
	mm/m	cm/m	Q	v	Q	v	Q	v	Q	v	Q	v	Q	v	Q	v	Q	v	Q	v	Q
1:500	2	0,20												5,4	0,6	8,0	0,5	14,6	0,6	26,9	0,7
1:300	3	0,30												9,9	0,6	18,0	0,8	33,1	0,9	57,8	1,0
1:250	4	0,40										3,3	0,5	6,3	0,6	11,4	0,8	20,8	0,9	38,3	1,0
1:200	5	0,50								2,6	0,6	3,7	0,6	7,1	0,7	12,8	0,8	23,3	1,0	42,9	1,1
1:160	6	0,60			1,0	0,5	1,3	0,5	2,8	0,6	4,0	0,7	7,8	0,8	14,1	0,9	25,6	1,1	47,0	1,2	
1:140	7	0,70	0,3	0,4	1,1	0,5	1,4	0,5	3,1	0,7	4,3	0,7	8,4	0,9	15,2	1,0	27,7	1,2	50,9	1,3	
1:120	8	0,80	0,4	0,4	1,2	0,6	1,5	0,6	3,3	0,7	4,7	0,8	9,0	0,9	16,3	1,1	29,6	1,2	54,4	1,4	
1:110	9	0,90	0,4	0,4	1,2	0,6	1,6	0,6	3,5	0,8	4,9	0,8	9,5	1,0	17,3	1,1	31,4	1,3	57,8	1,5	
1:100	10	1,00	0,4	0,5	1,3	0,6	1,7	0,7	3,7	0,8	5,2	0,9	10,1	1,0	18,2	1,2	33,1	1,4	60,9	1,6	
1:90	11	1,10	0,4	0,5	1,4	0,6	1,7	0,7	3,9	0,8	5,5	0,9	10,6	1,1	19,1	1,3	34,8	1,5	63,9	1,7	
1:85	12	1,20	0,5	0,5	1,4	0,7	1,8	0,7	4,0	0,9	5,7	1,0	11,0	1,1	20,0	1,3	36,3	1,5	66,8	1,8	
1:75	13	1,30	0,5	0,5	1,5	0,7	1,9	0,8	4,2	0,9	6,0	1,0	11,5	1,2	20,8	1,4	37,8	1,6	69,5	1,8	
1:70	14	1,40	0,5	0,6	1,5	0,7	2,0	0,8	4,4	1,0	6,2	1,0	11,9	1,2	21,6	1,4	39,3	1,6	72,2	1,9	
1:65	15	1,50	0,5	0,6	1,6	0,8	2,0	0,8	4,5	1,0	6,4	1,1	12,4	1,3	22,4	1,5	40,7	1,7	74,7	2,0	
1:50	20	2,00	0,6	0,7	1,8	0,9	2,4	0,9	5,2	1,1	7,4	1,2	14,3	1,5	25,9	1,7	47,0	2,0	86,4	2,3	
1:40	25	2,50	0,7	0,7	2,1	1,0	2,6	1,0	5,9	1,3	8,3	1,4	16,0	1,6	28,9	1,9	52,6	2,2	96,7	2,5	
1:30	30	3,00	0,7	0,8	2,3	1,1	2,9	1,2	6,4	1,4	9,1	1,5	17,5	1,8	31,7	2,1	57,7	2,4	106,0	2,8	
1:28	35	3,50	0,8	0,9	2,4	1,2	3,1	1,2	7,0	1,5	9,8	1,7	19,0	1,9	34,3	2,3	62,4	2,6	114,5	3,0	
1:25	40	4,00	0,9	0,9	2,6	1,3	3,3	1,3	7,4	1,6	10,5	1,8	20,3	2,1	36,7	2,4	66,7	2,8	122,5	3,2	
1:22	45	4,50	0,9	1,0	2,8	1,3	3,6	1,4	7,9	1,7	11,2	1,9	21,5	2,2	38,9	2,6	70,8	3,0	129,9	3,4	
1:20	50	5,00	1,0	1,1	2,9	1,4	3,7	1,5	8,3	1,8	11,8	2,0	22,7	2,3	41,0	2,7	74,6	3,1	137,0	3,6	

75%

HYDRAULIC FLOW DATA - Roughness Ks = 0,6mm (0,0006m)

Grade	Gradient		DN 50 di=48mm 0,048		DN 70 di=73mm 0,073		DN 90 di=80mm 0,08		DN 100 di=108mm 0,108		DN 125 di=123mm 0,123		DN 150 di=157.5mm 0,1575		DN 200 di=197mm 0,197		DN 250 di=247mm 0,247		DN 300 di=311mm 0,311		
	mm/m	cm/m	Q	v	Q	v	Q	v	Q	v	Q	v	Q	v	Q	v	Q	v	Q	v	Q
1:500	2	0,20											7,4	0,5	13,4	0,6	24,4	0,7	44,9	0,8	
1:300	3	0,30										4,7	0,5	9,1	0,6	16,5	0,7	30,0	0,8	55,2	1,0
1:250	4	0,40								3,8	0,6	5,4	0,6	10,5	0,7	19,1	0,8	34,7	1,0	63,9	1,1
1:200	5	0,50			1,5	0,5	1,9	0,5	4,3	0,6	6,1	0,7	11,8	0,8	21,4	0,9	38,9	1,1	71,5	1,3	
1:160	6	0,60	0,5	0,4	1,7	0,5	2,1	0,6	4,7	0,7	6,7	0,8	12,9	0,9	23,4	1,0	42,7	1,2	78,5	1,4	
1:140	7	0,70	0,6	0,4	1,8	0,6	2,3	0,6	5,1	0,7	7,3	0,8	14,0	1,0	25,4	1,1	46,2	1,3	84,8	1,5	
1:120	8	0,80	0,6	0,5	1,9	0,6	2,5	0,7	5,5	0,8	7,8	0,9	15,0	1,0	27,1	1,2	49,4	1,4	90,8	1,6	
1:110	9	0,90	0,7	0,5	2,0	0,7	2,6	0,7	5,8	0,8	8,2	0,9	15,9	1,1	28,8	1,3	52,4	1,5	96,3	1,7	
1:100	10	1,00	0,7	0,5	2,2	0,7	2,8	0,7	6,2	0,9	8,7	1,0	16,8	1,1	30,4	1,3	55,3	1,5	101,6	1,8	
1:90	11	1,10	0,7	0,5	2,3	0,7	2,9	0,8	6,5	0,9	9,1	1,0	17,6	1,2	31,9	1,4	58,0	1,6	106,6	1,9	
1:85	12	1,20	0,8	0,6	2,4	0,8	3,0	0,8	6,7	1,0	9,5	1,1	18,4	1,3	33,3	1,5	60,6	1,7	111,4	2,0	
1:75	13	1,30	0,8	0,6	2,5	0,8	3,2	0,8	7,0	1,0	9,9	1,1	19,2	1,3	34,7	1,5	63,1	1,8	116,0	2,0	
1:70	14	1,40	0,8	0,6	2,6	0,8	3,3	0,9	7,3	1,1	10,3	1,2	19,9	1,4	36,0	1,6	65,5	1,8	120,4	2,1	
1:65	15	1,50	0,9	0,6	2,7	0,8	3,4	0,9	7,6	1,1	10,7	1,2	20,6	1,4	37,3	1,6	67,9	1,9	124,7	2,2	
1:50	20	2,00	1,0	0,7	3,1	1,0	3,9	1,0	8,7	1,3	12,4	1,4	23,8	1,6	43,1	1,9	78,5	2,2	144,1	2,5	
1:40	25	2,50	1,1	0,8	3,4	1,1	4,4	1,2	9,8	1,4	13,8	1,6	26,7	1,8	48,3	2,1	87,8	2,4	161,3	2,8	
1:30	30	3,00	1,2	0,9	3,8	1,2	4,8	1,3	10,7	1,6	15,2	1,7	29,3	2,0	52,9	2,3	96,2	2,7	176,7	3,1	
1:28	35	3,50	1,3	1,0	4,1	1,3	5,2	1,4	11,6	1,7	16,4	1,8	31,6	2,2	57,2	2,5	104,0	2,9	191,0	3,4	
1:25	40	4,00	1,4	1,0	4,4	1,4	5,6	1,5	12,4	1,8	17,6	2,0	33,8	2,3	61,2	2,7	111,2	3,1	204,3	3,6	
1:22	45	4,50	1,5	1,1	4,6	1,5	5,9	1,6	13,2	1,9	18,6	2,1	35,9	2,5	64,9	2,8	118,0	3,3	216,7	3,8	
1:20	50	5,00	1,6	1,2	4,9	1,6	6,3	1,7	13,9	2,0	19,6	2,2	37,9	2,6			124,4	3,5	228,5	4,0	

Recommended velocities shown within boxed sections of the table

BLÜCHER® EUROPIPE - FOUL WASTE WATER HORIZONTAL PIPEWORK

HYDRAULIC FLOW DATA - Roughness Ks = 1,5mm (0,0015m)

Grade	mm/m	Gradient		DN 50 di=48mm 0,048		DN 70 di=73mm 0,073		DN 90 di=80mm 0,08		DN 100 di=108mm 0,108		DN 125 di=123mm 0,123		DN 150 di=157.5mm 0,1575		DN 200 di=197mm 0,197		DN 250 di=247mm 0,247		DN 300 di=311mm 0,311	
		J	Q	v	Q	v	Q	v	Q	v	Q	v	Q	v	Q	v	Q	v	Q	v	Q
1:500	2	0.20														7,1	0,5	13,0	0,5	23,9	0,6
1:300	3	0.30												4,8	0,5	8,7	0,6	15,9	0,7	29,4	0,8
1:250	4	0.40										2,9	0,5	5,5	0,6	10,1	0,7	18,4	0,8	34,0	0,9
1:200	5	0.50								2,3	0,5	3,2	0,5	6,2	0,6	11,3	0,7	20,6	0,9	38,0	1,0
1:160	6	0.60			0,9	0,4	1,1	0,4	2,5	0,5	3,5	0,6	6,8	0,7	12,4	0,8	22,6	0,9	41,6	1,1	
1:140	7	0.70	0,3	0,3	0,9	0,4	1,2	0,5	2,7	0,6	3,8	0,6	7,3	0,8	13,4	0,9	24,4	1,0	45,0	1,2	
1:120	8	0.80	0,3	0,4	1,0	0,5	1,3	0,5	2,9	0,6	4,1	0,7	7,9	0,8	14,3	0,9	26,1	1,1	48,1	1,3	
1:110	9	0.90	0,3	0,4	1,1	0,5	1,4	0,5	3,0	0,7	4,3	0,7	8,3	0,9	15,2	1,0	27,7	1,2	51,1	1,3	
1:100	10	1.00	0,4	0,4	1,1	0,5	1,4	0,6	3,2	0,7	4,5	0,8	8,8	0,9	16,0	1,0	29,2	1,2	53,8	1,4	
1:90	11	1.10	0,4	0,4	1,2	0,6	1,5	0,6	3,4	0,7	4,8	0,8	9,2	0,9	16,8	1,1	30,6	1,3	56,5	1,5	
1:85	12	1.20	0,4	0,4	1,2	0,6	1,6	0,6	3,5	0,8	5,0	0,8	9,6	1,0	17,5	1,1	32,0	1,3	59,0	1,6	
1:75	13	1.30	0,4	0,5	1,3	0,6	1,6	0,6	3,7	0,8	5,2	0,9	10,0	1,0	18,2	1,2	33,3	1,4	61,4	1,6	
1:70	14	1.40	0,4	0,5	1,3	0,6	1,7	0,7	3,8	0,8	5,4	0,9	10,4	1,1	18,9	1,2	34,6	1,4	63,7	1,7	
1:65	15	1.50	0,4	0,5	1,4	0,7	1,8	0,7	3,9	0,9	5,6	0,9	10,8	1,1	19,6	1,3	35,8	1,5	66,0	1,7	
1:50	20	2.00	0,5	0,6	1,6	0,8	2,0	0,8	4,5	1,0	6,4	1,1	12,5	1,3	22,6	1,5	41,3	1,7	76,2	2,0	
1:40	25	2.50	0,6	0,6	1,8	0,8	2,3	0,9	5,1	1,1	7,2	1,2	13,9	1,4	25,3	1,7	46,2	1,9	85,3	2,2	
1:30	30	3.00	0,6	0,7	1,9	0,9	2,5	1,0	5,6	1,2	7,9	1,3	15,3	1,6	27,8	1,8	50,7	2,1	93,4	2,5	
1:28	35	3.50	0,7	0,7	2,1	1,0	2,7	1,1	6,0	1,3	8,5	1,4	16,5	1,7	30,0	2,0	54,8	2,3	100,9	2,7	
1:25	40	4.00	0,7	0,8	2,2	1,1	2,9	1,1	6,4	1,4	9,1	1,5	17,7	1,8	32,1	2,1	58,5	2,4	107,9	2,8	
1:22	45	4.50	0,8	0,8	2,4	1,1	3,0	1,2	6,8	1,5	9,7	1,6	18,7	1,9	34,0	2,2	62,1	2,6	114,5	3,0	
1:20	50	5.00	0,8	0,9	2,5	1,2	3,2	1,3	7,2	1,6	10,2	1,7	19,7	2,0	35,9	2,4	65,5	2,7	120,7	3,2	



HYDRAULIC FLOW DATA - Roughness Ks = 1,5mm (0,0015m)

Grade	mm/m	Gradient		DN 50 di=48mm 0,048		DN 70 di=73mm 0,073		DN 90 di=80mm 0,08		DN 100 di=108mm 0,108		DN 125 di=123mm 0,123		DN 150 di=157.5mm 0,1575		DN 200 di=197mm 0,197		DN 250 di=247mm 0,247		DN 300 di=311mm 0,311	
		J	Q	v	Q	v	Q	v	Q	v	Q	v	Q	v	Q	v	Q	v	Q	v	Q
1:500	2	0.20												6,5	0,4	11,8	0,5	21,6	0,6	39,9	0,7
1:300	3	0.30										4,1	0,5	8,0	0,5	14,5	0,6	26,5	0,7	49,0	0,9
1:250	4	0.40							3,4	0,5	4,8	0,5	9,2	0,6	16,8	0,7	30,7	0,9	56,6	1,0	
1:200	5	0.50			1,3	0,4	1,7	0,4	3,8	0,5	5,3	0,6	10,3	0,7	18,8	0,8	34,3	1,0	63,4	1,1	
1:160	6	0.60	0,5	0,3	1,4	0,5	1,8	0,5	4,1	0,6	5,8	0,7	11,3	0,8	20,6	0,9	37,7	1,0	69,5	1,2	
1:140	7	0.70	0,5	0,4	1,6	0,5	2,0	0,5	4,5	0,6	6,3	0,7	12,3	0,8	22,3	1,0	40,7	1,1	75,1	1,3	
1:120	8	0.80	0,5	0,4	1,7	0,5	2,1	0,6	4,8	0,7	6,8	0,8	13,1	0,9	23,8	1,0	43,5	1,2	80,3	1,4	
1:110	9	0.90	0,6	0,4	1,8	0,6	2,3	0,6	5,1	0,7	7,2	0,8	13,9	1,0	25,3	1,1	46,2	1,3	85,2	1,5	
1:100	10	1.00	0,6	0,4	1,9	0,6	2,4	0,6	5,3	0,8	7,6	0,8	14,7	1,0	26,7	1,2	48,7	1,4	89,8	1,6	
1:90	11	1.10	0,6	0,5	2,0	0,6	2,5	0,7	5,6	0,8	7,9	0,9	15,4	1,1	28,0	1,2	51,1	1,4	94,2	1,7	
1:85	12	1.20	0,7	0,5	2,0	0,6	2,6	0,7	5,9	0,9	8,3	0,9	16,1	1,1	29,2	1,3	53,4	1,5	98,4	1,7	
1:75	13	1.30	0,7	0,5	2,1	0,7	2,7	0,7	6,1	0,9	8,6	1,0	16,7	1,1	30,4	1,3	55,6	1,5	102,4	1,8	
1:70	14	1.40	0,7	0,5	2,2	0,7	2,8	0,7	6,3	0,9	9,0	1,0	17,4	1,2	31,6	1,4	57,7	1,6	106,3	1,9	
1:65	15	1.50	0,7	0,5	2,3	0,7	2,9	0,8	6,6	1,0	9,3	1,0	18,0	1,2	32,7	1,4	59,7	1,7	110,1	1,9	
1:50	20	2.00	0,8	0,6	2,6	0,8	3,4	0,9	7,6	1,1	10,7	1,2	20,8	1,4	37,8	1,7	69,0	1,9	127,2	2,2	
1:40	25	2.50	0,9	0,7	3,0	0,9	3,8	1,0	8,5	1,2	12,0	1,3	23,3	1,6	42,3	1,8	77,1	2,1	142,2	2,5	
1:30	30	3.00	1,0	0,8	3,2	1,0	4,1	1,1	9,3	1,4	13,2	1,5	25,5	1,7	46,3	2,0	84,5	2,4	155,8	2,7	
1:28	35	3.50	1,1	0,8	3,5	1,1	4,5	1,2	10,0	1,5	14,2	1,6	27,5	1,9	50,0	2,2	91,3	2,5	168,4	3,0	
1:25	40	4.00	1,2	0,9	3,7	1,2	4,8	1,3	10,7	1,6	15,2	1,7	29,5	2,0	53,5	2,3	97,6	2,7	180,0	3,2	
1:22	45	4.50	1,3	0,9	4,0	1,3	5,1	1,3	11,4	1,7	16,1	1,8	31,2	2,1	56,7	2,5	103,6	2,9	191,0	3,4	
1:20	50	5.00	1,3	1,0	4,2	1,3	5,4	1,4	12,0	1,7	17,0	1,9	32,9	2,3			109,2	3,0	201,3	3,5	



Recommended velocities shown within boxed sections of the table

BLÜCHER® EUROPIPE VERTICAL (NON-SIPHONIC PIPEWORK)

The below table shows vertical circular rainwater pipe sizes and their capacity as referenced in EN 12056-3. This table includes BLÜCHER® EuroPipe sizes and aligns these sizes with their equivalent nominal sizes (DN) listed in EN 12056-3.

A filling degree of 0.33 should be used unless otherwise stipulated in local regulations/legislations.

DN	BLÜCHER				EN 12056		
	OD	ID	Capacity (l/s)		ID	Capacity (l/s)	
			Filling degree 0,2	Filling degree 0,33		Filling degree 0,2	Filling degree 0,33
40	40	38	0,4	0,8			
50	50	48	0,7	1,7	50	0,7	1,7
80	75	73	2,1	4,6	75	2,2	5,0
90	82	80	2,6	5,9	80	2,8	5,9
100	110	108	5,7	13,2	100	4,6	10,7
125	125	123	7,6	17,4	120	7,6	17,4
150	160	157,5	15,6	36,0	150	13,7	31,6
200	200	197	28,4	65,3	200	29,5	68,0
250	250	247	51,8	119,5	240	48,0	110,6
300	315	311	95,8	220,8	300	87,1	200,6

Kb value = 0,25 mm



“The BLÜCHER® rainwater range is easily connected to the BLÜCHER® EuroPipe pipework system - offering you a safe and complete rainwater drainage system“.

BLÜCHER® EuroPipe

BLÜCHER® Channel

BLÜCHER® Drain

BLÜCHER® Roof

BLÜCHER offers you a comprehensive range of rainwater products



GRAVITY
ROOF



GREEN
ROOF



BLUE
ROOF



SIPHONIC
ROOF



INTELLIGENT
ROOF



PARAPET
DRAIN



EMERGENCY
DRAIN



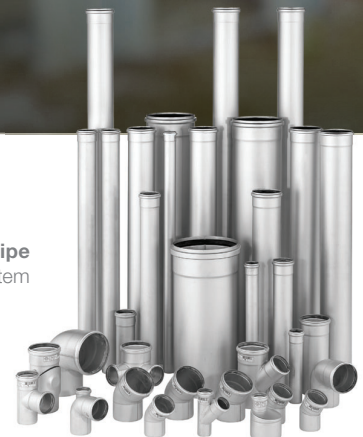
BALCONY
DRAIN



FACADE
PIPE WORK

© BLÜCHER

BLÜCHER® EuroPipe
stainless steel drainage pipework system



BLÜCHER®

A **WATTS Brand**

T: +45 99 92 08 00 • blucher.com

© 2023 blucher.com