



“As we know BLÜCHER stainless steel sanitary drainage systems from previous projects, we knew it would be a perfect fit for this luxury super yacht, so we asked them to make an offer for this project.”

*Ivo Skelin, General Manager
Design and Development River
Cruise Projects Scenic Group*



Emerald Azzurra, Vietnam

Case story: Complete Sanitary Drainage System for both Grey- and Black Water for a Luxury Super Yacht-like Passenger Cruise Ship

What the client needed

The vessel is intended to be a modern yacht-like passenger cruise ship, designed and classed to operate worldwide without limitations on international voyages. Custom-designed to allow unique access to the fascinating ports and harbors only small ships can reach.

In the design, topics like passenger safety onboard and to be environmentally friendly have been in focus and products in re-cyclable stainless steel are ideal solutions to meet these demands.

Solution

Emerald Cruises has got a reliable and strong solution from

BLÜCHER including a complete sanitary drainage system with push-fit pipes for both black water (vacuum solution) and grey water (gravity flow) systems. Furthermore, BLÜCHER will deliver all galley channels for the vessels. All solutions are made in AISI 316L stainless steel.

Result (ROI)

Emerald Cruises has focused on getting a safe and sustainable solution, and this is what BLÜCHER has delivered. With stainless steel pipes you eliminate the risk of transfer of a fire, development of smoke and toxic gasses. In case of a fire the use of a non-combustible material will prevent melting and burning droplets like other

alternative choice of material can cause.

Stainless steel products add value and longevity to vessels like these.

Alternative materials can be much heavier than stainless steel. BLÜCHER lightweight push-fit system is the ideal choice for shipyards, as the low weight and flexibility provide the yards with a much easier and fast installation time, which reduces the installation costs significantly.

During the design, enormous effort was done to create yacht looking ship that would provide special, intimate, yacht experience to the guests. Having such sleek yacht looking design, passenger number is limited to only 100 passengers in 50 cabins and suites.

The vessel Emerald Azurra inaugural date is set for January 2022.

“Through commercial discussions and super professional working relationship with the Scenic team, we are very happy to land this order and be a part of this prestigious project, where we have delivered full drainage system for both black and grey water systems and galley channels.”

*Jens Lindinger,
Area Sales Manager,
BLÜCHER*

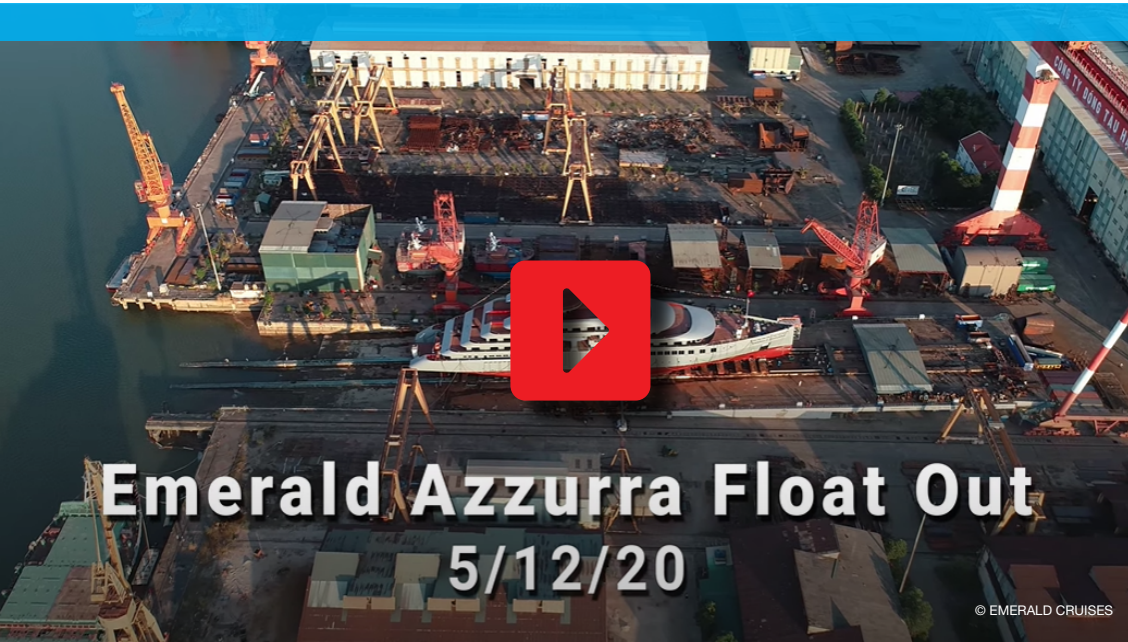
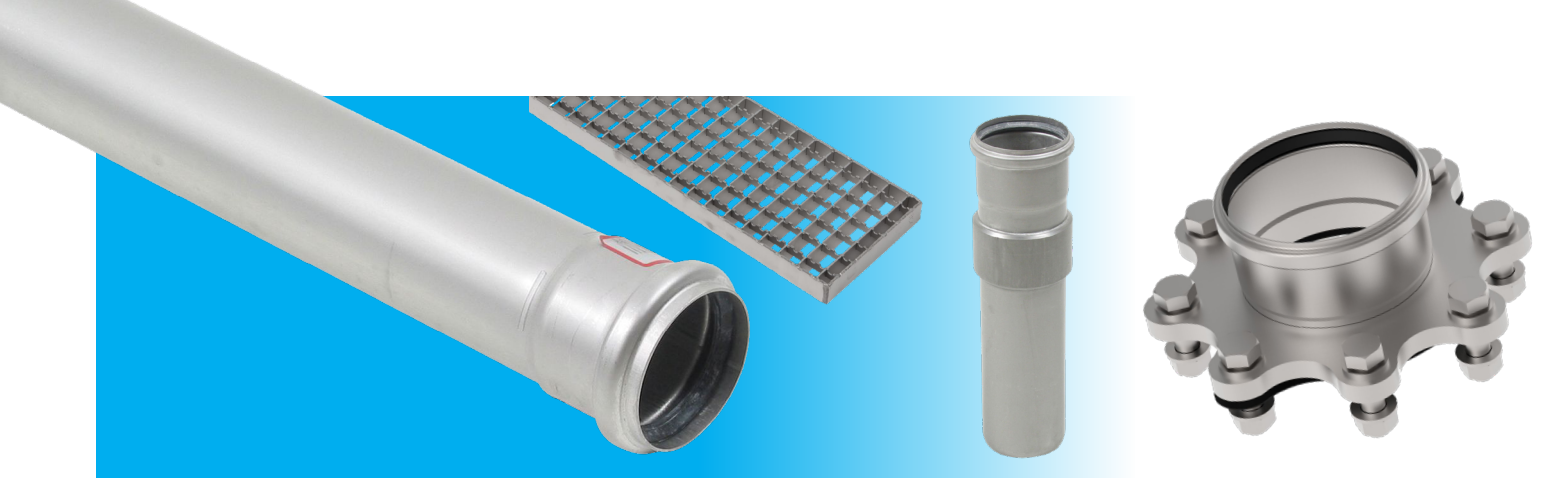


FACTS

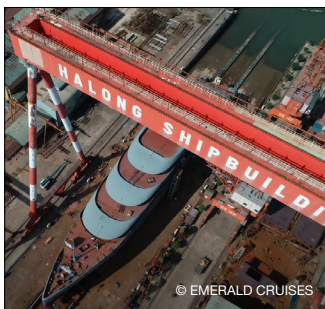
Customer: Emerald Cruises
Location: Halong Shipyard, Halong City, Vietnam
Industry: Marine
Vessel Type: Passenger Ship
Product (s) Installed: BLÜCHER® EuroPipe & BLÜCHER® Channels

BLÜCHER®

A WATTS Brand



Name: Emerald Azzurra
Vessel type: Passenger ship
To be built at Yard: Halong Shipyard, Halong City, Vietnam
Flag / Port of Reg.: Malta, Valetta
Length overall: 110.00 m
Breadth: 16.00 m
Gross register tonnage: 5175,5 GRT
Speed: 16 knots
Crew capacity: 64
Pax cabins/suites: 50 cabins/suites for 100 passengers



Further information:
www.blucher-marine.com



BLÜCHER[®]

A WATTS Brand